



December 2, 2022

Re: State Environmental Quality Review Act Update for Current Proposed Development at the Western New York Science & Technology Advanced Manufacturing Park

Dear Interested or Involved Agency:

As you know, the Genesee County Industrial Development Agency d/b/a the Genesee County Economic Development Center ("**GCEDC**"), in conjunction with the Genesee Gateway Local Development Corporation ("**GGLDC**"), the non-profit real estate affiliate of the GCEDC, have been working for almost fifteen years on the development of the Western New York Science & Technology Advanced Manufacturing Park ("**STAMP**" or the "**Project**"), an advanced manufacturing technology campus on approximately 1,262 acres located on the west side of New York State Route 63/77, approximately five miles north of the I-90/New York State Thruway ("**STAMP Site**") in the Town of Alabama, New York ("**Town**").

In connection with the Project, by letter dated September 30, 2022, the GCEDC circulated a notice of intent to re-establish itself as lead agency for STAMP ("**Notice**") pursuant to the State Environmental Quality Review Act ("**SEQR**") in conjunction with the Scannell Development project which involves the development of approximately 22.76 acres of a 87.7-acre site located within the STAMP Site at 6840 Crosby Road (SBL: 10.-1-43.12; 10.-1-39.-11; 10.-1-39.12) and the construction of up to three distribution and/or manufacturing buildings for commercial and/or industrial purposes. No interested or involved agency objected within 30 days to the re-establishment of the GCEDC as lead agency and thus, the GCEDC has properly been re-established as the lead agency for STAMP.

Since the circulation of the Notice in late September, 2022, Edwards Vacuum LLC ("**Edwards Vacuum**") has selected the STAMP Site for the location of its proposed 255,000 sq. ft. machining and assembly hall together with office building space. In a future phase, it is anticipated that Edwards Vacuum will construct a 255,000 sq. ft. addition to its proposed development. This project will be developed on approximately 80 acres of land east of Crosby Road and North of STAMP Drive. In addition, GCEDC is considering a number of additional infrastructure projects at STAMP.

The GCEDC, as lead agency, is obligated to evaluate all of these projects pursuant to SEQR. Thus, the GCEDC is now providing an updated description of current proposed development at STAMP for purposes of evaluating these developments pursuant to SEQR (hereinafter, “**Current Proposed STAMP Development**”). See **Exhibit A**. GCEDC, as lead agency for STAMP, is distributing copies of the following exhibits to all interested and involved agencies:

<u>Exhibit</u>	<u>Description</u>
Exhibit A:	Description of Current Proposed STAMP Development
Exhibit B:	Full Environmental Assessment Form - Edwards Vacuum
Exhibit C:	Full Environmental Assessment Form - Scannell Properties
Exhibit D:	Full Environmental Assessment Form - Additional Onsite Infrastructure
Exhibit E-F:	Project Maps

As you know, the GCEDC first analyzed the environmental impacts of the development of STAMP, as lead agency pursuant to SEQR, in a process culminating with a Final Generic Environmental Impact Statement (“**GEIS**”) issued on January 19, 2012. A written Findings Statement (“**GCEDC Findings**”) was issued on March 12, 2012. In June 2016, and August 2019, SEQR updates were conducted to analyze various changes to the Project following issuance of the GCEDC Findings (“**2016 Modifications**” and “**2019 Modifications**”). The GCEDC, as lead agency, issued written amended findings statements on July 14, 2016 (“**2016 GCEDC Findings**”) and a SEQR update on August 6, 2020 (“**2020 SEQRA Update**”). In February 2021, a SEQRA update was conducted to evaluate the addition of Plug Power, a hydro-powered electrolysis hydrogen production facility, as the first private tenant of the STAMP Site and concluded that the same was consistent with the GEIS (“**2021 SEQRA Update**”). Following the 2021 SEQRA Update, GCEDC conducted additional SEQRA analysis in 2022 to evaluate new environmental information relating to the construction of the STAMP wastewater treatment facility, force main, substation, and powerline reroute and issued a negative declaration for the same in July of 2022 (“**2022 Negative Declaration**”). GCEDC amended the negative declaration in August of 2022 to address concerns raised by the Tonawanda Seneca Nation (“**2022 First Amended Negative Declaration**”) and again in October of 2022 to address changes in construction timing for the powerline reroute (“**2022 Second Amended Negative Declaration**”) (collectively, the GEIS as amended and updated, together with the negative declarations, are referred to as the “**STAMP GEIS**”).

The GCEDC will now evaluate the Current Proposed STAMP Development including the Scannell project, the Edwards Vacuum project, and the additional contemplated infrastructure projects, to determine whether the potential adverse environmental impacts associated with the Current Proposed STAMP Development are adequately

addressed in the STAMP GEIS and, if not, whether the Current Proposed STAMP Development will result in any potential significant adverse environmental impacts. The GCEDC encourages all interested and involved agencies to review the attached documentation and provide any comments, questions or concerns relative to the potential adverse environmental impacts of the Current Proposed STAMP Development to Mark Masse, Senior Vice President of Operations for GCEDC, by email at [mmasse@gcedc.com](mailto:mmasse@gcedc.com) or by telephone at (585) 343-2166, ext. 17.

Sincerely,

Genesee County Economic Development Center

By:

A handwritten signature in blue ink, appearing to read 'M. Masse', written over a light blue horizontal line.

Mark A. Masse, CPA  
Senior Vice President of Operations

cc: Adam Walters, Esq.

# Exhibit A

The Current Proposed STAMP Development include all actions necessary to undertake the following:

**Edwards Vacuum LLC:**

Edwards Vacuum LLC (“**Edwards Vacuum**”) has selected the STAMP Site for the location of its proposed approximately 255,000 sq. ft. machining and assembly hall, together with onsite office building space. Edwards Vacuum is a leading supplier of vacuum and abatement products, services and solutions for the global semiconductor industry. Edwards Vacuum will construct and operate the new facility to align with the LEED green building certification system, and will be powered using 100% renewable energy sources. In addition, the Edwards Vacuum development will enable a significant reduction in carbon emissions arising from international freight by localizing manufacturing in the US.

In a future phase, it is anticipated that Edwards Vacuum will construct an additional, approximately 255,000 sq. ft. addition to its proposed development. This project will be developed on approximately 80 acres of land east of Crosby Road and North of STAMP Drive (*See, Exhibit E*).

The Edwards Vacuum development will include the extension of the current bypass stub off of STAMP Drive and reconstruction of Crosby Road from STAMP Drive heading north to the Edwards Vacuum parcel (*See, Exhibit E*). The Edwards Vacuum development also includes the construction of a stormwater pond and the extension of a STAMP water line approximately 2,000 feet from the existing onsite water main (*See, Exhibit F*). Further, this development includes the construction of a new sanitary sewer pump station and a new 4 inch force main or 12 inch gravity sanitary sewer main approximately 2,800 linear feet in length (*See, Exhibit H*). Additionally, the Edwards Vacuum development includes new electric distribution lines to be to support the development’s electrical needs (*See, Exhibit J*). Portions of the broader STAMP Site will be utilized for staging purposes for onsite construction.

It is anticipated that the Edwards Vacuum portion of the Current Proposed STAMP Development will require the following permits/approvals/incentives:

- NYSDEC Part 182 Incidental Take Permit
- NYSDEC SPDES Permit for Construction
- NYSDEC Air Facility Permit
- Town of Alabama Planning Board Site Plan Approval
- Empire State Development Incentives
- GCEDC Incentives
- NYPA Hydropower Allocation
- CHIPS Act Incentives

- NYSDOT Consultation

### **Scannell Properties LLC:**

Scannell Properties LLC (“**Scannell**”) has selected the STAMP Site for the development of up to three distribution and/or manufacturing buildings for industrial purposes on approximately 87.7 acres of the STAMP Site. The Scannell development involves the grant of an option to purchase a portion of the STAMP Site from GCEDC to Scannell in order to enable Scannell to obtain tenants to develop the property. The Scannell development is located south of the Plug Power Site and west of Crosby Road (*See, Exhibit E*). Construction of the Scannell development, which consists of an approximate 623,000 sq. ft. building; an approximate 157,500 sq. ft. building; and a 211,000 sq. ft. building, is conceptual at this point as the Scannell Project is proposed to be a speculative build, ranging a number of possible buildings and tenants, that has not yet secured its own tenants. Final building sizes and uses will be based on future tenant needs. However, these building sizes are the maximum buildout the Scannell site can support.

In response to questions raised by NYSDEC, Scannell has confirmed that no individual furnace affiliated with Scannell’s future development is anticipated to exceed 10 million BTU/hour permitting threshold set forth in 6 N.Y.C.R.R. 201-3.2(1)(i). Accordingly, the structures will not require an air permit from NYSDEC. In addition, it is noted that the possible maximum height of the Scannell buildings (110 ft.) is consistent with the height thresholds established in the STAMP GEIS, including the zoning classification of this section of the STAMP Site.

The Scannell development includes the reconstruction of a portion of Crosby Road south of the Plug Power development (*See, Exhibit E*). In addition, the Scannell development includes the extension of a water line from the Plug Power site south along Crosby Road to the Scannell development parcels (*See, Exhibit F*). Further, this development includes the construction of a new sewer line from the future WWTF north of the Plug Power development south along Crosby Road to the Scannell development parcels (*See, Exhibit H*). Additionally, the Scannell development includes new electric distribution lines to be to support the development’s electrical needs (*See, Exhibit J*). The annual estimated electricity demand is 10 MW which will be supported by the proposed construction of a new STAMP substation. Portions of the broader STAMP Site will be utilized for staging purposes for onsite construction.

It is anticipated that the Scannell portion of the Current Proposed STAMP Development will require the following permits/approvals/incentives:

- NYSDEC Part 182 Incidental Take Permit
- NYSDEC SPDES Permit for Construction

- Town of Alabama Planning Board Site Plan Approval
- Empire State Development Incentives
- GCEDC Incentives
- NYPA Hydropower Allocation
- NYSDOT Consultation

### **Infrastructure Construction:**

The following infrastructure improvements and projects will support the above referenced projects and support development of other tenants at the STAMP Site as referenced in the map attached hereto as *Exhibit E*:

#### **Roadways**

To support Edwards Vacuum and Scannell Properties project, improvements to portions of Crosby Road will be required. This includes the widening of approximately 5,000 linear feet of Crosby Road. The widening will include 12-foot travel lanes and a 4-foot shoulder for a total road width of 32-feet, along with all necessary drainage features. A portion of Crosby Road crosses an onsite tributary to Oak Orchard Creek ("**Trib 3**"). The widening of Crosby Road will involve the replacement of the culvert crossing for Trib 3.

A portion of the proposed bypass connector road will need to be constructed to support Edwards Vacuum. This will involve the construction of approximately 500 linear feet of new roadway, with a total width of 32-feet, including all drainage features, as necessary.

This SEQR review also includes the full construction of the bypass connector road and the bypass road itself. In total, the bypass connector road is approximately 1,800 linear feet and the bypass road is approximately 4,000 linear feet in length. Both roads will be designed and constructed with a total width of 32-feet and include all necessary drainage features. (*See, Exhibit E*).

#### **Water**

##### **Genesee County Water Supply:**

Currently, the STAMP site is supplied by water from Genesee County that includes a 12-inch water main, with a maximum capacity of 1 million gallons per day (mgd). To support further development of the site, a series of (3) three, 2.0-million-gallon (mg) tanks and a pump station will be required. The Genesee County water supply will flow directly into the tanks and then be distributed to the STAMP site through a 12-inch or a 16-inch main. (*See, Exhibit F*).

### Niagara County Water Supply:

To support larger anchor tenants in the northern campus of the STAMP site, a water main will be installed from the Niagara County line to provide 6.0 mgd to the STAMP site ("**Offsite Big Water**"). GCEDC previously reviewed Offsite Big Water pursuant to SEQRA in 2020 and again in 2022, and is in the process of obtaining permits from NYSDEC for the same. Now, GCEDC is undertaking a review of the proposed onsite distribution infrastructure for the Niagara County water supply ("**Onsite Big Water**"). The onsite portion of this water main will include a 30-inch water main that will flow directly into a series of (3) three, 2.0-million-gallon (mg) tanks. A pump station will be constructed adjacent to the tanks and supply the onsite distribution network. The onsite distribution network will consist of a 16-inch or a 24-inch water main. (*See, Exhibit G*).

### Sewer

#### Onsite Sanitary Sewer Collection System:

The onsite sanitary sewer collection system ("**Onsite Sewer**") will consist of a combination of gravity sanitary sewer, pump stations and force mains to convey up to 1.0 mgd to the STAMP Onsite Wastewater Treatment Facility which will be constructed to support the above-referenced projects ("**WWTF**"). As with Offsite Big Water, GCEDC previously undertook a review of the WWTF (as well as the affiliated wet well and Force Main) pursuant to SEQRA in 2020 and 2022. NYSDEC previously issued all permits necessary for the construction of the WWTF. Sanitary sewer will be collected from the bypass connector road, STAMP Drive, and Crosby Road then conveyed to the WWTF through a 12-inch or 15-inch gravity system. The system will include two sanitary sewer pump stations and 6-inch or 8-inch force mains that will collect sanitary sewer at the low points and pump back to the gravity system.

#### Onsite Process Water Collection System:

GCEDC is proposing the development of an onsite process water collection system ("**Onsite Water Collection System**") which is designed to be an amenity for future tenants of STAMP that have the need to discharge process wastewater through the STAMP Force Main, which was specifically designed for such purposes. The Onsite Water Collection System will consist of a combination of gravity sanitary sewer, pump stations and force mains to convey up to 6.0 mgd of treated effluent to the STAMP Onsite Main Pump Station ("**MPS**"). Each individual tenant discharging process water to the collection system will be required to obtain its own SPDES permit from NYSDEC and will be required to meet stringent effluent limits at the point of discharge to the collection system. Once process water SPDES permits are obtained, the process water would then be conveyed through the Force Main for discharge to Oak Orchard Creek. The onsite process water collection system will consist of a 24-inch gravity collection

system. A pump station and force main will be constructed at the low point in the system to pump back to the gravity system or pump to the MPS. *See, Exhibit H.* Notably, any future discharge to the Onsite Water Collection System will be evaluated pursuant to SEQRA and be the subject of standalone NYSDEC permits.

## **Power**

### **Onsite Natural Gas:**

To support development at the STAMP site an onsite natural gas network will be constructed along the bypass Road, the bypass connector road, STAMP Drive, and Crosby Road. This natural gas distribution system will supply Scannell properties and the STAMP Onsite WWTF with natural gas service connections. *See, Exhibit I.*

### **Onsite Electric:**

An onsite 115 kV electric service will be required to provide electric service to the tenants at the STAMP site. The electric distribution system will be constructed along the bypass road, the bypass connector road, Crosby Road, Stamp Drive and will follow the 115kV reroute along the western STAMP buffer area. The electric distribution system will provide electric service to Plug Power, Edwards Vacuum, Scannell properties, and the STAMP Onsite WWTF. *See, Exhibit J.*

It is anticipated that this portion of the Current Proposed STAMP Development will require the following permits/approvals/incentives:

- NYSDEC Part 182 Incidental Take Permit
- NYSDEC SPDES Permit for Construction
- NYSDEC Freshwater Wetlands Permit
- Genesee County Highway Work Permit
- Empire State Development Incentives
- USACE NWP
- NYSDOT Consultation

# Exhibit B

**Full Environmental Assessment Form**  
**Part 1 - Project and Setting**

**Instructions for Completing Part 1**

**Part 1 is to be completed by the applicant or project sponsor.** Responses become part of the application for approval or funding, are subject to public review, and may be subject to further verification.

Complete Part 1 based on information currently available. If additional research or investigation would be needed to fully respond to any item, please answer as thoroughly as possible based on current information; indicate whether missing information does not exist, or is not reasonably available to the sponsor; and, when possible, generally describe work or studies which would be necessary to update or fully develop that information.

Applicants/sponsors must complete all items in Sections A & B. In Sections C, D & E, most items contain an initial question that must be answered either “Yes” or “No”. If the answer to the initial question is “Yes”, complete the sub-questions that follow. If the answer to the initial question is “No”, proceed to the next question. Section F allows the project sponsor to identify and attach any additional information. Section G requires the name and signature of the applicant or project sponsor to verify that the information contained in Part 1 is accurate and complete.

**A. Project and Applicant/Sponsor Information.**

Name of Action or Project: Project Kingfisher		
Project Location (describe, and attach a general location map): Science Technology and Advanced Manufacturing Park (STAMP)		
Brief Description of Proposed Action (include purpose or need): Edwards Vacuum LLC (“Edwards Vacuum”) has selected the STAMP Site for the location of its proposed 255,000 sq. ft. machining and assembly hall together with office building space. In a future phase, it is anticipated that Edwards Vacuum will construct a 255,000 sq. ft. addition to its proposed development. This project will be developed on approximately 80 acres of land east of Crosby Road and North of STAMP Drive. See Project Description.		
Name of Applicant/Sponsor: Edwards Vacuum, LLC		Telephone: +447740213570
		E-Mail: andy.marsh@edwardsvacuum.com
Address: Innovation Drive		
City/PO: Burgess Hill, West Sussex RH15 9TW, UK	State:	Zip Code:
Project Contact (if not same as sponsor; give name and title/role):		Telephone:
		E-Mail:
Address:		
City/PO:	State:	Zip Code:
Property Owner (if not same as sponsor): Genesee County Industrial Development Center d/b/a Genesee County Eco Dev Center		Telephone: 1-585-343-4866, ext. 17
		E-Mail: mmasse@gcedc.com
Address: 99 MedTech Drive, Suite 106		
City/PO: Batavia	State: New York	Zip Code: 14020

**B. Government Approvals**

**B. Government Approvals, Funding, or Sponsorship.** (“Funding” includes grants, loans, tax relief, and any other forms of financial assistance.)

Government Entity	If Yes: Identify Agency and Approval(s) Required	Application Date (Actual or projected)
a. City Council, Town Board, or Village Board of Trustees <input type="checkbox"/> Yes <input checked="" type="checkbox"/> No		
b. City, Town or Village Planning Board or Commission <input checked="" type="checkbox"/> Yes <input type="checkbox"/> No	Town of Alabama Planning Board	
c. City, Town or Village Zoning Board of Appeals <input type="checkbox"/> Yes <input checked="" type="checkbox"/> No		
d. Other local agencies <input checked="" type="checkbox"/> Yes <input type="checkbox"/> No	GCEDC PILOT, sales tax exemption, mortgage tax exemption	
e. County agencies <input checked="" type="checkbox"/> Yes <input type="checkbox"/> No	Genesee County Planning Board approval	
f. Regional agencies <input checked="" type="checkbox"/> Yes <input type="checkbox"/> No	Empire State Development incentives	
g. State agencies <input checked="" type="checkbox"/> Yes <input type="checkbox"/> No	NYSDEC SPDES for construction, NYSDEC SWPPP, NYPA Hydropower allocation	
h. Federal agencies <input checked="" type="checkbox"/> Yes <input type="checkbox"/> No	Air facility permit, CHIPS Act funding	
i. Coastal Resources. i. Is the project site within a Coastal Area, or the waterfront area of a Designated Inland Waterway? <input type="checkbox"/> Yes <input checked="" type="checkbox"/> No  ii. Is the project site located in a community with an approved Local Waterfront Revitalization Program? <input type="checkbox"/> Yes <input checked="" type="checkbox"/> No iii. Is the project site within a Coastal Erosion Hazard Area? <input type="checkbox"/> Yes <input checked="" type="checkbox"/> No		

**C. Planning and Zoning**

**C.1. Planning and zoning actions.**

Will administrative or legislative adoption, or amendment of a plan, local law, ordinance, rule or regulation be the only approval(s) which must be granted to enable the proposed action to proceed?  Yes  No

- If Yes, complete sections C, F and G.
- If No, proceed to question C.2 and complete all remaining sections and questions in Part 1

**C.2. Adopted land use plans.**

a. Do any municipally- adopted (city, town, village or county) comprehensive land use plan(s) include the site where the proposed action would be located?  Yes  No

If Yes, does the comprehensive plan include specific recommendations for the site where the proposed action would be located?  Yes  No

b. Is the site of the proposed action within any local or regional special planning district (for example: Greenway; Brownfield Opportunity Area (BOA); designated State or Federal heritage area; watershed management plan; or other?)  Yes  No

If Yes, identify the plan(s):

\_\_\_\_\_

\_\_\_\_\_

\_\_\_\_\_

c. Is the proposed action located wholly or partially within an area listed in an adopted municipal open space plan, or an adopted municipal farmland protection plan?  Yes  No

If Yes, identify the plan(s):

Genesee County Smartgrowth Plan \_\_\_\_\_

\_\_\_\_\_

\_\_\_\_\_

**C.3. Zoning**

a. Is the site of the proposed action located in a municipality with an adopted zoning law or ordinance.  Yes  No  
If Yes, what is the zoning classification(s) including any applicable overlay district?

Technology District 1

b. Is the use permitted or allowed by a special or conditional use permit?  Yes  No

c. Is a zoning change requested as part of the proposed action?  Yes  No

If Yes,

i. What is the proposed new zoning for the site? \_\_\_\_\_

**C.4. Existing community services.**

a. In what school district is the project site located? Oakfield Alabama Central School District

b. What police or other public protection forces serve the project site?  
Genesee County Sheriff's department

c. Which fire protection and emergency medical services serve the project site?  
Town of Alabama Fire Department, Genesee County Emergency Management Services, MercyFlight Ambulance services

d. What parks serve the project site?  
N/A

**D. Project Details**

**D.1. Proposed and Potential Development**

a. What is the general nature of the proposed action (e.g., residential, industrial, commercial, recreational; if mixed, include all components)? Industrial manufacturing

b. a. Total acreage of the site of the proposed action? \_\_\_\_\_ 80 acres

b. Total acreage to be physically disturbed? \_\_\_\_\_ 80 acres

c. Total acreage (project site and any contiguous properties) owned or controlled by the applicant or project sponsor? \_\_\_\_\_ 80 acres

c. Is the proposed action an expansion of an existing project or use?  Yes  No

i. If Yes, what is the approximate percentage of the proposed expansion and identify the units (e.g., acres, miles, housing units, square feet)? % \_\_\_\_\_ Units: \_\_\_\_\_

d. Is the proposed action a subdivision, or does it include a subdivision?  Yes  No

If Yes,

i. Purpose or type of subdivision? (e.g., residential, industrial, commercial; if mixed, specify types)  
Industrial

ii. Is a cluster/conservation layout proposed?  Yes  No

iii. Number of lots proposed? \_\_\_\_\_ 1 \_\_\_\_\_

iv. Minimum and maximum proposed lot sizes? Minimum \_\_\_\_\_ 50 \_\_\_\_\_ Maximum \_\_\_\_\_ 80 \_\_\_\_\_

e. Will the proposed action be constructed in multiple phases?  Yes  No

i. If No, anticipated period of construction: \_\_\_\_\_ months

ii. If Yes:

- Total number of phases anticipated \_\_\_\_\_ 2 \_\_\_\_\_
- Anticipated commencement date of phase 1 (including demolition) \_\_\_\_\_ 3 month \_\_\_\_\_ 23 year
- Anticipated completion date of final phase \_\_\_\_\_ 3 month \_\_\_\_\_ 25 year

• Generally describe connections or relationships among phases, including any contingencies where progress of one phase may determine timing or duration of future phases: \_\_\_\_\_

The second phase would be an expansion that would double the size of the machine shop area as identified on the proposed site plan.

f. Does the project include new residential uses?  Yes  No  
 If Yes, show numbers of units proposed.

	<u>One Family</u>	<u>Two Family</u>	<u>Three Family</u>	<u>Multiple Family (four or more)</u>
Initial Phase	_____	_____	_____	_____
At completion	_____	_____	_____	_____
of all phases	_____	_____	_____	_____

g. Does the proposed action include new non-residential construction (including expansions)?  Yes  No  
 If Yes,

i. Total number of structures 2

ii. Dimensions (in feet) of largest proposed structure: 40' height; 500' width; and 1,750' length

iii. Approximate extent of building space to be heated or cooled: 423,000 square feet

h. Does the proposed action include construction or other activities that will result in the impoundment of any liquids, such as creation of a water supply, reservoir, pond, lake, waste lagoon or other storage?  Yes  No  
 If Yes,

i. Purpose of the impoundment: Stormwater pond

ii. If a water impoundment, the principal source of the water:  Ground water  Surface water streams  Other specify: Stormwater

iii. If other than water, identify the type of impounded/contained liquids and their source.  
N/A

iv. Approximate size of the proposed impoundment. Volume: \_\_\_\_\_ million gallons; surface area: 11 acres

v. Dimensions of the proposed dam or impounding structure: 6 height; 1,550 length

vi. Construction method/materials for the proposed dam or impounding structure (e.g., earth fill, rock, wood, concrete):  
Conventional earth moving methods, native earth fill

**D.2. Project Operations**

a. Does the proposed action include any excavation, mining, or dredging, during construction, operations, or both?  Yes  No  
 (Not including general site preparation, grading or installation of utilities or foundations where all excavated materials will remain onsite)  
 If Yes:

i. What is the purpose of the excavation or dredging? \_\_\_\_\_

ii. How much material (including rock, earth, sediments, etc.) is proposed to be removed from the site?

- Volume (specify tons or cubic yards): \_\_\_\_\_
- Over what duration of time? \_\_\_\_\_

iii. Describe nature and characteristics of materials to be excavated or dredged, and plans to use, manage or dispose of them.  
 \_\_\_\_\_  
 \_\_\_\_\_

iv. Will there be onsite dewatering or processing of excavated materials?  Yes  No  
 If yes, describe. \_\_\_\_\_  
 \_\_\_\_\_

v. What is the total area to be dredged or excavated? \_\_\_\_\_ acres

vi. What is the maximum area to be worked at any one time? \_\_\_\_\_ acres

vii. What would be the maximum depth of excavation or dredging? \_\_\_\_\_ feet

viii. Will the excavation require blasting?  Yes  No

ix. Summarize site reclamation goals and plan: \_\_\_\_\_  
 \_\_\_\_\_  
 \_\_\_\_\_

b. Would the proposed action cause or result in alteration of, increase or decrease in size of, or encroachment into any existing wetland, waterbody, shoreline, beach or adjacent area?  Yes  No  
 If Yes:

i. Identify the wetland or waterbody which would be affected (by name, water index number, wetland map number or geographic description): \_\_\_\_\_  
 \_\_\_\_\_

ii. Describe how the proposed action would affect that waterbody or wetland, e.g. excavation, fill, placement of structures, or alteration of channels, banks and shorelines. Indicate extent of activities, alterations and additions in square feet or acres:

\_\_\_\_\_  
\_\_\_\_\_  
\_\_\_\_\_

iii. Will the proposed action cause or result in disturbance to bottom sediments?  Yes  No

If Yes, describe: \_\_\_\_\_

iv. Will the proposed action cause or result in the destruction or removal of aquatic vegetation?  Yes  No

If Yes: \_\_\_\_\_

- acres of aquatic vegetation proposed to be removed: \_\_\_\_\_
- expected acreage of aquatic vegetation remaining after project completion: \_\_\_\_\_
- purpose of proposed removal (e.g. beach clearing, invasive species control, boat access): \_\_\_\_\_
- proposed method of plant removal: \_\_\_\_\_
- if chemical/herbicide treatment will be used, specify product(s): \_\_\_\_\_

v. Describe any proposed reclamation/mitigation following disturbance: \_\_\_\_\_

c. Will the proposed action use, or create a new demand for water?  Yes  No

If Yes: \_\_\_\_\_

i. Total anticipated water usage/demand per day: \_\_\_\_\_ 30,000 gallons/day

ii. Will the proposed action obtain water from an existing public water supply?  Yes  No

If Yes: \_\_\_\_\_

- Name of district or service area: STAMP Water Works, Inc. 12 inch transmission main along STAMP Drive
- Does the existing public water supply have capacity to serve the proposal?  Yes  No
- Is the project site in the existing district?  Yes  No
- Is expansion of the district needed?  Yes  No
- Do existing lines serve the project site?  Yes  No

iii. Will line extension within an existing district be necessary to supply the project?  Yes  No

If Yes: \_\_\_\_\_

- Describe extensions or capacity expansions proposed to serve this project: \_\_\_\_\_  
Approximately 2,000 linear feet of 12 inch (or less) water main will extend from the existing onsite water main to the project boundary
- Source(s) of supply for the district: Genesee County

iv. Is a new water supply district or service area proposed to be formed to serve the project site?  Yes  No

If Yes: \_\_\_\_\_

- Applicant/sponsor for new district: \_\_\_\_\_
- Date application submitted or anticipated: \_\_\_\_\_
- Proposed source(s) of supply for new district: \_\_\_\_\_

v. If a public water supply will not be used, describe plans to provide water supply for the project: \_\_\_\_\_

N/A \_\_\_\_\_

vi. If water supply will be from wells (public or private), what is the maximum pumping capacity: \_\_\_\_\_ N/A gallons/minute.

d. Will the proposed action generate liquid wastes?  Yes  No

If Yes: \_\_\_\_\_

i. Total anticipated liquid waste generation per day: \_\_\_\_\_ 5,000 gallons/day

ii. Nature of liquid wastes to be generated (e.g., sanitary wastewater, industrial; if combination, describe all components and approximate volumes or proportions of each): \_\_\_\_\_

sanitary wastewater

iii. Will the proposed action use any existing public wastewater treatment facilities?  Yes  No

If Yes: \_\_\_\_\_

- Name of wastewater treatment plant to be used: STAMP Sewer Works WWTF
- Name of district: STAMP Sewer Works
- Does the existing wastewater treatment plant have capacity to serve the project?  Yes  No
- Is the project site in the existing district?  Yes  No
- Is expansion of the district needed?  Yes  No

• Do existing sewer lines serve the project site?  Yes  No  
 • Will a line extension within an existing district be necessary to serve the project?  Yes  No  
 If Yes:  
 • Describe extensions or capacity expansions proposed to serve this project: \_\_\_\_\_  
 This project will require the construction of a new sanitary sewer pump station and a new 4 inch force main or 12 inch gravity sanitary sewer main approximately 2,800 linear feet in length.

iv. Will a new wastewater (sewage) treatment district be formed to serve the project site?  Yes  No  
 If Yes:  
 • Applicant/sponsor for new district: \_\_\_\_\_  
 • Date application submitted or anticipated: \_\_\_\_\_  
 • What is the receiving water for the wastewater discharge? \_\_\_\_\_  
 v. If public facilities will not be used, describe plans to provide wastewater treatment for the project, including specifying proposed receiving water (name and classification if surface discharge or describe subsurface disposal plans):  
 Sequential batch reactor system (SBR) will be utilized for treatment at the WWTF prior to discharge via force main to Oak Orchard Creek vis NYSDEC SPDES discharge permit.

vi. Describe any plans or designs to capture, recycle or reuse liquid waste: \_\_\_\_\_  
 All wastewater is sanitary wastewater and will be sent to WWTF.

---

e. Will the proposed action disturb more than one acre and create stormwater runoff, either from new point sources (i.e. ditches, pipes, swales, curbs, gutters or other concentrated flows of stormwater) or non-point source (i.e. sheet flow) during construction or post construction?  Yes  No  
 If Yes:  
 i. How much impervious surface will the project create in relation to total size of project parcel?  
 \_\_\_\_\_ Square feet or \_\_\_\_\_65 acres (impervious surface)  
 \_\_\_\_\_ Square feet or \_\_\_\_\_80 acres (parcel size)  
 ii. Describe types of new point sources. Building roofs, parking areas, access drives, etc. \_\_\_\_\_  
 iii. Where will the stormwater runoff be directed (i.e. on-site stormwater management facility/structures, adjacent properties, groundwater, on-site surface water or off-site surface waters)?  
 Onsite stormwater management facilities \_\_\_\_\_  
 • If to surface waters, identify receiving water bodies or wetlands: \_\_\_\_\_  
 • Will stormwater runoff flow to adjacent properties?  Yes  No

iv. Does the proposed plan minimize impervious surfaces, use pervious materials or collect and re-use stormwater?  Yes  No

f. Does the proposed action include, or will it use on-site, one or more sources of air emissions, including fuel combustion, waste incineration, or other processes or operations?  Yes  No  
 If Yes, identify:  
 i. Mobile sources during project operations (e.g., heavy equipment, fleet or delivery vehicles)  
 Trucks, employee vehicles \_\_\_\_\_  
 ii. Stationary sources during construction (e.g., power generation, structural heating, batch plant, crushers) \_\_\_\_\_  
 iii. Stationary sources during operations (e.g., process emissions, large boilers, electric generation) \_\_\_\_\_

g. Will any air emission sources named in D.2.f (above), require a NY State Air Registration, Air Facility Permit, or Federal Clean Air Act Title IV or Title V Permit?  Yes  No  
 If Yes:  
 i. Is the project site located in an Air quality non-attainment area? (Area routinely or periodically fails to meet ambient air quality standards for all or some parts of the year)  Yes  No  
 ii. In addition to emissions as calculated in the application, the project will generate:  
 • \_\_\_\_\_ 165.105 Tons/year (short tons) of Carbon Dioxide (CO<sub>2</sub>)  
 • \_\_\_\_\_ 0 Tons/year (short tons) of Nitrous Oxide (N<sub>2</sub>O)  
 • \_\_\_\_\_ 0 Tons/year (short tons) of Perfluorocarbons (PFCs)  
 • \_\_\_\_\_ 0 Tons/year (short tons) of Sulfur Hexafluoride (SF<sub>6</sub>)  
 • \_\_\_\_\_ 4.55 Tons/year (short tons) of Carbon Dioxide equivalent of Hydroflouorocarbons (HFCs)  
 • \_\_\_\_\_ 4.95 Tons/year (short tons) of Hazardous Air Pollutants (HAPs)

h. Will the proposed action generate or emit methane (including, but not limited to, sewage treatment plants, landfills, composting facilities)?  Yes  No

If Yes:

i. Estimate methane generation in tons/year (metric): \_\_\_\_\_

ii. Describe any methane capture, control or elimination measures included in project design (e.g., combustion to generate heat or electricity, flaring): \_\_\_\_\_

---

i. Will the proposed action result in the release of air pollutants from open-air operations or processes, such as quarry or landfill operations?  Yes  No

If Yes: Describe operations and nature of emissions (e.g., diesel exhaust, rock particulates/dust): \_\_\_\_\_

---

j. Will the proposed action result in a substantial increase in traffic above present levels or generate substantial new demand for transportation facilities or services?  Yes  No

If Yes:

i. When is the peak traffic expected (Check all that apply):  Morning  Evening  Weekend  
 Randomly between hours of \_\_\_\_\_ to \_\_\_\_\_.

ii. For commercial activities only, projected number of truck trips/day and type (e.g., semi trailers and dump trucks): \_\_\_\_\_  
 Approximately 20 trucks per day loading and unloading

iii. Parking spaces: Existing \_\_\_\_\_ 0 \_\_\_\_\_ Proposed \_\_\_\_\_ 500 \_\_\_\_\_ Net increase/decrease \_\_\_\_\_ 500

iv. Does the proposed action include any shared use parking?  Yes  No

v. If the proposed action includes any modification of existing roads, creation of new roads or change in existing access, describe:  
 Extension of roadway access off of STAMP Drive and reconstruction of Crosby Road from STAMP Drive heading north to the projects parcel.

vi. Are public/private transportation service(s) or facilities available within 1/2 mile of the proposed site?  Yes  No

vii. Will the proposed action include access to public transportation or accommodations for use of hybrid, electric or other alternative fueled vehicles?  Yes  No

viii. Will the proposed action include plans for pedestrian or bicycle accommodations for connections to existing pedestrian or bicycle routes?  Yes  No

---

k. Will the proposed action (for commercial or industrial projects only) generate new or additional demand for energy?  Yes  No

If Yes:

i. Estimate annual electricity demand during operation of the proposed action: \_\_\_\_\_  
 4 mW for Phase 1, and additional 3 mW for Phase 2

ii. Anticipated sources/suppliers of electricity for the project (e.g., on-site combustion, on-site renewable, via grid/local utility, or other):  
 Transmitted by NYPA and delivered by National Grid

iii. Will the proposed action require a new, or an upgrade, to an existing substation?  Yes  No

---

l. Hours of operation. Answer all items which apply.

<p>i. During Construction:</p> <ul style="list-style-type: none"> <li>• Monday - Friday: _____ 7:00 am to 5:00 pm _____</li> <li>• Saturday: _____ None _____</li> <li>• Sunday: _____ None _____</li> <li>• Holidays: _____ None _____</li> </ul>	<p>ii. During Operations:</p> <ul style="list-style-type: none"> <li>• Monday - Friday: _____ 24 Hours _____</li> <li>• Saturday: _____ 24 Hours _____</li> <li>• Sunday: _____ 24 Hours _____</li> <li>• Holidays: _____ 24 Hours _____</li> </ul>
--	---

m. Will the proposed action produce noise that will exceed existing ambient noise levels during construction, operation, or both?  Yes  No  
 If yes:  
 i. Provide details including sources, time of day and duration:  
 During construction, just construction noise sources such as trucks and excavators \_\_\_\_\_  
 \_\_\_\_\_

ii. Will the proposed action remove existing natural barriers that could act as a noise barrier or screen?  Yes  No  
 Describe: \_\_\_\_\_  
 \_\_\_\_\_

---

n. Will the proposed action have outdoor lighting?  Yes  No  
 If yes:  
 i. Describe source(s), location(s), height of fixture(s), direction/aim, and proximity to nearest occupied structures:  
 Perimeter lighting on 10-20' poles. lighting on equipment skids and at building exits. Lighting in parking area. Downward-facing high-efficiency LED lights. dark-sky compliant.

ii. Will proposed action remove existing natural barriers that could act as a light barrier or screen?  Yes  No  
 Describe: \_\_\_\_\_  
 \_\_\_\_\_

---

o. Does the proposed action have the potential to produce odors for more than one hour per day?  Yes  No  
 If Yes, describe possible sources, potential frequency and duration of odor emissions, and proximity to nearest occupied structures: \_\_\_\_\_  
 \_\_\_\_\_  
 \_\_\_\_\_

---

p. Will the proposed action include any bulk storage of petroleum (combined capacity of over 1,100 gallons) or chemical products 185 gallons in above ground storage or any amount in underground storage?  Yes  No  
 If Yes:  
 i. Product(s) to be stored \_\_\_\_\_  
 ii. Volume(s) \_\_\_\_\_ per unit time \_\_\_\_\_ (e.g., month, year)  
 iii. Generally, describe the proposed storage facilities: \_\_\_\_\_  
 \_\_\_\_\_

---

q. Will the proposed action (commercial, industrial and recreational projects only) use pesticides (i.e., herbicides, insecticides) during construction or operation?  Yes  No  
 If Yes:  
 i. Describe proposed treatment(s):  
 \_\_\_\_\_  
 \_\_\_\_\_  
 \_\_\_\_\_

ii. Will the proposed action use Integrated Pest Management Practices?  Yes  No

---

r. Will the proposed action (commercial or industrial projects only) involve or require the management or disposal of solid waste (excluding hazardous materials)?  Yes  No  
 If Yes:  
 i. Describe any solid waste(s) to be generated during construction or operation of the facility:  
 • Construction: \_\_\_\_\_ 1 tons per \_\_\_\_\_ Month (unit of time)  
 • Operation : \_\_\_\_\_ .25 tons per \_\_\_\_\_ Year (unit of time)  
 ii. Describe any proposals for on-site minimization, recycling or reuse of materials to avoid disposal as solid waste:  
 • Construction: All options for recycling of materials will be considered as the project moves forward.  
 \_\_\_\_\_  
 • Operation: All options for recycling of materials will be considered as the project moves forward.  
 \_\_\_\_\_  
 iii. Proposed disposal methods/facilities for solid waste generated on-site:  
 • Construction: Dumpster emptied on a regular basis and trucked to local landfill.  
 \_\_\_\_\_  
 • Operation: Typical Commercial Trash Receptical emptied on a regular basis and trucked to local landfill.  
 \_\_\_\_\_  
 \_\_\_\_\_

s. Does the proposed action include construction or modification of a solid waste management facility?  Yes  No  
 If Yes:  
 i. Type of management or handling of waste proposed for the site (e.g., recycling or transfer station, composting, landfill, or other disposal activities): \_\_\_\_\_  
 ii. Anticipated rate of disposal/processing:  
 • \_\_\_\_\_ Tons/month, if transfer or other non-combustion/thermal treatment, or  
 • \_\_\_\_\_ Tons/hour, if combustion or thermal treatment  
 iii. If landfill, anticipated site life: \_\_\_\_\_ years

t. Will the proposed action at the site involve the commercial generation, treatment, storage, or disposal of hazardous waste?  Yes  No  
 If Yes:  
 i. Name(s) of all hazardous wastes or constituents to be generated, handled or managed at facility: \_\_\_\_\_  
 \_\_\_\_\_  
 ii. Generally describe processes or activities involving hazardous wastes or constituents: \_\_\_\_\_  
 \_\_\_\_\_  
 iii. Specify amount to be handled or generated \_\_\_\_\_ tons/month  
 iv. Describe any proposals for on-site minimization, recycling or reuse of hazardous constituents: \_\_\_\_\_  
 \_\_\_\_\_  
 v. Will any hazardous wastes be disposed at an existing offsite hazardous waste facility?  Yes  No  
 If Yes: provide name and location of facility: \_\_\_\_\_  
 \_\_\_\_\_  
 If No: describe proposed management of any hazardous wastes which will not be sent to a hazardous waste facility:  
 \_\_\_\_\_  
 \_\_\_\_\_

**E. Site and Setting of Proposed Action**

**E.1. Land uses on and surrounding the project site**

a. Existing land uses.  
 i. Check all uses that occur on, adjoining and near the project site.  
 Urban  Industrial  Commercial  Residential (suburban)  Rural (non-farm)  
 Forest  Agriculture  Aquatic  Other (specify): \_\_\_\_\_  
 ii. If mix of uses, generally describe:  
 Farmland, Plug Power green hydrogen facility, 345 kV to 115 kV substation  
 \_\_\_\_\_

b. Land uses and covertypes on the project site.

Land use or Coverture	Current Acreage	Acreage After Project Completion	Change (Acres +/-)
• Roads, buildings, and other paved or impervious surfaces	0	65	+65
• Forested	0	0	0
• Meadows, grasslands or brushlands (non-agricultural, including abandoned agricultural)	0	5	+5
• Agricultural (includes active orchards, field, greenhouse etc.)	80	0	-80
• Surface water features (lakes, ponds, streams, rivers, etc.)	0	10	+10
• Wetlands (freshwater or tidal)	0	0	0
• Non-vegetated (bare rock, earth or fill)	0	0	0
• Other Describe: _____	0	0	0

c. Is the project site presently used by members of the community for public recreation?  Yes  No  
i. If Yes: explain: \_\_\_\_\_

d. Are there any facilities serving children, the elderly, people with disabilities (e.g., schools, hospitals, licensed day care centers, or group homes) within 1500 feet of the project site?  Yes  No  
If Yes,  
i. Identify Facilities: \_\_\_\_\_  
\_\_\_\_\_

e. Does the project site contain an existing dam?  Yes  No  
If Yes:  
i. Dimensions of the dam and impoundment:  
• Dam height: \_\_\_\_\_ feet  
• Dam length: \_\_\_\_\_ feet  
• Surface area: \_\_\_\_\_ acres  
• Volume impounded: \_\_\_\_\_ gallons OR acre-feet  
ii. Dam's existing hazard classification: \_\_\_\_\_  
iii. Provide date and summarize results of last inspection: \_\_\_\_\_  
\_\_\_\_\_

f. Has the project site ever been used as a municipal, commercial or industrial solid waste management facility, or does the project site adjoin property which is now, or was at one time, used as a solid waste management facility?  Yes  No  
If Yes:  
i. Has the facility been formally closed?  Yes  No  
• If yes, cite sources/documentation: \_\_\_\_\_  
ii. Describe the location of the project site relative to the boundaries of the solid waste management facility: \_\_\_\_\_  
\_\_\_\_\_  
iii. Describe any development constraints due to the prior solid waste activities: \_\_\_\_\_  
\_\_\_\_\_

g. Have hazardous wastes been generated, treated and/or disposed of at the site, or does the project site adjoin property which is now or was at one time used to commercially treat, store and/or dispose of hazardous waste?  Yes  No  
If Yes:  
i. Describe waste(s) handled and waste management activities, including approximate time when activities occurred: \_\_\_\_\_  
\_\_\_\_\_

h. Potential contamination history. Has there been a reported spill at the proposed project site, or have any remedial actions been conducted at or adjacent to the proposed site?  Yes  No  
If Yes:  
i. Is any portion of the site listed on the NYSDEC Spills Incidents database or Environmental Site Remediation database? Check all that apply:  Yes  No  
 Yes – Spills Incidents database Provide DEC ID number(s): 15105158  
 Yes – Environmental Site Remediation database Provide DEC ID number(s): \_\_\_\_\_  
 Neither database  
ii. If site has been subject of RCRA corrective activities, describe control measures: \_\_\_\_\_  
N/A \_\_\_\_\_  
iii. Is the project within 2000 feet of any site in the NYSDEC Environmental Site Remediation database?  Yes  No  
If yes, provide DEC ID number(s): \_\_\_\_\_  
iv. If yes to (i), (ii) or (iii) above, describe current status of site(s): \_\_\_\_\_  
Record closed. \_\_\_\_\_  
\_\_\_\_\_

v. Is the project site subject to an institutional control limiting property uses?  Yes  No

- If yes, DEC site ID number: \_\_\_\_\_
- Describe the type of institutional control (e.g., deed restriction or easement): \_\_\_\_\_
- Describe any use limitations: \_\_\_\_\_
- Describe any engineering controls: \_\_\_\_\_
- Will the project affect the institutional or engineering controls in place?  Yes  No
- Explain: \_\_\_\_\_  
 \_\_\_\_\_  
 \_\_\_\_\_

---

**E.2. Natural Resources On or Near Project Site**

a. What is the average depth to bedrock on the project site? \_\_\_\_\_ >6.5 feet

b. Are there bedrock outcroppings on the project site?  Yes  No  
 If Yes, what proportion of the site is comprised of bedrock outcroppings? \_\_\_\_\_ %

c. Predominant soil type(s) present on project site:

Odessa Silt Loam	_____	63 %
Lakemont Silty Clay	_____	14 %
Collomer Solt Loam	_____	12 %

d. What is the average depth to the water table on the project site? Average: \_\_\_\_\_ 45 feet

e. Drainage status of project site soils:  Well Drained: \_\_\_\_\_ 0 % of site  
 Moderately Well Drained: \_\_\_\_\_ 12 % of site  
 Poorly Drained \_\_\_\_\_ 88 % of site

f. Approximate proportion of proposed action site with slopes:  0-10%: \_\_\_\_\_ 100 % of site  
 10-15%: \_\_\_\_\_ % of site  
 15% or greater: \_\_\_\_\_ % of site

g. Are there any unique geologic features on the project site?  Yes  No  
 If Yes, describe: \_\_\_\_\_  
 \_\_\_\_\_

h. Surface water features.

i. Does any portion of the project site contain wetlands or other waterbodies (including streams, rivers, ponds or lakes)?  Yes  No

ii. Do any wetlands or other waterbodies adjoin the project site?  Yes  No

If Yes to either *i* or *ii*, continue. If No, skip to E.2.i.

iii. Are any of the wetlands or waterbodies within or adjoining the project site regulated by any federal, state or local agency?  Yes  No

iv. For each identified regulated wetland and waterbody on the project site, provide the following information:

- Streams: Name Tributary 3 Classification \_\_\_\_\_
- Lakes or Ponds: Name \_\_\_\_\_ Classification \_\_\_\_\_
- Wetlands: Name Wetland 34 and Wetland 48 Approximate Size 3.86 acres
- Wetland No. (if regulated by DEC) \_\_\_\_\_

v. Are any of the above water bodies listed in the most recent compilation of NYS water quality-impaired waterbodies?  Yes  No  
 If yes, name of impaired water body/bodies and basis for listing as impaired: \_\_\_\_\_  
 \_\_\_\_\_

---

i. Is the project site in a designated Floodway?  Yes  No

j. Is the project site in the 100-year Floodplain?  Yes  No

k. Is the project site in the 500-year Floodplain?  Yes  No

l. Is the project site located over, or immediately adjoining, a primary, principal or sole source aquifer?  Yes  No  
 If Yes:  
 i. Name of aquifer: \_\_\_\_\_

<p>m. Identify the predominant wildlife species that occupy or use the project site:</p> <p>Whitetailed deer _____ Common songbirds _____ Small mammals _____</p> <p>_____</p>	
<p>n. Does the project site contain a designated significant natural community? <span style="float: right;"><input type="checkbox"/> Yes <input checked="" type="checkbox"/> No</span></p> <p>If Yes:</p> <p style="margin-left: 20px;">i. Describe the habitat/community (composition, function, and basis for designation): _____</p> <p style="margin-left: 20px;">ii. Source(s) of description or evaluation: _____</p> <p style="margin-left: 20px;">iii. Extent of community/habitat:</p> <ul style="list-style-type: none"> <li>• Currently: _____ acres</li> <li>• Following completion of project as proposed: _____ acres</li> <li>• Gain or loss (indicate + or -): _____ acres</li> </ul>	
<p>o. Does project site contain any species of plant or animal that is listed by the federal government or NYS as endangered or threatened, or does it contain any areas identified as habitat for an endangered or threatened species? <span style="float: right;"><input checked="" type="checkbox"/> Yes <input type="checkbox"/> No</span></p> <p>If Yes:</p> <p style="margin-left: 20px;">i. Species and listing (endangered or threatened): _____</p> <p>Norther Harrier, Short eared owl</p>	
<p>p. Does the project site contain any species of plant or animal that is listed by NYS as rare, or as a species of special concern? <span style="float: right;"><input type="checkbox"/> Yes <input checked="" type="checkbox"/> No</span></p> <p>If Yes:</p> <p style="margin-left: 20px;">i. Species and listing: _____</p>	
<p>q. Is the project site or adjoining area currently used for hunting, trapping, fishing or shell fishing? <span style="float: right;"><input checked="" type="checkbox"/> Yes <input type="checkbox"/> No</span></p> <p>If yes, give a brief description of how the proposed action may affect that use: _____</p> <p>The Tonawanda Seneca Nation utilizes a wooded area to the west of the STAMP site for hunting.</p>	
<p><b>E.3. Designated Public Resources On or Near Project Site</b></p>	
<p>a. Is the project site, or any portion of it, located in a designated agricultural district certified pursuant to Agriculture and Markets Law, Article 25-AA, Section 303 and 304? <span style="float: right;"><input type="checkbox"/> Yes <input checked="" type="checkbox"/> No</span></p> <p>If Yes, provide county plus district name/number: _____</p>	
<p>b. Are agricultural lands consisting of highly productive soils present? <span style="float: right;"><input type="checkbox"/> Yes <input checked="" type="checkbox"/> No</span></p> <p style="margin-left: 20px;">i. If Yes: acreage(s) on project site? _____</p> <p style="margin-left: 20px;">ii. Source(s) of soil rating(s): _____</p>	
<p>c. Does the project site contain all or part of, or is it substantially contiguous to, a registered National Natural Landmark? <span style="float: right;"><input type="checkbox"/> Yes <input checked="" type="checkbox"/> No</span></p> <p>If Yes:</p> <p style="margin-left: 20px;">i. Nature of the natural landmark: <input type="checkbox"/> Biological Community <input type="checkbox"/> Geological Feature</p> <p style="margin-left: 20px;">ii. Provide brief description of landmark, including values behind designation and approximate size/extent: _____</p> <p>_____</p>	
<p>d. Is the project site located in or does it adjoin a state listed Critical Environmental Area? <span style="float: right;"><input type="checkbox"/> Yes <input checked="" type="checkbox"/> No</span></p> <p>If Yes:</p> <p style="margin-left: 20px;">i. CEA name: _____</p> <p style="margin-left: 20px;">ii. Basis for designation: _____</p> <p style="margin-left: 20px;">iii. Designating agency and date: _____</p>	

e. Does the project site contain, or is it substantially contiguous to, a building, archaeological site, or district which is listed on the National or State Register of Historic Places, or that has been determined by the Commissioner of the NYS Office of Parks, Recreation and Historic Preservation to be eligible for listing on the State Register of Historic Places?	<input type="checkbox"/> Yes <input checked="" type="checkbox"/> No
If Yes:	
<i>i.</i> Nature of historic/archaeological resource: <input type="checkbox"/> Archaeological Site <input type="checkbox"/> Historic Building or District	
<i>ii.</i> Name: _____	
<i>iii.</i> Brief description of attributes on which listing is based: _____	
f. Is the project site, or any portion of it, located in or adjacent to an area designated as sensitive for archaeological sites on the NY State Historic Preservation Office (SHPO) archaeological site inventory?	<input checked="" type="checkbox"/> Yes <input type="checkbox"/> No
g. Have additional archaeological or historic site(s) or resources been identified on the project site?	<input checked="" type="checkbox"/> Yes <input type="checkbox"/> No
If Yes:	
<i>i.</i> Describe possible resource(s): Phase 1 - 3 have been completed.	
<i>ii.</i> Basis for identification: _____	
h. Is the project site within five miles of any officially designated and publicly accessible federal, state, or local scenic or aesthetic resource?	<input checked="" type="checkbox"/> Yes <input type="checkbox"/> No
If Yes:	
<i>i.</i> Identify resource: Iroquois National Federal Wildlife Refuge, John White Game Farm	
<i>ii.</i> Nature of, or basis for, designation (e.g., established highway overlook, state or local park, state historic trail or scenic byway, etc.): Federal Wildlife Refuge and NYS wildlife management area	
<i>iii.</i> Distance between project and resource: _____ 2 miles.	
i. Is the project site located within a designated river corridor under the Wild, Scenic and Recreational Rivers Program 6 NYCRR 666?	<input type="checkbox"/> Yes <input checked="" type="checkbox"/> No
If Yes:	
<i>i.</i> Identify the name of the river and its designation: _____	
<i>ii.</i> Is the activity consistent with development restrictions contained in 6NYCRR Part 666?	
<input type="checkbox"/> Yes <input type="checkbox"/> No	

**F. Additional Information**

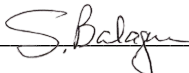
Attach any additional information which may be needed to clarify your project.

If you have identified any adverse impacts which could be associated with your proposal, please describe those impacts plus any measures which you propose to avoid or minimize them.

**G. Verification**

I certify that the information provided is true to the best of my knowledge.

Applicant/Sponsor Name Scott Balaguer Date December 02, 2022

Signature  Title Vice President Global Business Development

# Exhibit C

**Full Environmental Assessment Form**  
**Part 1 - Project and Setting**

**Instructions for Completing Part 1**

**Part 1 is to be completed by the applicant or project sponsor.** Responses become part of the application for approval or funding, are subject to public review, and may be subject to further verification.

Complete Part 1 based on information currently available. If additional research or investigation would be needed to fully respond to any item, please answer as thoroughly as possible based on current information; indicate whether missing information does not exist, or is not reasonably available to the sponsor; and, when possible, generally describe work or studies which would be necessary to update or fully develop that information.

Applicants/sponsors must complete all items in Sections A & B. In Sections C, D & E, most items contain an initial question that must be answered either “Yes” or “No”. If the answer to the initial question is “Yes”, complete the sub-questions that follow. If the answer to the initial question is “No”, proceed to the next question. Section F allows the project sponsor to identify and attach any additional information. Section G requires the name and signature of the applicant or project sponsor to verify that the information contained in Part 1 is accurate and complete.

**A. Project and Applicant/Sponsor Information.**

Name of Action or Project: Scannell Properties, LLC STAMP Site Development		
Project Location (describe, and attach a general location map): 6840 Crosby Road (SBL: 10.-1-43.12; 10.-1-39.-11; 10.-1-39.12)		
Brief Description of Proposed Action (include purpose or need): The Genesee County Industrial Development Agency d/b/a the Genesee County Economic Development Center (“GCEDC”), in conjunction with the Genesee Gateway Local Development Corporation (“GGLDC”), the non-profit real estate affiliate of the GCEDC, has been working for more than a decade on the development of the Western New York Science & Technology Advanced Manufacturing Park (“STAMP” or the “Project”), an advanced manufacturing technology campus on approximately 1,262 acres located on the west side of New York State Route 63/77, approximately five miles north of the I-90/New York State Thruway (“Site”) in the Town of Alabama, New York (“Town”). In connection with the Project, a certain proposed use of a portion of the Site is being evaluated (“Project Modifications”). Specifically, the Project Modifications involve the development of approximately 22.76 acres of a 87.7-acre site located at 6840 Crosby Road (SBL: 10.-1-43.12; 10.-1-39.-11; 10.-1-39.12) (“Site”) and the construction of up to three distribution and/or manufacturing buildings for commercial and/or industrial purposes (“Project”) facilitated by an option agreement. At full buildout and upon leasing by building tenants, the Project Modifications are expected to facilitate the employment of a 826 people at the Site.		
Name of Applicant/Sponsor: Scannell Properties, LLC	Telephone:	E-Mail:
Address:		
City/PO:	State:	Zip Code:
Project Contact (if not same as sponsor; give name and title/role): Jack Kelly	Telephone: (621) 801-9311	E-Mail: jackk@scannellproperties.com
Address:		
City/PO:	State:	Zip Code:
Property Owner (if not same as sponsor): Genesee Gateway Local Development Corp. and GCIDA d/b/a GCEDC	Telephone: (585) 343-4866, ext. 17	E-Mail: mmasse@gcedc.com
Address: 99 MedTech Drive, Suite 106		
City/PO: Batavia	State: New York	Zip Code: 14020

**B. Government Approvals**

**B. Government Approvals, Funding, or Sponsorship.** (“Funding” includes grants, loans, tax relief, and any other forms of financial assistance.)

Government Entity	If Yes: Identify Agency and Approval(s) Required	Application Date (Actual or projected)
a. City Counsel, Town Board, <input type="checkbox"/> Yes <input checked="" type="checkbox"/> No or Village Board of Trustees		
b. City, Town or Village Planning Board or Commission <input checked="" type="checkbox"/> Yes <input type="checkbox"/> No	Town of Alabama Planning Board - Site Plan Approval	Jan 2023
c. City, Town or Village Zoning Board of Appeals <input type="checkbox"/> Yes <input checked="" type="checkbox"/> No		
d. Other local agencies <input checked="" type="checkbox"/> Yes <input type="checkbox"/> No		
e. County agencies <input checked="" type="checkbox"/> Yes <input type="checkbox"/> No	Genesee County Health Department (Watermain Extensions)	Jan 2023
f. Regional agencies <input checked="" type="checkbox"/> Yes <input type="checkbox"/> No		
g. State agencies <input checked="" type="checkbox"/> Yes <input type="checkbox"/> No	NYSDEC SWPPP; SPDES; Part 182 SHPO Historical and Archaeological Review	Jan 2023
h. Federal agencies <input checked="" type="checkbox"/> Yes <input type="checkbox"/> No		
i. Coastal Resources. <ul style="list-style-type: none"> <li>i. Is the project site within a Coastal Area, or the waterfront area of a Designated Inland Waterway? <input type="checkbox"/> Yes <input checked="" type="checkbox"/> No</li> <li>ii. Is the project site located in a community with an approved Local Waterfront Revitalization Program? <input type="checkbox"/> Yes <input checked="" type="checkbox"/> No</li> <li>iii. Is the project site within a Coastal Erosion Hazard Area? <input type="checkbox"/> Yes <input checked="" type="checkbox"/> No</li> </ul>		

**C. Planning and Zoning**

**C.1. Planning and zoning actions.**

Will administrative or legislative adoption, or amendment of a plan, local law, ordinance, rule or regulation be the only approval(s) which must be granted to enable the proposed action to proceed?  Yes  No

- **If Yes**, complete sections C, F and G.
- **If No**, proceed to question C.2 and complete all remaining sections and questions in Part 1

**C.2. Adopted land use plans.**

a. Do any municipally- adopted (city, town, village or county) comprehensive land use plan(s) include the site where the proposed action would be located?  Yes  No

If Yes, does the comprehensive plan include specific recommendations for the site where the proposed action would be located?  Yes  No

b. Is the site of the proposed action within any local or regional special planning district (for example: Greenway; Brownfield Opportunity Area (BOA); designated State or Federal heritage area; watershed management plan; or other?)  Yes  No

If Yes, identify the plan(s):

\_\_\_\_\_

\_\_\_\_\_

\_\_\_\_\_

c. Is the proposed action located wholly or partially within an area listed in an adopted municipal open space plan, or an adopted municipal farmland protection plan?  Yes  No

If Yes, identify the plan(s):

Genesee County Agricultural Farmland Protection Plan; The Town of Alabama Agricultural and Farmland Protection Plan of 2018

\_\_\_\_\_

\_\_\_\_\_

**C.3. Zoning**

a. Is the site of the proposed action located in a municipality with an adopted zoning law or ordinance.  Yes  No  
If Yes, what is the zoning classification(s) including any applicable overlay district?  
TD-1 (Technology District 1)

b. Is the use permitted or allowed by a special or conditional use permit?  Yes  No

c. Is a zoning change requested as part of the proposed action?  Yes  No  
If Yes,  
i. What is the proposed new zoning for the site? \_\_\_\_\_

**C.4. Existing community services.**

a. In what school district is the project site located? Oakfield-Alabama

b. What police or other public protection forces serve the project site?  
Genesee County Sheriff

c. Which fire protection and emergency medical services serve the project site?  
Alabama Fire Dept., Genesee County EMS, Mercyflight Ambulance

d. What parks serve the project site?  
John White WMA

**D. Project Details**

**D.1. Proposed and Potential Development**

a. What is the general nature of the proposed action (e.g., residential, industrial, commercial, recreational; if mixed, include all components)? Mixed (Commercial and Industrial)

b. a. Total acreage of the site of the proposed action? 87.7 acres  
b. Total acreage to be physically disturbed? 22.76 acres  
c. Total acreage (project site and any contiguous properties) owned or controlled by the applicant or project sponsor? 87.7 acres

c. Is the proposed action an expansion of an existing project or use?  Yes  No  
i. If Yes, what is the approximate percentage of the proposed expansion and identify the units (e.g., acres, miles, housing units, square feet)? % \_\_\_\_\_ Units: \_\_\_\_\_

d. Is the proposed action a subdivision, or does it include a subdivision?  Yes  No  
If Yes,  
i. Purpose or type of subdivision? (e.g., residential, industrial, commercial; if mixed, specify types) \_\_\_\_\_  
ii. Is a cluster/conservation layout proposed?  Yes  No  
iii. Number of lots proposed? \_\_\_\_\_  
iv. Minimum and maximum proposed lot sizes? Minimum \_\_\_\_\_ Maximum \_\_\_\_\_

e. Will the proposed action be constructed in multiple phases?  Yes  No  
i. If No, anticipated period of construction: \_\_\_\_\_ months  
ii. If Yes:  
• Total number of phases anticipated 3  
• Anticipated commencement date of phase 1 (including demolition) \_\_\_\_\_ month \_\_\_\_\_ year  
• Anticipated completion date of final phase \_\_\_\_\_ month \_\_\_\_\_ year  
• Generally describe connections or relationships among phases, including any contingencies where progress of one phase may determine timing or duration of future phases: \_\_\_\_\_  
Phases are based on tenant demand and are independent.

f. Does the project include new residential uses?  Yes  No  
 If Yes, show numbers of units proposed.

	<u>One Family</u>	<u>Two Family</u>	<u>Three Family</u>	<u>Multiple Family (four or more)</u>
Initial Phase	_____	_____	_____	_____
At completion	_____	_____	_____	_____
of all phases	_____	_____	_____	_____

g. Does the proposed action include new non-residential construction (including expansions)?  Yes  No  
 If Yes,

i. Total number of structures 3

ii. Dimensions (in feet) of largest proposed structure: 110 height; 511 width; and 1219 length

iii. Approximate extent of building space to be heated or cooled: 991561 square feet

h. Does the proposed action include construction or other activities that will result in the impoundment of any liquids, such as creation of a water supply, reservoir, pond, lake, waste lagoon or other storage?  Yes  No  
 If Yes,

i. Purpose of the impoundment: \_\_\_\_\_

ii. If a water impoundment, the principal source of the water:  Ground water  Surface water streams  Other specify: \_\_\_\_\_

iii. If other than water, identify the type of impounded/contained liquids and their source. \_\_\_\_\_

iv. Approximate size of the proposed impoundment. Volume: \_\_\_\_\_ million gallons; surface area: \_\_\_\_\_ acres

v. Dimensions of the proposed dam or impounding structure: \_\_\_\_\_ height; \_\_\_\_\_ length

vi. Construction method/materials for the proposed dam or impounding structure (e.g., earth fill, rock, wood, concrete): \_\_\_\_\_

**D.2. Project Operations**

a. Does the proposed action include any excavation, mining, or dredging, during construction, operations, or both?  Yes  No  
 (Not including general site preparation, grading or installation of utilities or foundations where all excavated materials will remain onsite)  
 If Yes:

i. What is the purpose of the excavation or dredging? \_\_\_\_\_

ii. How much material (including rock, earth, sediments, etc.) is proposed to be removed from the site?

- Volume (specify tons or cubic yards): \_\_\_\_\_
- Over what duration of time? \_\_\_\_\_

iii. Describe nature and characteristics of materials to be excavated or dredged, and plans to use, manage or dispose of them. \_\_\_\_\_

iv. Will there be onsite dewatering or processing of excavated materials?  Yes  No  
 If yes, describe. \_\_\_\_\_

v. What is the total area to be dredged or excavated? \_\_\_\_\_ acres

vi. What is the maximum area to be worked at any one time? \_\_\_\_\_ acres

vii. What would be the maximum depth of excavation or dredging? \_\_\_\_\_ feet

viii. Will the excavation require blasting?  Yes  No

ix. Summarize site reclamation goals and plan: \_\_\_\_\_

b. Would the proposed action cause or result in alteration of, increase or decrease in size of, or encroachment into any existing wetland, waterbody, shoreline, beach or adjacent area?  Yes  No  
 If Yes:

i. Identify the wetland or waterbody which would be affected (by name, water index number, wetland map number or geographic description): \_\_\_\_\_

ii. Describe how the proposed action would affect that waterbody or wetland, e.g. excavation, fill, placement of structures, or alteration of channels, banks and shorelines. Indicate extent of activities, alterations and additions in square feet or acres:

\_\_\_\_\_  
\_\_\_\_\_  
\_\_\_\_\_

iii. Will the proposed action cause or result in disturbance to bottom sediments?  Yes  No

If Yes, describe: \_\_\_\_\_

iv. Will the proposed action cause or result in the destruction or removal of aquatic vegetation?  Yes  No

If Yes: \_\_\_\_\_

- acres of aquatic vegetation proposed to be removed: \_\_\_\_\_
- expected acreage of aquatic vegetation remaining after project completion: \_\_\_\_\_
- purpose of proposed removal (e.g. beach clearing, invasive species control, boat access): \_\_\_\_\_
- proposed method of plant removal: \_\_\_\_\_
- if chemical/herbicide treatment will be used, specify product(s): \_\_\_\_\_

v. Describe any proposed reclamation/mitigation following disturbance: \_\_\_\_\_

c. Will the proposed action use, or create a new demand for water?  Yes  No

If Yes: \_\_\_\_\_

i. Total anticipated water usage/demand per day: \_\_\_\_\_ 28,910 gallons/day

ii. Will the proposed action obtain water from an existing public water supply?  Yes  No

If Yes: \_\_\_\_\_

- Name of district or service area: STAMP Site via agreement with Genesee County
- Does the existing public water supply have capacity to serve the proposal?  Yes  No
- Is the project site in the existing district?  Yes  No
- Is expansion of the district needed?  Yes  No
- Do existing lines serve the project site?  Yes  No

iii. Will line extension within an existing district be necessary to supply the project?  Yes  No

If Yes: \_\_\_\_\_

- Describe extensions or capacity expansions proposed to serve this project: \_\_\_\_\_  
New water line from Plug Power site to Site extended along Crosby Road.
- Source(s) of supply for the district: \_\_\_\_\_

iv. Is a new water supply district or service area proposed to be formed to serve the project site?  Yes  No

If Yes: \_\_\_\_\_

- Applicant/sponsor for new district: \_\_\_\_\_
- Date application submitted or anticipated: \_\_\_\_\_
- Proposed source(s) of supply for new district: \_\_\_\_\_

v. If a public water supply will not be used, describe plans to provide water supply for the project: \_\_\_\_\_

vi. If water supply will be from wells (public or private), what is the maximum pumping capacity: \_\_\_\_\_ gallons/minute.

d. Will the proposed action generate liquid wastes?  Yes  No

If Yes: \_\_\_\_\_

i. Total anticipated liquid waste generation per day: \_\_\_\_\_ 28,910 gallons/day

ii. Nature of liquid wastes to be generated (e.g., sanitary wastewater, industrial; if combination, describe all components and approximate volumes or proportions of each): \_\_\_\_\_  
Sanitary wastewater

iii. Will the proposed action use any existing public wastewater treatment facilities?  Yes  No

If Yes: \_\_\_\_\_

- Name of wastewater treatment plant to be used: \_\_\_\_\_
- Name of district: \_\_\_\_\_
- Does the existing wastewater treatment plant have capacity to serve the project?  Yes  No
- Is the project site in the existing district?  Yes  No
- Is expansion of the district needed?  Yes  No

• Do existing sewer lines serve the project site?  Yes  No  
 • Will a line extension within an existing district be necessary to serve the project?  Yes  No  
 If Yes:  
 • Describe extensions or capacity expansions proposed to serve this project: \_\_\_\_\_  
 Line extension to/from proposed STAMP WWTF. \_\_\_\_\_  
 \_\_\_\_\_

iv. Will a new wastewater (sewage) treatment district be formed to serve the project site?  Yes  No  
 If Yes:  
 • Applicant/sponsor for new district: \_\_\_\_\_  
 • Date application submitted or anticipated: \_\_\_\_\_  
 • What is the receiving water for the wastewater discharge? \_\_\_\_\_

v. If public facilities will not be used, describe plans to provide wastewater treatment for the project, including specifying proposed receiving water (name and classification if surface discharge or describe subsurface disposal plans):  
 GCEDC STAMP Wastewater Treatment Facility (pending) \_\_\_\_\_  
 \_\_\_\_\_

vi. Describe any plans or designs to capture, recycle or reuse liquid waste: \_\_\_\_\_  
 \_\_\_\_\_  
 \_\_\_\_\_

e. Will the proposed action disturb more than one acre and create stormwater runoff, either from new point sources (i.e. ditches, pipes, swales, curbs, gutters or other concentrated flows of stormwater) or non-point source (i.e. sheet flow) during construction or post construction?  Yes  No  
 If Yes:  
 i. How much impervious surface will the project create in relation to total size of project parcel?  
 991,561 Square feet or 22.76 acres (impervious surface)  
 3,820,212 Square feet or 87.7 acres (parcel size)  
 ii. Describe types of new point sources. Parking lots, internal roadways, concrete pads for equipment \_\_\_\_\_  
 \_\_\_\_\_

iii. Where will the stormwater runoff be directed (i.e. on-site stormwater management facility/structures, adjacent properties, groundwater, on-site surface water or off-site surface waters)?  
 Onsite stormwater management facility \_\_\_\_\_  
 \_\_\_\_\_

• If to surface waters, identify receiving water bodies or wetlands: \_\_\_\_\_  
 N/A, on-site stormwater management. \_\_\_\_\_  
 \_\_\_\_\_

• Will stormwater runoff flow to adjacent properties?  Yes  No

iv. Does the proposed plan minimize impervious surfaces, use pervious materials or collect and re-use stormwater?  Yes  No

f. Does the proposed action include, or will it use on-site, one or more sources of air emissions, including fuel combustion, waste incineration, or other processes or operations?  Yes  No  
 If Yes, identify:  
 i. Mobile sources during project operations (e.g., heavy equipment, fleet or delivery vehicles)  
 Trucks \_\_\_\_\_  
 ii. Stationary sources during construction (e.g., power generation, structural heating, batch plant, crushers)  
 \_\_\_\_\_  
 iii. Stationary sources during operations (e.g., process emissions, large boilers, electric generation)  
 \_\_\_\_\_

g. Will any air emission sources named in D.2.f (above), require a NY State Air Registration, Air Facility Permit, or Federal Clean Air Act Title IV or Title V Permit?  Yes  No  
 If Yes:  
 i. Is the project site located in an Air quality non-attainment area? (Area routinely or periodically fails to meet ambient air quality standards for all or some parts of the year)  Yes  No  
 ii. In addition to emissions as calculated in the application, the project will generate:  
 • \_\_\_\_\_ Tons/year (short tons) of Carbon Dioxide (CO<sub>2</sub>)  
 • \_\_\_\_\_ Tons/year (short tons) of Nitrous Oxide (N<sub>2</sub>O)  
 • \_\_\_\_\_ Tons/year (short tons) of Perfluorocarbons (PFCs)  
 • \_\_\_\_\_ Tons/year (short tons) of Sulfur Hexafluoride (SF<sub>6</sub>)  
 • \_\_\_\_\_ Tons/year (short tons) of Carbon Dioxide equivalent of Hydroflouorocarbons (HFCs)  
 • \_\_\_\_\_ Tons/year (short tons) of Hazardous Air Pollutants (HAPs)

h. Will the proposed action generate or emit methane (including, but not limited to, sewage treatment plants, landfills, composting facilities)?  Yes  No

If Yes:

i. Estimate methane generation in tons/year (metric): \_\_\_\_\_

ii. Describe any methane capture, control or elimination measures included in project design (e.g., combustion to generate heat or electricity, flaring): \_\_\_\_\_

---

i. Will the proposed action result in the release of air pollutants from open-air operations or processes, such as quarry or landfill operations?  Yes  No

If Yes: Describe operations and nature of emissions (e.g., diesel exhaust, rock particulates/dust): \_\_\_\_\_

---

j. Will the proposed action result in a substantial increase in traffic above present levels or generate substantial new demand for transportation facilities or services?  Yes  No

If Yes:

i. When is the peak traffic expected (Check all that apply):  Morning  Evening  Weekend  
 Randomly between hours of \_\_\_\_\_ to \_\_\_\_\_.

ii. For commercial activities only, projected number of truck trips/day and type (e.g., semi trailers and dump trucks): \_\_\_\_\_  
45-60 trucks per 100,000 square feet of building space.

iii. Parking spaces: Existing 0 Proposed 1/1,000 SF Net increase/decrease 991

iv. Does the proposed action include any shared use parking?  Yes  No

v. If the proposed action includes any modification of existing roads, creation of new roads or change in existing access, describe: Access and internal roads. \_\_\_\_\_

vi. Are public/private transportation service(s) or facilities available within 1/2 mile of the proposed site?  Yes  No

vii. Will the proposed action include access to public transportation or accommodations for use of hybrid, electric or other alternative fueled vehicles?  Yes  No

viii. Will the proposed action include plans for pedestrian or bicycle accommodations for connections to existing pedestrian or bicycle routes?  Yes  No

---

k. Will the proposed action (for commercial or industrial projects only) generate new or additional demand for energy?  Yes  No

If Yes:

i. Estimate annual electricity demand during operation of the proposed action: \_\_\_\_\_  
3-10 MW

ii. Anticipated sources/suppliers of electricity for the project (e.g., on-site combustion, on-site renewable, via grid/local utility, or other):  
New STAMP substation to be constructed

iii. Will the proposed action require a new, or an upgrade, to an existing substation?  Yes  No  
New STAMP substation to be constructed

---

l. Hours of operation. Answer all items which apply.

<p>i. During Construction:</p> <ul style="list-style-type: none"> <li>• Monday - Friday: <u>7:00 a.m. to 6:00 p.m.</u></li> <li>• Saturday: <u>7:00 a.m. to 6:00 p.m.</u></li> <li>• Sunday: <u>None</u></li> <li>• Holidays: <u>None</u></li> </ul>	<p>ii. During Operations:</p> <ul style="list-style-type: none"> <li>• Monday - Friday: <u>24 hours</u></li> <li>• Saturday: <u>24 hours</u></li> <li>• Sunday: <u>24 hours</u></li> <li>• Holidays: <u>24 hours</u></li> </ul>
--	---

m. Will the proposed action produce noise that will exceed existing ambient noise levels during construction, operation, or both?  Yes  No

If yes:

i. Provide details including sources, time of day and duration:  
 During construction, there will be construction noises as trucks enter and leave the Site and the building is constructed. During operation, noises will consist primarily of truck noises.

ii. Will the proposed action remove existing natural barriers that could act as a noise barrier or screen?  Yes  No  
 Describe: \_\_\_\_\_

---

n. Will the proposed action have outdoor lighting?  Yes  No

If yes:

i. Describe source(s), location(s), height of fixture(s), direction/aim, and proximity to nearest occupied structures:  
 Lighting fixtures will be downward facing, dark sky compliant.

ii. Will proposed action remove existing natural barriers that could act as a light barrier or screen?  Yes  No  
 Describe: Limited tree/shrub clearing may occur during construction

---

o. Does the proposed action have the potential to produce odors for more than one hour per day?  Yes  No  
 If Yes, describe possible sources, potential frequency and duration of odor emissions, and proximity to nearest occupied structures: \_\_\_\_\_

---

p. Will the proposed action include any bulk storage of petroleum (combined capacity of over 1,100 gallons) or chemical products 185 gallons in above ground storage or any amount in underground storage?  Yes  No

If Yes:

i. Product(s) to be stored \_\_\_\_\_

ii. Volume(s) \_\_\_\_\_ per unit time \_\_\_\_\_ (e.g., month, year)

iii. Generally, describe the proposed storage facilities: \_\_\_\_\_

---

q. Will the proposed action (commercial, industrial and recreational projects only) use pesticides (i.e., herbicides, insecticides) during construction or operation?  Yes  No

If Yes:

i. Describe proposed treatment(s):  
 \_\_\_\_\_  
 \_\_\_\_\_  
 \_\_\_\_\_

ii. Will the proposed action use Integrated Pest Management Practices?  Yes  No

---

r. Will the proposed action (commercial or industrial projects only) involve or require the management or disposal of solid waste (excluding hazardous materials)?  Yes  No

If Yes:

i. Describe any solid waste(s) to be generated during construction or operation of the facility:

- Construction: \_\_\_\_\_ tons per \_\_\_\_\_ (unit of time)
- Operation : \_\_\_\_\_ tons per \_\_\_\_\_ (unit of time)

ii. Describe any proposals for on-site minimization, recycling or reuse of materials to avoid disposal as solid waste:

- Construction: \_\_\_\_\_
- Operation: \_\_\_\_\_

iii. Proposed disposal methods/facilities for solid waste generated on-site:

- Construction: \_\_\_\_\_
- Operation: \_\_\_\_\_

s. Does the proposed action include construction or modification of a solid waste management facility?  Yes  No  
 If Yes:  
 i. Type of management or handling of waste proposed for the site (e.g., recycling or transfer station, composting, landfill, or other disposal activities): \_\_\_\_\_  
 ii. Anticipated rate of disposal/processing:  
 • \_\_\_\_\_ Tons/month, if transfer or other non-combustion/thermal treatment, or  
 • \_\_\_\_\_ Tons/hour, if combustion or thermal treatment  
 iii. If landfill, anticipated site life: \_\_\_\_\_ years

t. Will the proposed action at the site involve the commercial generation, treatment, storage, or disposal of hazardous waste?  Yes  No  
 If Yes:  
 i. Name(s) of all hazardous wastes or constituents to be generated, handled or managed at facility: \_\_\_\_\_  
 \_\_\_\_\_  
 ii. Generally describe processes or activities involving hazardous wastes or constituents: \_\_\_\_\_  
 \_\_\_\_\_  
 iii. Specify amount to be handled or generated \_\_\_\_\_ tons/month  
 iv. Describe any proposals for on-site minimization, recycling or reuse of hazardous constituents: \_\_\_\_\_  
 \_\_\_\_\_  
 v. Will any hazardous wastes be disposed at an existing offsite hazardous waste facility?  Yes  No  
 If Yes: provide name and location of facility: \_\_\_\_\_  
 \_\_\_\_\_  
 If No: describe proposed management of any hazardous wastes which will not be sent to a hazardous waste facility:  
 \_\_\_\_\_  
 \_\_\_\_\_

**E. Site and Setting of Proposed Action**

**E.1. Land uses on and surrounding the project site**

a. Existing land uses.  
 i. Check all uses that occur on, adjoining and near the project site.  
 Urban  Industrial  Commercial  Residential (suburban)  Rural (non-farm)  
 Forest  Agriculture  Aquatic  Other (specify): Tonawanda Seneca Nation Territory to west  
 ii. If mix of uses, generally describe:  
 \_\_\_\_\_  
 \_\_\_\_\_

b. Land uses and covertypes on the project site.

Land use or Coverture	Current Acreage	Acreage After Project Completion	Change (Acres +/-)
• Roads, buildings, and other paved or impervious surfaces	0	56	+56
• Forested	15	10	-5
• Meadows, grasslands or brushlands (non-agricultural, including abandoned agricultural)	47	26	-21
• Agricultural (includes active orchards, field, greenhouse etc.)	30	0	-30
• Surface water features (lakes, ponds, streams, rivers, etc.)	0	0	0
• Wetlands (freshwater or tidal)	0	0	0
• Non-vegetated (bare rock, earth or fill)	0	0	0
• Other Describe: _____ _____			

c. Is the project site presently used by members of the community for public recreation?  Yes  No  
i. If Yes: explain: \_\_\_\_\_

d. Are there any facilities serving children, the elderly, people with disabilities (e.g., schools, hospitals, licensed day care centers, or group homes) within 1500 feet of the project site?  Yes  No  
If Yes,  
i. Identify Facilities:  
\_\_\_\_\_

e. Does the project site contain an existing dam?  Yes  No  
If Yes:  
i. Dimensions of the dam and impoundment:  

- Dam height: \_\_\_\_\_ feet
- Dam length: \_\_\_\_\_ feet
- Surface area: \_\_\_\_\_ acres
- Volume impounded: \_\_\_\_\_ gallons OR acre-feet

ii. Dam's existing hazard classification: \_\_\_\_\_  
iii. Provide date and summarize results of last inspection:  
\_\_\_\_\_

f. Has the project site ever been used as a municipal, commercial or industrial solid waste management facility, or does the project site adjoin property which is now, or was at one time, used as a solid waste management facility?  Yes  No  
If Yes:  
i. Has the facility been formally closed?  Yes  No  

- If yes, cite sources/documentation: \_\_\_\_\_

ii. Describe the location of the project site relative to the boundaries of the solid waste management facility:  
\_\_\_\_\_  
\_\_\_\_\_  
iii. Describe any development constraints due to the prior solid waste activities: \_\_\_\_\_

g. Have hazardous wastes been generated, treated and/or disposed of at the site, or does the project site adjoin property which is now or was at one time used to commercially treat, store and/or dispose of hazardous waste?  Yes  No  
If Yes:  
i. Describe waste(s) handled and waste management activities, including approximate time when activities occurred:  
\_\_\_\_\_  
\_\_\_\_\_

h. Potential contamination history. Has there been a reported spill at the proposed project site, or have any remedial actions been conducted at or adjacent to the proposed site?  Yes  No  
If Yes:  
i. Is any portion of the site listed on the NYSDEC Spills Incidents database or Environmental Site Remediation database? Check all that apply:  Yes  No  
 Yes – Spills Incidents database Provide DEC ID number(s): 15105158  
 Yes – Environmental Site Remediation database Provide DEC ID number(s): \_\_\_\_\_  
 Neither database  
ii. If site has been subject of RCRA corrective activities, describe control measures: \_\_\_\_\_  
\_\_\_\_\_  
iii. Is the project within 2000 feet of any site in the NYSDEC Environmental Site Remediation database?  Yes  No  
If yes, provide DEC ID number(s): \_\_\_\_\_  
iv. If yes to (i), (ii) or (iii) above, describe current status of site(s):  
Record closed  
\_\_\_\_\_

v. Is the project site subject to an institutional control limiting property uses?  Yes  No

- If yes, DEC site ID number: \_\_\_\_\_
- Describe the type of institutional control (e.g., deed restriction or easement): \_\_\_\_\_
- Describe any use limitations: \_\_\_\_\_
- Describe any engineering controls: \_\_\_\_\_
- Will the project affect the institutional or engineering controls in place?  Yes  No
- Explain: \_\_\_\_\_  
 \_\_\_\_\_  
 \_\_\_\_\_

---

**E.2. Natural Resources On or Near Project Site**

a. What is the average depth to bedrock on the project site? \_\_\_\_\_ >6.5 feet

b. Are there bedrock outcroppings on the project site?  Yes  No  
 If Yes, what proportion of the site is comprised of bedrock outcroppings? \_\_\_\_\_ %

c. Predominant soil type(s) present on project site:

Odessa Silt Loam	_____	63 %
Lakemont Silty Clay	_____	14 %
Collomer Silt Loam	_____	12 %

d. What is the average depth to the water table on the project site? Average: \_\_\_\_\_ feet

e. Drainage status of project site soils:  Well Drained: \_\_\_\_\_ % of site  
 Moderately Well Drained: \_\_\_\_\_ 12 % of site  
 Poorly Drained \_\_\_\_\_ 88 % of site

f. Approximate proportion of proposed action site with slopes:  0-10%: \_\_\_\_\_ 100 % of site  
 10-15%: \_\_\_\_\_ % of site  
 15% or greater: \_\_\_\_\_ % of site

g. Are there any unique geologic features on the project site?  Yes  No  
 If Yes, describe: \_\_\_\_\_  
 \_\_\_\_\_

h. Surface water features.

i. Does any portion of the project site contain wetlands or other waterbodies (including streams, rivers, ponds or lakes)?  Yes  No

ii. Do any wetlands or other waterbodies adjoin the project site?  Yes  No

If Yes to either *i* or *ii*, continue. If No, skip to E.2.i.

iii. Are any of the wetlands or waterbodies within or adjoining the project site regulated by any federal, state or local agency?  Yes  No

iv. For each identified regulated wetland and waterbody on the project site, provide the following information:

- Streams: Name 847-687, 837-78 Classification C
- Lakes or Ponds: Name \_\_\_\_\_ Classification \_\_\_\_\_
- Wetlands: Name Federal Waters, Federal Waters, Federal Waters,... Approximate Size \_\_\_\_\_
- Wetland No. (if regulated by DEC) \_\_\_\_\_

v. Are any of the above water bodies listed in the most recent compilation of NYS water quality-impaired waterbodies?  Yes  No  
 If yes, name of impaired water body/bodies and basis for listing as impaired: \_\_\_\_\_  
 \_\_\_\_\_

---

i. Is the project site in a designated Floodway?  Yes  No

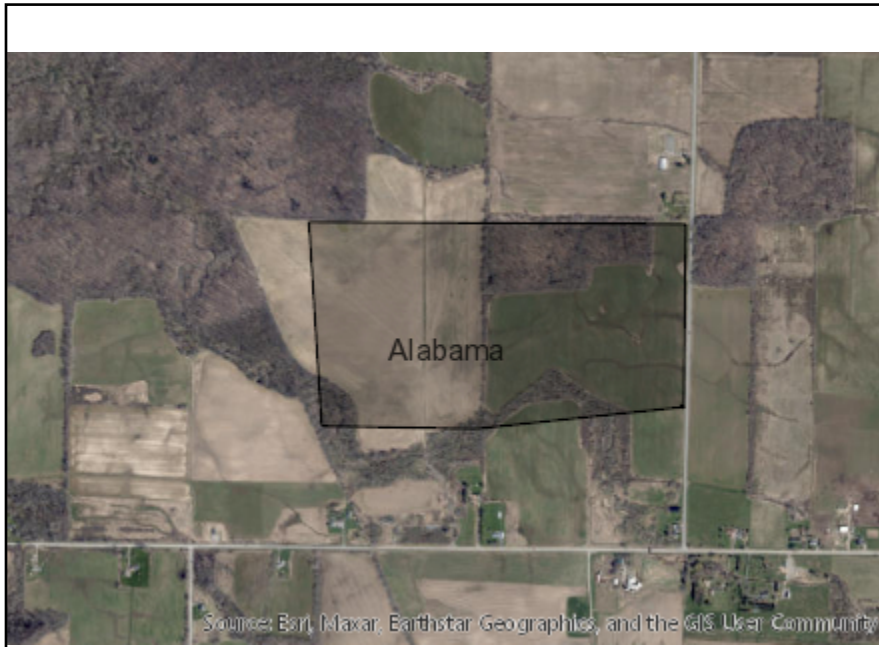
j. Is the project site in the 100-year Floodplain?  Yes  No

k. Is the project site in the 500-year Floodplain?  Yes  No

l. Is the project site located over, or immediately adjoining, a primary, principal or sole source aquifer?  Yes  No  
 If Yes:  
 i. Name of aquifer: \_\_\_\_\_

m. Identify the predominant wildlife species that occupy or use the project site: White-tailed deer _____ Squirrels and other mammals _____ Common songbirds _____ Short eared owl _____ Northern harrier _____	
n. Does the project site contain a designated significant natural community? <span style="float: right;"><input type="checkbox"/> Yes <input checked="" type="checkbox"/> No</span> If Yes: <i>i.</i> Describe the habitat/community (composition, function, and basis for designation): _____ <i>ii.</i> Source(s) of description or evaluation: _____ <i>iii.</i> Extent of community/habitat: • Currently: _____ acres • Following completion of project as proposed: _____ acres • Gain or loss (indicate + or -): _____ acres	
o. Does project site contain any species of plant or animal that is listed by the federal government or NYS as endangered or threatened, or does it contain any areas identified as habitat for an endangered or threatened species? <span style="float: right;"><input checked="" type="checkbox"/> Yes <input type="checkbox"/> No</span> If Yes: <i>i.</i> Species and listing (endangered or threatened): _____ Short-eared Owl, Northern Harrier	
p. Does the project site contain any species of plant or animal that is listed by NYS as rare, or as a species of special concern? <span style="float: right;"><input type="checkbox"/> Yes <input checked="" type="checkbox"/> No</span> If Yes: <i>i.</i> Species and listing: _____	
q. Is the project site or adjoining area currently used for hunting, trapping, fishing or shell fishing? <span style="float: right;"><input checked="" type="checkbox"/> Yes <input type="checkbox"/> No</span> If yes, give a brief description of how the proposed action may affect that use: _____ Hunting is prohibited on the STAMP site.	
<b>E.3. Designated Public Resources On or Near Project Site</b>	
a. Is the project site, or any portion of it, located in a designated agricultural district certified pursuant to Agriculture and Markets Law, Article 25-AA, Section 303 and 304? <span style="float: right;"><input type="checkbox"/> Yes <input checked="" type="checkbox"/> No</span> If Yes, provide county plus district name/number: GENE002	
b. Are agricultural lands consisting of highly productive soils present? <span style="float: right;"><input type="checkbox"/> Yes <input checked="" type="checkbox"/> No</span> <i>i.</i> If Yes: acreage(s) on project site? _____ <i>ii.</i> Source(s) of soil rating(s): _____	
c. Does the project site contain all or part of, or is it substantially contiguous to, a registered National Natural Landmark? <span style="float: right;"><input type="checkbox"/> Yes <input checked="" type="checkbox"/> No</span> If Yes: <i>i.</i> Nature of the natural landmark: <input type="checkbox"/> Biological Community <input type="checkbox"/> Geological Feature <i>ii.</i> Provide brief description of landmark, including values behind designation and approximate size/extent: _____ _____ _____	
d. Is the project site located in or does it adjoin a state listed Critical Environmental Area? <span style="float: right;"><input type="checkbox"/> Yes <input checked="" type="checkbox"/> No</span> If Yes: <i>i.</i> CEA name: _____ <i>ii.</i> Basis for designation: _____ <i>iii.</i> Designating agency and date: _____	





**Disclaimer:** The EAF Mapper is a screening tool intended to assist project sponsors and reviewing agencies in preparing an environmental assessment form (EAF). Not all questions asked in the EAF are answered by the EAF Mapper. Additional information on any EAF question can be obtained by consulting the EAF Workbooks. Although the EAF Mapper provides the most up-to-date digital data available to DEC, you may also need to contact local or other data sources in order to obtain data not provided by the Mapper. Digital data is not a substitute for agency determinations.



B.i.i [Coastal or Waterfront Area]	No
B.i.ii [Local Waterfront Revitalization Area]	No
C.2.b. [Special Planning District]	Digital mapping data are not available or are incomplete. Refer to EAF Workbook.
E.1.h [DEC Spills or Remediation Site - Potential Contamination History]	Digital mapping data are not available or are incomplete. Refer to EAF Workbook.
E.1.h.i [DEC Spills or Remediation Site - Listed]	Digital mapping data are not available or are incomplete. Refer to EAF Workbook.
E.1.h.i [DEC Spills or Remediation Site - Environmental Site Remediation Database]	Digital mapping data are not available or are incomplete. Refer to EAF Workbook.
E.1.h.iii [Within 2,000' of DEC Remediation Site]	No
E.2.g [Unique Geologic Features]	No
E.2.h.i [Surface Water Features]	Yes
E.2.h.ii [Surface Water Features]	Yes
E.2.h.iii [Surface Water Features]	Yes - Digital mapping information on local and federal wetlands and waterbodies is known to be incomplete. Refer to EAF Workbook.
E.2.h.iv [Surface Water Features - Stream Name]	847-687, 837-78
E.2.h.iv [Surface Water Features - Stream Classification]	C
E.2.h.iv [Surface Water Features - Wetlands Name]	Federal Waters
E.2.h.v [Impaired Water Bodies]	No
E.2.i. [Floodway]	Digital mapping data are not available or are incomplete. Refer to EAF Workbook.
E.2.j. [100 Year Floodplain]	Digital mapping data are not available or are incomplete. Refer to EAF Workbook.

E.2.k. [500 Year Floodplain]	Digital mapping data are not available or are incomplete. Refer to EAF Workbook.
E.2.l. [Aquifers]	No
E.2.n. [Natural Communities]	No
E.2.o. [Endangered or Threatened Species]	Yes
E.2.o. [Endangered or Threatened Species - Name]	Short-eared Owl, Northern Harrier
E.2.p. [Rare Plants or Animals]	No
E.3.a. [Agricultural District]	Yes
E.3.a. [Agricultural District]	GENE002
E.3.c. [National Natural Landmark]	No
E.3.d [Critical Environmental Area]	No
E.3.e. [National or State Register of Historic Places or State Eligible Sites]	Digital mapping data are not available or are incomplete. Refer to EAF Workbook.
E.3.f. [Archeological Sites]	Yes
E.3.i. [Designated River Corridor]	No

# Exhibit D

**Full Environmental Assessment Form  
Part 1 - Project and Setting**

**Instructions for Completing Part 1**

**Part 1 is to be completed by the applicant or project sponsor.** Responses become part of the application for approval or funding, are subject to public review, and may be subject to further verification.

Complete Part 1 based on information currently available. If additional research or investigation would be needed to fully respond to any item, please answer as thoroughly as possible based on current information; indicate whether missing information does not exist, or is not reasonably available to the sponsor; and, when possible, generally describe work or studies which would be necessary to update or fully develop that information.

Applicants/sponsors must complete all items in Sections A & B. In Sections C, D & E, most items contain an initial question that must be answered either "Yes" or "No". If the answer to the initial question is "Yes", complete the sub-questions that follow. If the answer to the initial question is "No", proceed to the next question. Section F allows the project sponsor to identify and attach any additional information. Section G requires the name and signature of the applicant or project sponsor to verify that the information contained in Part 1 is accurate and complete.

**A. Project and Applicant/Sponsor Information.**

Name of Action or Project: STAMP Onsite Infrastructure		
Project Location (describe, and attach a general location map): Crosby Road, STAMP Drive, Future Bypass Roads Town of Alabama, Genesee County		
Brief Description of Proposed Action (include purpose or need): This project involves the development of supporting infrastructure at the STAMP site. Onsite infrastructure improvements includes the following supporting infrastructure. <ul style="list-style-type: none"> <li>- Reconstruction of Crosby Road and the construction of bypass roads and connector roads on the STAMP site.</li> <li>- Onsite Niagara County water supply, including water storage tanks throughout the STAMP site.</li> <li>- A combination of gravity sanitary sewer, force mains and pump stations to support development along Crosby Road, STAMP Drive and the proposed bypass roads to convey sanitary sewer to the proposed Wastewater Treatment Facility.</li> <li>- A combination of gravity, force mains and pump stations to support development along Crosby Road to convey treated process water to the proposed Main Pump Station.</li> <li>- Onsite 115 kV electric services to each development</li> <li>- Onsite natural gas services to each development</li> </ul>		
Name of Applicant/Sponsor: Genesee County Economic Development Center	Telephone: (585) 343-4866	
	E-Mail: mmasse@gcedc.com	
Address: 99 MedTech Drive, Suite 106		
City/PO: Batavia	State: NY	Zip Code: 14020
Project Contact (if not same as sponsor; give name and title/role): Mark Masse, Sr. V.P. of Operations	Telephone: (585) 343-4866, ext. 17	
	E-Mail:	
Address: 99 MedTech Drive, Suite 106		
City/PO: Batavia	State: NY	Zip Code: 14020
Property Owner (if not same as sponsor):	Telephone: (585) 343-4866, ext. 17	
	E-Mail: mmasse@gcedc.com	
Address:		
City/PO:	State:	Zip Code:

**B. Government Approvals**

<b>B. Government Approvals, Funding, or Sponsorship.</b> (“Funding” includes grants, loans, tax relief, and any other forms of financial assistance.)		
<b>Government Entity</b>	<b>If Yes: Identify Agency and Approval(s) Required</b>	<b>Application Date (Actual or projected)</b>
a. City Counsel, Town Board, <input type="checkbox"/> Yes <input checked="" type="checkbox"/> No or Village Board of Trustees		
b. City, Town or Village Planning Board or Commission <input checked="" type="checkbox"/> Yes <input type="checkbox"/> No	Town of Alabama	March 2023
c. City, Town or Village Zoning Board of Appeals <input type="checkbox"/> Yes <input checked="" type="checkbox"/> No		
d. Other local agencies <input type="checkbox"/> Yes <input checked="" type="checkbox"/> No		March
e. County agencies <input checked="" type="checkbox"/> Yes <input type="checkbox"/> No	Genesee County Planning Department	March 2023
f. Regional agencies <input checked="" type="checkbox"/> Yes <input type="checkbox"/> No	Empire State Development funding	March 2023
g. State agencies <input checked="" type="checkbox"/> Yes <input type="checkbox"/> No	NYS DEC freshwater wetlands permit, NYSDEC SWPPP, Genesee County Highway Work Permit	March 2023
h. Federal agencies <input checked="" type="checkbox"/> Yes <input type="checkbox"/> No	US Army Corps of Engineers NWP	March 2023
i. Coastal Resources.		
i. Is the project site within a Coastal Area, or the waterfront area of a Designated Inland Waterway?		<input type="checkbox"/> Yes <input checked="" type="checkbox"/> No
ii. Is the project site located in a community with an approved Local Waterfront Revitalization Program?		<input type="checkbox"/> Yes <input checked="" type="checkbox"/> No
iii. Is the project site within a Coastal Erosion Hazard Area?		<input type="checkbox"/> Yes <input checked="" type="checkbox"/> No

**C. Planning and Zoning**

<b>C.1. Planning and zoning actions.</b>	
Will administrative or legislative adoption, or amendment of a plan, local law, ordinance, rule or regulation be the only approval(s) which must be granted to enable the proposed action to proceed?	<input type="checkbox"/> Yes <input checked="" type="checkbox"/> No
<ul style="list-style-type: none"> <li>• <b>If Yes</b>, complete sections C, F and G.</li> <li>• <b>If No</b>, proceed to question C.2 and complete all remaining sections and questions in Part 1</li> </ul>	
<b>C.2. Adopted land use plans.</b>	
a. Do any municipally- adopted (city, town, village or county) comprehensive land use plan(s) include the site where the proposed action would be located?	<input checked="" type="checkbox"/> Yes <input type="checkbox"/> No
If Yes, does the comprehensive plan include specific recommendations for the site where the proposed action would be located?	<input checked="" type="checkbox"/> Yes <input type="checkbox"/> No
b. Is the site of the proposed action within any local or regional special planning district (for example: Greenway; Brownfield Opportunity Area (BOA); designated State or Federal heritage area; watershed management plan; or other?)	<input type="checkbox"/> Yes <input checked="" type="checkbox"/> No
If Yes, identify the plan(s):	
_____	
_____	
_____	
c. Is the proposed action located wholly or partially within an area listed in an adopted municipal open space plan, or an adopted municipal farmland protection plan?	<input checked="" type="checkbox"/> Yes <input type="checkbox"/> No
If Yes, identify the plan(s):	
Genesee County Smart Growth	
_____	
_____	

**C.3. Zoning**

a. Is the site of the proposed action located in a municipality with an adopted zoning law or ordinance.  Yes  No  
If Yes, what is the zoning classification(s) including any applicable overlay district?  
STAMP Tech District 1 (TD1), STAMP Tech District 2 (TD2), STAMP Tech District 3 (TD3)

b. Is the use permitted or allowed by a special or conditional use permit?  Yes  No

c. Is a zoning change requested as part of the proposed action?  Yes  No  
If Yes,  
i. What is the proposed new zoning for the site? \_\_\_\_\_

**C.4. Existing community services.**

a. In what school district is the project site located? Oakfield-Alabama Central School District

b. What police or other public protection forces serve the project site?  
Genesee County Sheriff

c. Which fire protection and emergency medical services serve the project site?  
Town of Alabama Fire Department, Genesee County Emergency Management Services, Mercy Flight Service

d. What parks serve the project site?  
N/A

**D. Project Details**

**D.1. Proposed and Potential Development**

a. What is the general nature of the proposed action (e.g., residential, industrial, commercial, recreational; if mixed, include all components)? industrial, commercial, municipal

b. a. Total acreage of the site of the proposed action? approx. 1,292 acres  
b. Total acreage to be physically disturbed? approx. 72 acres  
c. Total acreage (project site and any contiguous properties) owned or controlled by the applicant or project sponsor? approx. 1,292 acres

c. Is the proposed action an expansion of an existing project or use?  Yes  No  
i. If Yes, what is the approximate percentage of the proposed expansion and identify the units (e.g., acres, miles, housing units, square feet)? % \_\_\_\_\_ Units: \_\_\_\_\_

d. Is the proposed action a subdivision, or does it include a subdivision?  Yes  No  
If Yes,  
i. Purpose or type of subdivision? (e.g., residential, industrial, commercial; if mixed, specify types)  
municipal services  
ii. Is a cluster/conservation layout proposed?  Yes  No  
iii. Number of lots proposed? 3  
iv. Minimum and maximum proposed lot sizes? Minimum 0.1 Maximum 2

e. Will the proposed action be constructed in multiple phases?  Yes  No  
i. If No, anticipated period of construction: \_\_\_\_\_ months  
ii. If Yes:  
• Total number of phases anticipated 6  
• Anticipated commencement date of phase 1 (including demolition) 1 month 2023 year  
• Anticipated completion date of final phase 12 month 2025 year  
• Generally describe connections or relationships among phases, including any contingencies where progress of one phase may determine timing or duration of future phases: \_\_\_\_\_

Each phase of construction is independent of the other and may begin at any time. Some phases may be delayed depending on the development progress at the STAMP site.

f. Does the project include new residential uses?  Yes  No  
 If Yes, show numbers of units proposed.

	<u>One Family</u>	<u>Two Family</u>	<u>Three Family</u>	<u>Multiple Family (four or more)</u>
Initial Phase	_____	_____	_____	_____
At completion of all phases	_____	_____	_____	_____

g. Does the proposed action include new non-residential construction (including expansions)?  Yes  No  
 If Yes,

i. Total number of structures 5+

ii. Dimensions (in feet) of largest proposed structure: 40 height; 110 width; and 110 length

iii. Approximate extent of building space to be heated or cooled: 5,000 square feet

h. Does the proposed action include construction or other activities that will result in the impoundment of any liquids, such as creation of a water supply, reservoir, pond, lake, waste lagoon or other storage?  Yes  No  
 If Yes,

i. Purpose of the impoundment: Stormwater management

ii. If a water impoundment, the principal source of the water:  Ground water  Surface water streams  Other specify: Stormwater management

iii. If other than water, identify the type of impounded/contained liquids and their source.  
N/A

iv. Approximate size of the proposed impoundment. Volume: 0.500 million gallons; surface area: 2.0 acres

v. Dimensions of the proposed dam or impounding structure: 6 height; 500 length

vi. Construction method/materials for the proposed dam or impounding structure (e.g., earth fill, rock, wood, concrete):  
Earth Fill

**D.2. Project Operations**

a. Does the proposed action include any excavation, mining, or dredging, during construction, operations, or both?  Yes  No  
 (Not including general site preparation, grading or installation of utilities or foundations where all excavated materials will remain onsite)

If Yes:

i. What is the purpose of the excavation or dredging? \_\_\_\_\_

ii. How much material (including rock, earth, sediments, etc.) is proposed to be removed from the site?

- Volume (specify tons or cubic yards): \_\_\_\_\_
- Over what duration of time? \_\_\_\_\_

iii. Describe nature and characteristics of materials to be excavated or dredged, and plans to use, manage or dispose of them.  
 \_\_\_\_\_

iv. Will there be onsite dewatering or processing of excavated materials?  Yes  No  
 If yes, describe. \_\_\_\_\_

v. What is the total area to be dredged or excavated? \_\_\_\_\_ acres

vi. What is the maximum area to be worked at any one time? \_\_\_\_\_ acres

vii. What would be the maximum depth of excavation or dredging? \_\_\_\_\_ feet

viii. Will the excavation require blasting?  Yes  No

ix. Summarize site reclamation goals and plan: \_\_\_\_\_  
 \_\_\_\_\_

b. Would the proposed action cause or result in alteration of, increase or decrease in size of, or encroachment into any existing wetland, waterbody, shoreline, beach or adjacent area?  Yes  No  
 If Yes:

i. Identify the wetland or waterbody which would be affected (by name, water index number, wetland map number or geographic description): Unnamed tributaries to Whitney Creek and Oak Orchard Creek, Trib 3

ii. Describe how the proposed action would affect that waterbody or wetland, e.g. excavation, fill, placement of structures, or alteration of channels, banks and shorelines. Indicate extent of activities, alterations and additions in square feet or acres:  
Existing culvert crossing replacement along Crosby Road.  
Non-jurisdictional wetlands will be filled to promote development.

iii. Will the proposed action cause or result in disturbance to bottom sediments?  Yes  No  
If Yes, describe: Trib 3 will be routed through a rebuilt culvert.

iv. Will the proposed action cause or result in the destruction or removal of aquatic vegetation?  Yes  No  
If Yes:  
• acres of aquatic vegetation proposed to be removed: \_\_\_\_\_  
• expected acreage of aquatic vegetation remaining after project completion: \_\_\_\_\_  
• purpose of proposed removal (e.g. beach clearing, invasive species control, boat access): \_\_\_\_\_  
Stream reroute, establishment of the channel  
• proposed method of plant removal: excavation  
• if chemical/herbicide treatment will be used, specify product(s): N/A

v. Describe any proposed reclamation/mitigation following disturbance: \_\_\_\_\_  
planting wetland and stream bank seed mixes in any disturbed areas of the channel

c. Will the proposed action use, or create a new demand for water?  Yes  No  
If Yes:  
i. Total anticipated water usage/demand per day: \_\_\_\_\_ 6,000,000 gallons/day

ii. Will the proposed action obtain water from an existing public water supply?  Yes  No  
If Yes:  
• Name of district or service area: Niagara County, Town of Alabama  
• Does the existing public water supply have capacity to serve the proposal?  Yes  No  
• Is the project site in the existing district?  Yes  No  
• Is expansion of the district needed?  Yes  No  
• Do existing lines serve the project site?  Yes  No

iii. Will line extension within an existing district be necessary to supply the project?  Yes  No  
If Yes:  
• Describe extensions or capacity expansions proposed to serve this project: \_\_\_\_\_  
12-inch or 16-inch water main along Crosby Road and proposed bypass roads, Onsite water storage tanks  
• Source(s) of supply for the district: Niagara County, Town of Oakfield

iv. Is a new water supply district or service area proposed to be formed to serve the project site?  Yes  No  
If Yes:  
• Applicant/sponsor for new district: \_\_\_\_\_  
• Date application submitted or anticipated: \_\_\_\_\_  
• Proposed source(s) of supply for new district: \_\_\_\_\_

v. If a public water supply will not be used, describe plans to provide water supply for the project: \_\_\_\_\_  
N/A

vi. If water supply will be from wells (public or private), what is the maximum pumping capacity: \_\_\_\_\_ N/A gallons/minute.

d. Will the proposed action generate liquid wastes?  Yes  No  
If Yes:  
i. Total anticipated liquid waste generation per day: \_\_\_\_\_ 1,000,000 gallons/day  
ii. Nature of liquid wastes to be generated (e.g., sanitary wastewater, industrial; if combination, describe all components and approximate volumes or proportions of each): \_\_\_\_\_  
Sanitary sewer and commercial/ industrial process water

iii. Will the proposed action use any existing public wastewater treatment facilities?  Yes  No  
If Yes:  
• Name of wastewater treatment plant to be used: STAMP Onsite WWTF  
• Name of district: STAMP  
• Does the existing wastewater treatment plant have capacity to serve the project?  Yes  No  
• Is the project site in the existing district?  Yes  No  
• Is expansion of the district needed?  Yes  No

• Do existing sewer lines serve the project site?  Yes  No  
 • Will a line extension within an existing district be necessary to serve the project?  Yes  No  
 If Yes:  
 • Describe extensions or capacity expansions proposed to serve this project: \_\_\_\_\_  
 12-inch sanitary sewer gravity, and 6-inch or 8-inch force main to convey sanitary sewer to the STAMP WWTF  
 24-inch process water gravity main, 8-inch or 12-inch force main to convey process water to the STAMP WWTF

iv. Will a new wastewater (sewage) treatment district be formed to serve the project site?  Yes  No  
 If Yes:  
 • Applicant/sponsor for new district: \_\_\_\_\_  
 • Date application submitted or anticipated: \_\_\_\_\_  
 • What is the receiving water for the wastewater discharge? \_\_\_\_\_

v. If public facilities will not be used, describe plans to provide wastewater treatment for the project, including specifying proposed receiving water (name and classification if surface discharge or describe subsurface disposal plans):  
 \_\_\_\_\_  
 \_\_\_\_\_

vi. Describe any plans or designs to capture, recycle or reuse liquid waste: \_\_\_\_\_  
 \_\_\_\_\_  
 \_\_\_\_\_

e. Will the proposed action disturb more than one acre and create stormwater runoff, either from new point sources (i.e. ditches, pipes, swales, curbs, gutters or other concentrated flows of stormwater) or non-point source (i.e. sheet flow) during construction or post construction?  Yes  No  
 If Yes:  
 i. How much impervious surface will the project create in relation to total size of project parcel?  
 \_\_\_\_\_ Square feet or \_\_\_\_\_ 7 acres (impervious surface)  
 \_\_\_\_\_ Square feet or \_\_\_\_\_ 1292 acres (parcel size)  
 ii. Describe types of new point sources: roof tops, water storage tanks, roads and driveways  
 \_\_\_\_\_  
 \_\_\_\_\_

iii. Where will the stormwater runoff be directed (i.e. on-site stormwater management facility/structures, adjacent properties, groundwater, on-site surface water or off-site surface waters)?  
 Onsite stormwater management facility  
 \_\_\_\_\_  
 \_\_\_\_\_

• If to surface waters, identify receiving water bodies or wetlands: \_\_\_\_\_  
 Onsite wetlands, unnamed tributaries to Whitney Creek and Oak Orchard Creek  
 \_\_\_\_\_  
 \_\_\_\_\_

• Will stormwater runoff flow to adjacent properties?  Yes  No

iv. Does the proposed plan minimize impervious surfaces, use pervious materials or collect and re-use stormwater?  Yes  No

f. Does the proposed action include, or will it use on-site, one or more sources of air emissions, including fuel combustion, waste incineration, or other processes or operations?  Yes  No  
 If Yes, identify:  
 i. Mobile sources during project operations (e.g., heavy equipment, fleet or delivery vehicles)  
 construction equipment, truck delivery and shipment traffic  
 ii. Stationary sources during construction (e.g., power generation, structural heating, batch plant, crushers)  
 \_\_\_\_\_  
 iii. Stationary sources during operations (e.g., process emissions, large boilers, electric generation)  
 \_\_\_\_\_

g. Will any air emission sources named in D.2.f (above), require a NY State Air Registration, Air Facility Permit, or Federal Clean Air Act Title IV or Title V Permit?  Yes  No  
 If Yes:  
 i. Is the project site located in an Air quality non-attainment area? (Area routinely or periodically fails to meet ambient air quality standards for all or some parts of the year)  Yes  No  
 ii. In addition to emissions as calculated in the application, the project will generate:  
 • \_\_\_\_\_ Tons/year (short tons) of Carbon Dioxide (CO<sub>2</sub>)  
 • \_\_\_\_\_ Tons/year (short tons) of Nitrous Oxide (N<sub>2</sub>O)  
 • \_\_\_\_\_ Tons/year (short tons) of Perfluorocarbons (PFCs)  
 • \_\_\_\_\_ Tons/year (short tons) of Sulfur Hexafluoride (SF<sub>6</sub>)  
 • \_\_\_\_\_ Tons/year (short tons) of Carbon Dioxide equivalent of Hydroflouorocarbons (HFCs)  
 • \_\_\_\_\_ Tons/year (short tons) of Hazardous Air Pollutants (HAPs)

h. Will the proposed action generate or emit methane (including, but not limited to, sewage treatment plants, landfills, composting facilities)?  Yes  No

If Yes:

i. Estimate methane generation in tons/year (metric): \_\_\_\_\_

ii. Describe any methane capture, control or elimination measures included in project design (e.g., combustion to generate heat or electricity, flaring): \_\_\_\_\_

---

i. Will the proposed action result in the release of air pollutants from open-air operations or processes, such as quarry or landfill operations?  Yes  No

If Yes: Describe operations and nature of emissions (e.g., diesel exhaust, rock particulates/dust): \_\_\_\_\_

---

j. Will the proposed action result in a substantial increase in traffic above present levels or generate substantial new demand for transportation facilities or services?  Yes  No

If Yes:

i. When is the peak traffic expected (Check all that apply):  Morning  Evening  Weekend  
 Randomly between hours of  N/A  to  N/A .

ii. For commercial activities only, projected number of truck trips/day and type (e.g., semi trailers and dump trucks): \_\_\_\_\_  
N/A

iii. Parking spaces: Existing  N/A  Proposed  N/A  Net increase/decrease  N/A

iv. Does the proposed action include any shared use parking?  Yes  No

v. If the proposed action includes any modification of existing roads, creation of new roads or change in existing access, describe:  
Reconstruction and widening of Crosby Road

vi. Are public/private transportation service(s) or facilities available within 1/2 mile of the proposed site?  Yes  No

vii. Will the proposed action include access to public transportation or accommodations for use of hybrid, electric or other alternative fueled vehicles?  Yes  No

viii. Will the proposed action include plans for pedestrian or bicycle accommodations for connections to existing pedestrian or bicycle routes?  Yes  No

---

k. Will the proposed action (for commercial or industrial projects only) generate new or additional demand for energy?  Yes  No

If Yes:

i. Estimate annual electricity demand during operation of the proposed action: \_\_\_\_\_

ii. Anticipated sources/suppliers of electricity for the project (e.g., on-site combustion, on-site renewable, via grid/local utility, or other): \_\_\_\_\_

iii. Will the proposed action require a new, or an upgrade, to an existing substation?  Yes  No

---

l. Hours of operation. Answer all items which apply.

i. During Construction:

- Monday - Friday:  7 am - 7 pm
- Saturday:  7 am - 7 pm
- Sunday:  7 am - 7 pm
- Holidays:  7 am - 7 pm

ii. During Operations:

- Monday - Friday:  24 hrs
- Saturday:  24 hrs
- Sunday:  24 hrs
- Holidays:  24 hrs

m. Will the proposed action produce noise that will exceed existing ambient noise levels during construction, operation, or both?  Yes  No

If yes:

i. Provide details including sources, time of day and duration:  
 The existing landscape includes agricultural and residential properties. The proposed projects will create roads and industrial support infrastructure.

---

ii. Will the proposed action remove existing natural barriers that could act as a noise barrier or screen?  Yes  No  
 Describe: \_\_\_\_\_

---

n. Will the proposed action have outdoor lighting?  Yes  No

If yes:

i. Describe source(s), location(s), height of fixture(s), direction/aim, and proximity to nearest occupied structures:  
 Water storage tanks and pump stations will included safety and security lighting. Fixtures will be mounted between 8 ft and 16 ft above grade. Fixtures will be from 500' to 3,000' away from any existing structures.

---

ii. Will proposed action remove existing natural barriers that could act as a light barrier or screen?  Yes  No  
 Describe: \_\_\_\_\_

---

o. Does the proposed action have the potential to produce odors for more than one hour per day?  Yes  No  
 If Yes, describe possible sources, potential frequency and duration of odor emissions, and proximity to nearest occupied structures: \_\_\_\_\_

---

p. Will the proposed action include any bulk storage of petroleum (combined capacity of over 1,100 gallons) or chemical products 185 gallons in above ground storage or any amount in underground storage?  Yes  No

If Yes:

i. Product(s) to be stored \_\_\_\_\_

ii. Volume(s) \_\_\_\_\_ per unit time \_\_\_\_\_ (e.g., month, year)

iii. Generally, describe the proposed storage facilities: \_\_\_\_\_

---

q. Will the proposed action (commercial, industrial and recreational projects only) use pesticides (i.e., herbicides, insecticides) during construction or operation?  Yes  No

If Yes:

i. Describe proposed treatment(s):  
 \_\_\_\_\_

---

ii. Will the proposed action use Integrated Pest Management Practices?  Yes  No

---

r. Will the proposed action (commercial or industrial projects only) involve or require the management or disposal of solid waste (excluding hazardous materials)?  Yes  No

If Yes:

i. Describe any solid waste(s) to be generated during construction or operation of the facility:

- Construction: \_\_\_\_\_ 1 tons per \_\_\_\_\_ week (unit of time)
- Operation : \_\_\_\_\_ 2 tons per \_\_\_\_\_ week (unit of time)

ii. Describe any proposals for on-site minimization, recycling or reuse of materials to avoid disposal as solid waste:

- Construction: \_\_\_\_\_
- Operation: \_\_\_\_\_

iii. Proposed disposal methods/facilities for solid waste generated on-site:

- Construction: Land fill \_\_\_\_\_
- Operation: Land fill \_\_\_\_\_

s. Does the proposed action include construction or modification of a solid waste management facility?  Yes  No

If Yes:

i. Type of management or handling of waste proposed for the site (e.g., recycling or transfer station, composting, landfill, or other disposal activities): \_\_\_\_\_

ii. Anticipated rate of disposal/processing:

- \_\_\_\_\_ Tons/month, if transfer or other non-combustion/thermal treatment, or
- \_\_\_\_\_ Tons/hour, if combustion or thermal treatment

iii. If landfill, anticipated site life: \_\_\_\_\_ years

---

t. Will the proposed action at the site involve the commercial generation, treatment, storage, or disposal of hazardous waste?  Yes  No

If Yes:

i. Name(s) of all hazardous wastes or constituents to be generated, handled or managed at facility: \_\_\_\_\_

ii. Generally describe processes or activities involving hazardous wastes or constituents: \_\_\_\_\_

iii. Specify amount to be handled or generated \_\_\_\_\_ tons/month

iv. Describe any proposals for on-site minimization, recycling or reuse of hazardous constituents: \_\_\_\_\_

v. Will any hazardous wastes be disposed at an existing offsite hazardous waste facility?  Yes  No

If Yes: provide name and location of facility: \_\_\_\_\_

If No: describe proposed management of any hazardous wastes which will not be sent to a hazardous waste facility: \_\_\_\_\_

**E. Site and Setting of Proposed Action**

**E.1. Land uses on and surrounding the project site**

a. Existing land uses.

i. Check all uses that occur on, adjoining and near the project site.

- Urban  Industrial  Commercial  Residential (suburban)  Rural (non-farm)
- Forest  Agriculture  Aquatic  Other (specify): \_\_\_\_\_

ii. If mix of uses, generally describe: \_\_\_\_\_

b. Land uses and covertypes on the project site.

Land use or Covertypes	Current Acreage	Acreage After Project Completion	Change (Acres +/-)
• Roads, buildings, and other paved or impervious surfaces	8.4	23.4	+15.0
• Forested	196.7	195.4	-1.3
• Meadows, grasslands or brushlands (non-agricultural, including abandoned agricultural)	194.5	194.0	-0.5
• Agricultural (includes active orchards, field, greenhouse etc.)	736.5	718.0	-18.5
• Surface water features (lakes, ponds, streams, rivers, etc.)	1.6	3.2	1.6
• Wetlands (freshwater or tidal)	3.6	3.3	-0.3
• Non-vegetated (bare rock, earth or fill)	0		
• Other Describe: <u>Developed/ Industrial</u>	150.7	154.7	+4.0

c. Is the project site presently used by members of the community for public recreation?  Yes  No  
 i. If Yes: explain: \_\_\_\_\_

d. Are there any facilities serving children, the elderly, people with disabilities (e.g., schools, hospitals, licensed day care centers, or group homes) within 1500 feet of the project site?  Yes  No  
 If Yes,  
 i. Identify Facilities: \_\_\_\_\_

e. Does the project site contain an existing dam?  Yes  No  
 If Yes:  
 i. Dimensions of the dam and impoundment:  
 • Dam height: \_\_\_\_\_ feet  
 • Dam length: \_\_\_\_\_ feet  
 • Surface area: \_\_\_\_\_ acres  
 • Volume impounded: \_\_\_\_\_ gallons OR acre-feet  
 ii. Dam's existing hazard classification: \_\_\_\_\_  
 iii. Provide date and summarize results of last inspection: \_\_\_\_\_

f. Has the project site ever been used as a municipal, commercial or industrial solid waste management facility, or does the project site adjoin property which is now, or was at one time, used as a solid waste management facility?  Yes  No  
 If Yes:  
 i. Has the facility been formally closed?  Yes  No  
 • If yes, cite sources/documentation: \_\_\_\_\_  
 ii. Describe the location of the project site relative to the boundaries of the solid waste management facility: \_\_\_\_\_  
 iii. Describe any development constraints due to the prior solid waste activities: \_\_\_\_\_

g. Have hazardous wastes been generated, treated and/or disposed of at the site, or does the project site adjoin property which is now or was at one time used to commercially treat, store and/or dispose of hazardous waste?  Yes  No  
 If Yes:  
 i. Describe waste(s) handled and waste management activities, including approximate time when activities occurred: \_\_\_\_\_

h. Potential contamination history. Has there been a reported spill at the proposed project site, or have any remedial actions been conducted at or adjacent to the proposed site?  Yes  No  
 If Yes:  
 i. Is any portion of the site listed on the NYSDEC Spills Incidents database or Environmental Site Remediation database? Check all that apply:  Yes  No  
 Yes – Spills Incidents database Provide DEC ID number(s): 9607396  
 Yes – Environmental Site Remediation database Provide DEC ID number(s): \_\_\_\_\_  
 Neither database  
 ii. If site has been subject of RCRA corrective activities, describe control measures: \_\_\_\_\_  
 iii. Is the project within 2000 feet of any site in the NYSDEC Environmental Site Remediation database?  Yes  No  
 If yes, provide DEC ID number(s): \_\_\_\_\_  
 iv. If yes to (i), (ii) or (iii) above, describe current status of site(s): \_\_\_\_\_

v. Is the project site subject to an institutional control limiting property uses?  Yes  No

- If yes, DEC site ID number: \_\_\_\_\_
- Describe the type of institutional control (e.g., deed restriction or easement): \_\_\_\_\_
- Describe any use limitations: \_\_\_\_\_
- Describe any engineering controls: \_\_\_\_\_
- Will the project affect the institutional or engineering controls in place?  Yes  No
- Explain: \_\_\_\_\_

**E.2. Natural Resources On or Near Project Site**

a. What is the average depth to bedrock on the project site? \_\_\_\_\_ 30+ feet

b. Are there bedrock outcroppings on the project site?  Yes  No  
 If Yes, what proportion of the site is comprised of bedrock outcroppings? \_\_\_\_\_ %

c. Predominant soil type(s) present on project site:

Odessa Silt Loam	_____	35.3 %
Lakemont Silty Clay	_____	9.7 %
Collamer Silt Loam	_____	9.6 %

d. What is the average depth to the water table on the project site? Average: \_\_\_\_\_ +/- 1 feet

e. Drainage status of project site soils:  Well Drained: \_\_\_\_\_ 4.1 % of site  
 Moderately Well Drained: \_\_\_\_\_ 1.1 % of site  
 Poorly Drained \_\_\_\_\_ 94.1 % of site

f. Approximate proportion of proposed action site with slopes:  0-10%: \_\_\_\_\_ 100 % of site  
 10-15%: \_\_\_\_\_ % of site  
 15% or greater: \_\_\_\_\_ % of site

g. Are there any unique geologic features on the project site?  Yes  No  
 If Yes, describe: \_\_\_\_\_

h. Surface water features.

i. Does any portion of the project site contain wetlands or other waterbodies (including streams, rivers, ponds or lakes)?  Yes  No

ii. Do any wetlands or other waterbodies adjoin the project site?  Yes  No  
 If Yes to either i or ii, continue. If No, skip to E.2.i.

iii. Are any of the wetlands or waterbodies within or adjoining the project site regulated by any federal, state or local agency?  Yes  No

iv. For each identified regulated wetland and waterbody on the project site, provide the following information:

- Streams: Name 837-78, 847-687 Classification C
- Lakes or Ponds: Name None Classification N/A
- Wetlands: Name Federal Waters, Federal Waters, Federal Waters,... Approximate Size \_\_\_\_\_
- Wetland No. (if regulated by DEC) \_\_\_\_\_

v. Are any of the above water bodies listed in the most recent compilation of NYS water quality-impaired waterbodies?  Yes  No  
 If yes, name of impaired water body/bodies and basis for listing as impaired: \_\_\_\_\_

i. Is the project site in a designated Floodway?  Yes  No

j. Is the project site in the 100-year Floodplain?  Yes  No

k. Is the project site in the 500-year Floodplain?  Yes  No

l. Is the project site located over, or immediately adjoining, a primary, principal or sole source aquifer?  Yes  No  
 If Yes:  
 i. Name of aquifer: \_\_\_\_\_

m. Identify the predominant wildlife species that occupy or use the project site: _____ Common songbirds _____ White-tailed Deer _____ Squirrels other small animals _____	
n. Does the project site contain a designated significant natural community? <span style="float: right;"><input type="checkbox"/> Yes <input checked="" type="checkbox"/> No</span> If Yes:	
i. Describe the habitat/community (composition, function, and basis for designation): _____ _____	
ii. Source(s) of description or evaluation: _____	
iii. Extent of community/habitat:	
<ul style="list-style-type: none"> <li>• Currently: _____ acres</li> <li>• Following completion of project as proposed: _____ acres</li> <li>• Gain or loss (indicate + or -): _____ acres</li> </ul>	
o. Does project site contain any species of plant or animal that is listed by the federal government or NYS as endangered or threatened, or does it contain any areas identified as habitat for an endangered or threatened species? <span style="float: right;"><input checked="" type="checkbox"/> Yes <input type="checkbox"/> No</span>	
If Yes:	
i. Species and listing (endangered or threatened): _____ Short-eared Owl, Pied-billed Grebe, Sedge Wren, Northern Harrier	
p. Does the project site contain any species of plant or animal that is listed by NYS as rare, or as a species of special concern? <span style="float: right;"><input checked="" type="checkbox"/> Yes <input type="checkbox"/> No</span>	
If Yes:	
i. Species and listing: _____ Heart-leaved Plantain	
q. Is the project site or adjoining area currently used for hunting, trapping, fishing or shell fishing? <span style="float: right;"><input checked="" type="checkbox"/> Yes <input type="checkbox"/> No</span> If yes, give a brief description of how the proposed action may affect that use: _____ Increased noise, traffic and human presence; Tonawanda-Seneca Nation	
<b>E.3. Designated Public Resources On or Near Project Site</b>	
a. Is the project site, or any portion of it, located in a designated agricultural district certified pursuant to Agriculture and Markets Law, Article 25-AA, Section 303 and 304? <span style="float: right;"><input checked="" type="checkbox"/> Yes <input type="checkbox"/> No</span> If Yes, provide county plus district name/number: <u>GENE002</u>	
b. Are agricultural lands consisting of highly productive soils present? <span style="float: right;"><input checked="" type="checkbox"/> Yes <input type="checkbox"/> No</span> i. If Yes: acreage(s) on project site? _____ ii. Source(s) of soil rating(s): <u>NRCS Web Soil Survey</u>	
c. Does the project site contain all or part of, or is it substantially contiguous to, a registered National Natural Landmark? <span style="float: right;"><input type="checkbox"/> Yes <input checked="" type="checkbox"/> No</span> If Yes:	
i. Nature of the natural landmark: <input type="checkbox"/> Biological Community <input type="checkbox"/> Geological Feature ii. Provide brief description of landmark, including values behind designation and approximate size/extent: _____ _____	
d. Is the project site located in or does it adjoin a state listed Critical Environmental Area? <span style="float: right;"><input type="checkbox"/> Yes <input checked="" type="checkbox"/> No</span> If Yes:	
i. CEA name: _____ ii. Basis for designation: _____ iii. Designating agency and date: _____	

e. Does the project site contain, or is it substantially contiguous to, a building, archaeological site, or district which is listed on the National or State Register of Historic Places, or that has been determined by the Commissioner of the NYS Office of Parks, Recreation and Historic Preservation to be eligible for listing on the State Register of Historic Places?  Yes  No

If Yes:

i. Nature of historic/archaeological resource:  Archaeological Site  Historic Building or District

ii. Name: \_\_\_\_\_

iii. Brief description of attributes on which listing is based: \_\_\_\_\_

---

f. Is the project site, or any portion of it, located in or adjacent to an area designated as sensitive for archaeological sites on the NY State Historic Preservation Office (SHPO) archaeological site inventory?  Yes  No

---

g. Have additional archaeological or historic site(s) or resources been identified on the project site?  Yes  No

If Yes:

i. Describe possible resource(s): Native American communities; the STAMP site has been cleared for Phase 1, 2, and 3 archeological studies.

ii. Basis for identification: Shovel investigation

---

h. Is the project site within five miles of any officially designated and publicly accessible federal, state, or local scenic or aesthetic resource?  Yes  No

If Yes:

i. Identify resource: John White Wildlife Management Area

ii. Nature of, or basis for, designation (e.g., established highway overlook, state or local park, state historic trail or scenic byway, etc.): State Wildlife Management Area

iii. Distance between project and resource: \_\_\_\_\_ .25 miles.

---

i. Is the project site located within a designated river corridor under the Wild, Scenic and Recreational Rivers Program 6 NYCRR 666?  Yes  No

If Yes:

i. Identify the name of the river and its designation: \_\_\_\_\_

ii. Is the activity consistent with development restrictions contained in 6NYCRR Part 666?  Yes  No

**F. Additional Information**

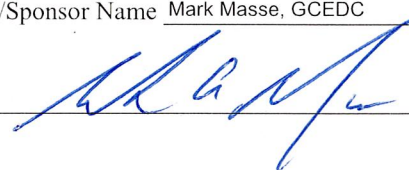
Attach any additional information which may be needed to clarify your project.

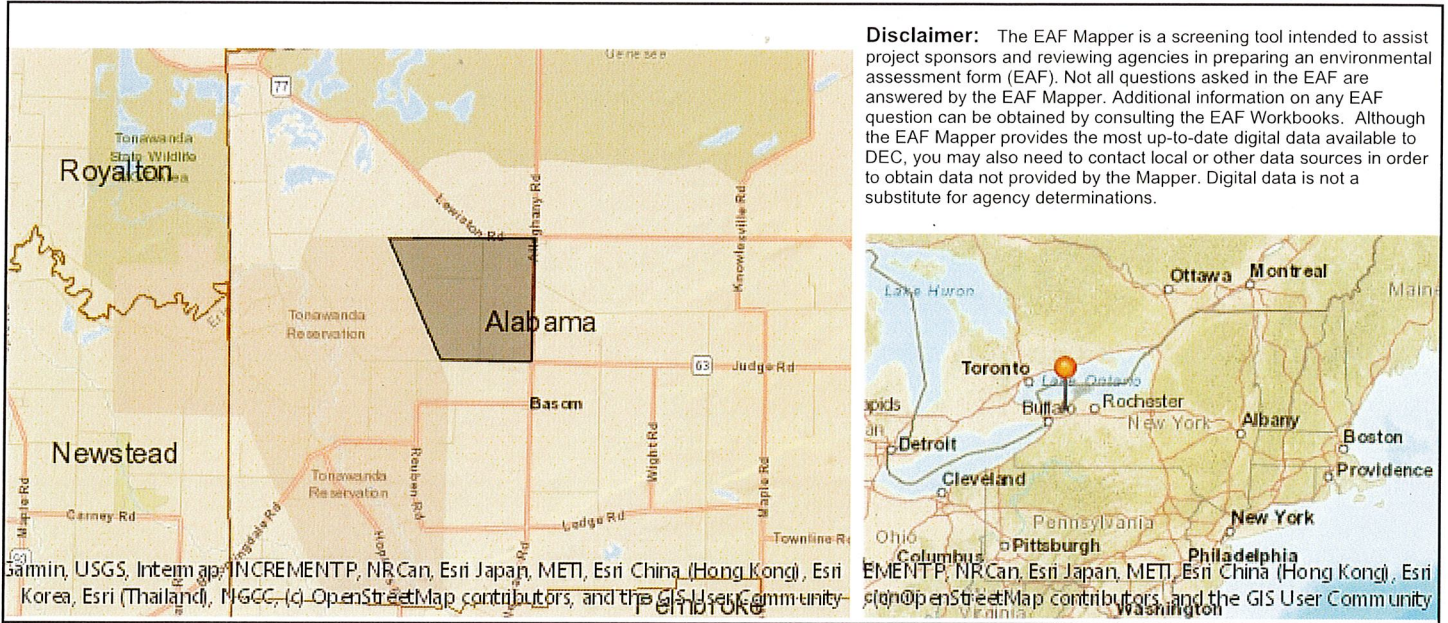
If you have identified any adverse impacts which could be associated with your proposal, please describe those impacts plus any measures which you propose to avoid or minimize them.

**G. Verification**

I certify that the information provided is true to the best of my knowledge.

Applicant/Sponsor Name Mark Masse, GCEDC Date 12/2/22

Signature  Title SR VP of Operations

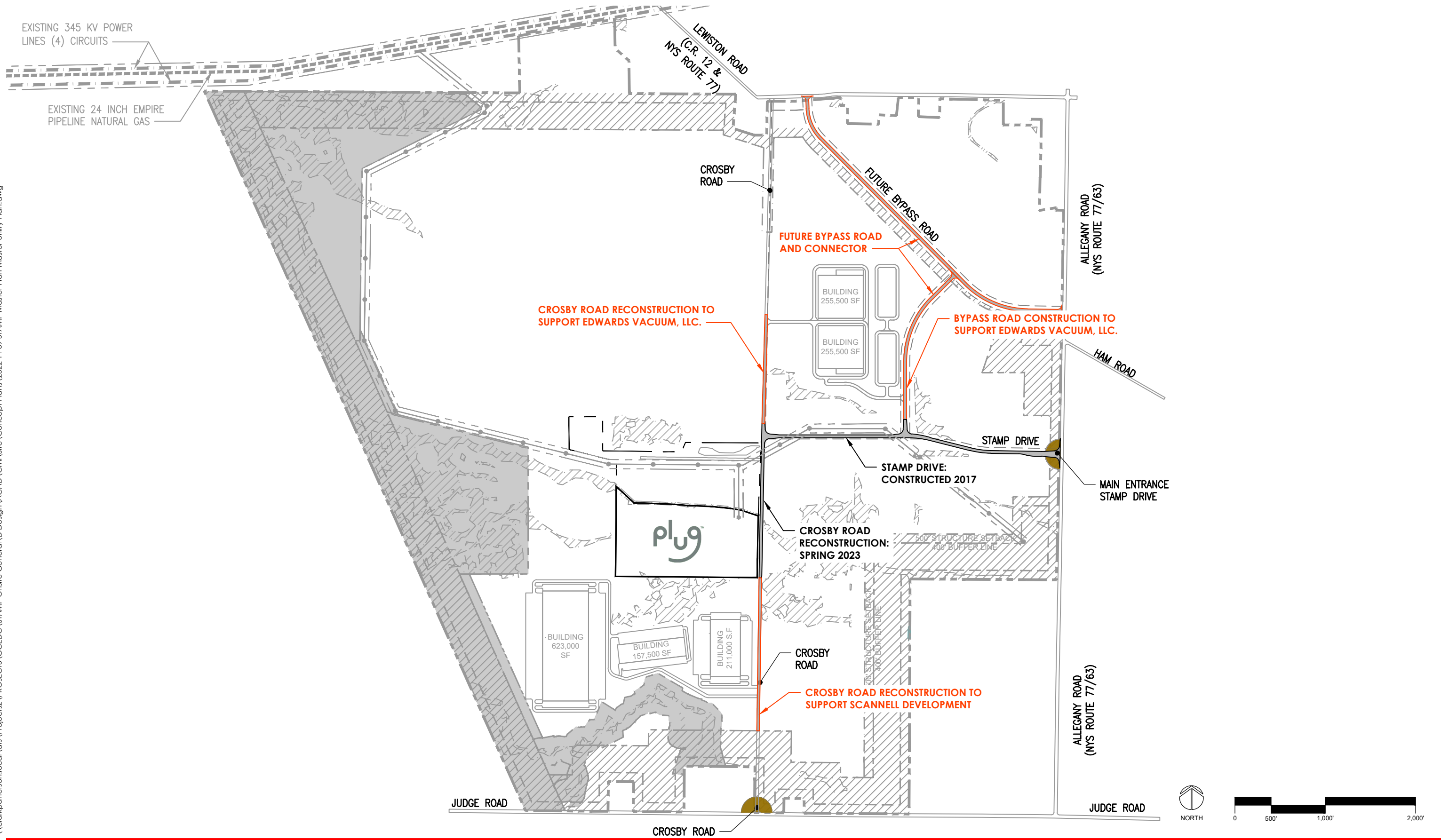


B.i.i [Coastal or Waterfront Area]	No
B.i.ii [Local Waterfront Revitalization Area]	No
C.2.b. [Special Planning District]	Digital mapping data are not available or are incomplete. Refer to EAF Workbook.
E.1.h [DEC Spills or Remediation Site - Potential Contamination History]	Digital mapping data are not available or are incomplete. Refer to EAF Workbook.
E.1.h.i [DEC Spills or Remediation Site - Listed]	Digital mapping data are not available or are incomplete. Refer to EAF Workbook.
E.1.h.i [DEC Spills or Remediation Site - Environmental Site Remediation Database]	Digital mapping data are not available or are incomplete. Refer to EAF Workbook.
E.1.h.iii [Within 2,000' of DEC Remediation Site]	No
E.2.g [Unique Geologic Features]	No
E.2.h.i [Surface Water Features]	Yes
E.2.h.ii [Surface Water Features]	Yes
E.2.h.iii [Surface Water Features]	Yes - Digital mapping information on local and federal wetlands and waterbodies is known to be incomplete. Refer to EAF Workbook.
E.2.h.iv [Surface Water Features - Stream Name]	837-78, 847-687
E.2.h.iv [Surface Water Features - Stream Classification]	C
E.2.h.iv [Surface Water Features - Wetlands Name]	Federal Waters
E.2.h.v [Impaired Water Bodies]	No
E.2.i. [Floodway]	Digital mapping data are not available or are incomplete. Refer to EAF Workbook.
E.2.j. [100 Year Floodplain]	Digital mapping data are not available or are incomplete. Refer to EAF Workbook.

E.2.k. [500 Year Floodplain]	Digital mapping data are not available or are incomplete. Refer to EAF Workbook.
E.2.l. [Aquifers]	No
E.2.n. [Natural Communities]	No
E.2.o. [Endangered or Threatened Species]	Yes
E.2.o. [Endangered or Threatened Species - Name]	Short-eared Owl, Pied-billed Grebe, Sedge Wren, Northern Harrier
E.2.p. [Rare Plants or Animals]	Yes
E.2.p. [Rare Plants or Animals - Name]	Heart-leaved Plantain
E.3.a. [Agricultural District]	Yes
E.3.a. [Agricultural District]	GENE002
E.3.c. [National Natural Landmark]	No
E.3.d [Critical Environmental Area]	No
E.3.e. [National or State Register of Historic Places or State Eligible Sites]	Digital mapping data are not available or are incomplete. Refer to EAF Workbook.
E.3.f. [Archeological Sites]	Yes
E.3.i. [Designated River Corridor]	No

# Exhibit E

\\clarkpatrickson.local\dfs\Projects2\PROJECTS\GCEDC\STAMP\Onsite General\1D Design\ACAD\Civil\Site\Concept Plans\2022 11 09 STAMP Master Plan-Master Utility Plan.dwg



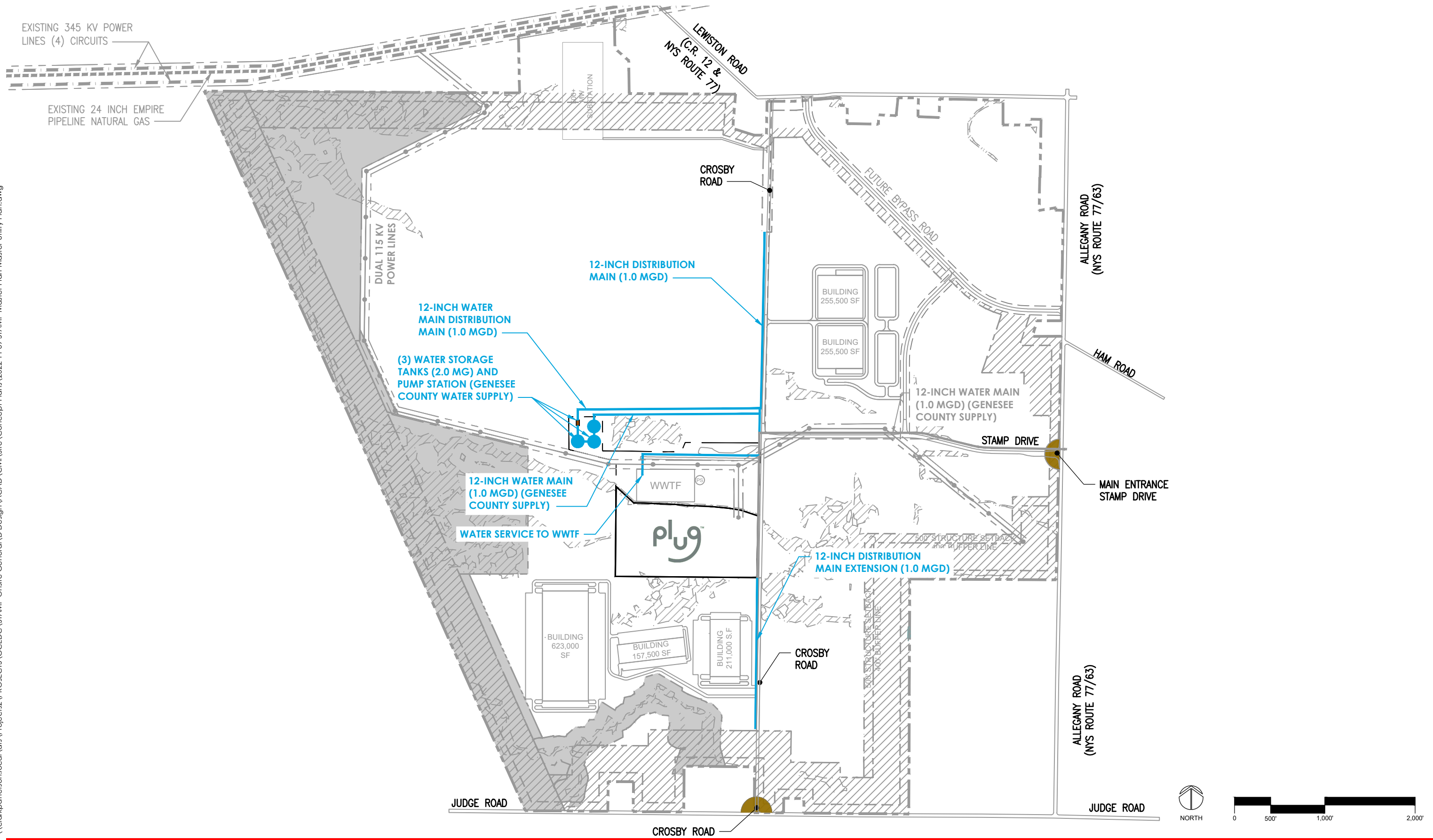
# STAMP - MASTER UTILITY PLAN - ROADWAY INFRASTRUCTURE

WNY SCIENCE AND TECHNOLOGY ADVANCED MANUFACTURING PARK (STAMP)  
DECEMBER 2022

# EXHIBIT E

# Exhibit F

\\clarkpatrickson.local\dfs\Projects2\PROJECTS\GCEDC\STAMP\Onsite General\Drawings\ACAD\Civil\Site\Concept Plans\2022 11 09 STAMP Master Plan-Master Utility Plan.dwg



# STAMP - MASTER UTILITY PLAN - GENESEE COUNTY WATER SUPPLY

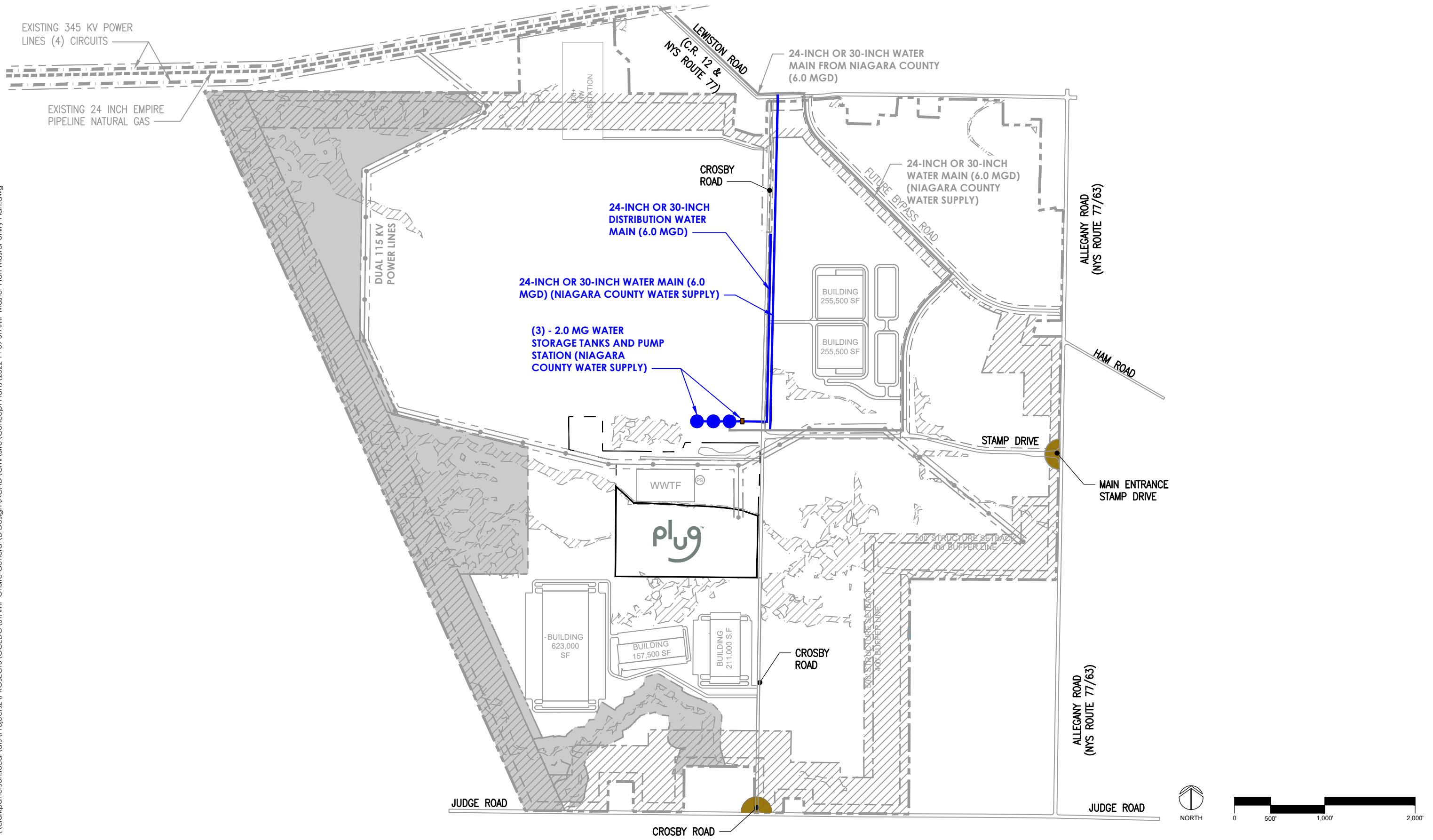
# EXHIBIT F

WNY SCIENCE AND TECHNOLOGY ADVANCED MANUFACTURING PARK (STAMP)  
DECEMBER 2022



# Exhibit G

\\clarkpatrickson.local\dfs\Projects2\PROJECTS\GCEDC\STAMP Onsite General\1 D Design\ACAD\Civil\Site\Concept Plans\2022 11 09 STAMP Master Plan-Master Utility Plan.dwg



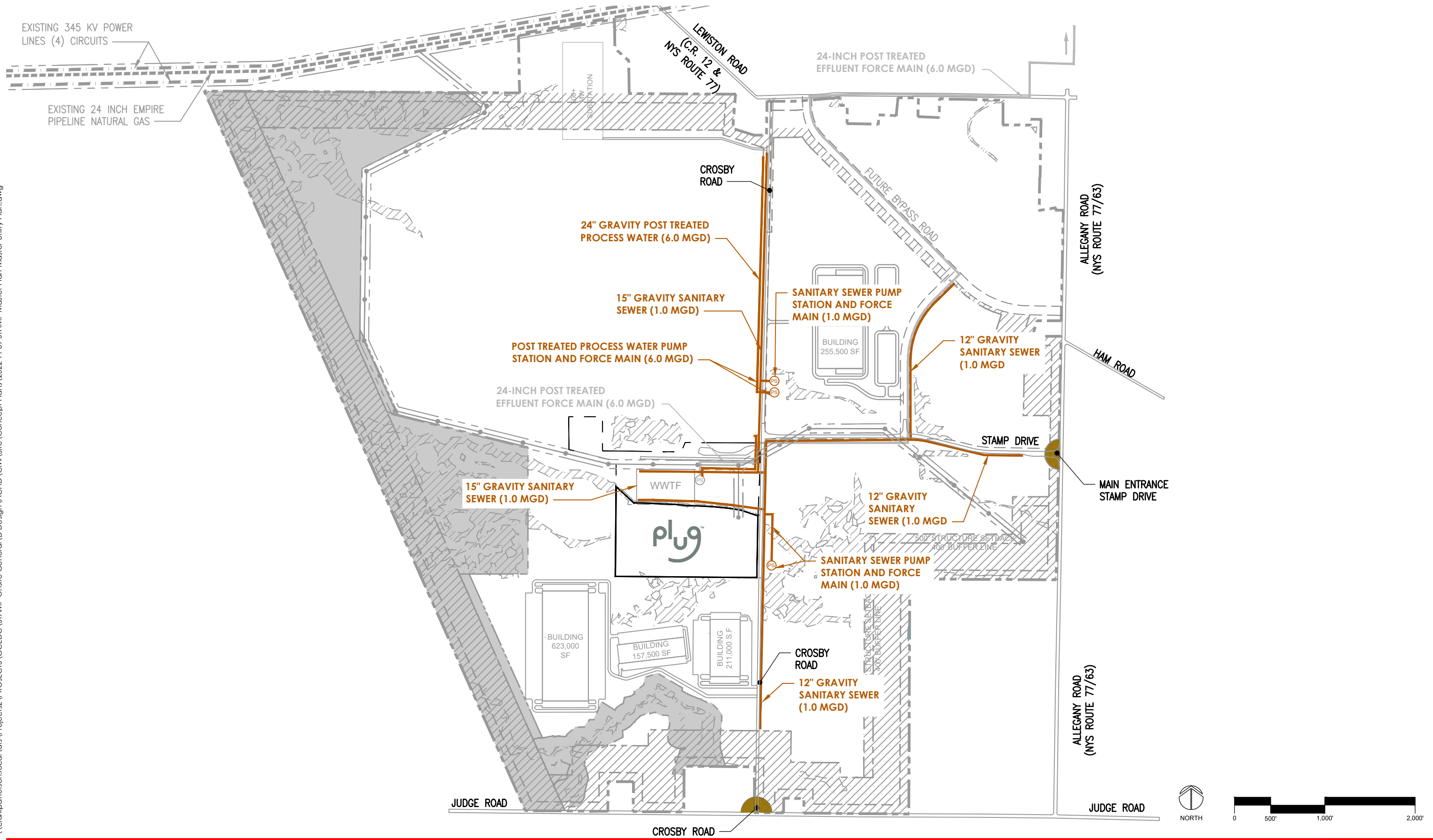
# STAMP - MASTER UTILITY PLAN - NIAGARA COUNTY WATER SUPPLY

# EXHIBIT G

WNY SCIENCE AND TECHNOLOGY ADVANCED MANUFACTURING PARK (STAMP)  
DECEMBER 2022

# Exhibit H

\\clarkpatrickson.local\dfs\Projects2\PROJECTS\GCEDC\STAMP Onsite General\1D Design\CAD\Civil\Site\Concept Plans\2022 11 09 STAMP Master Plan-Master Utility Plan.dwg



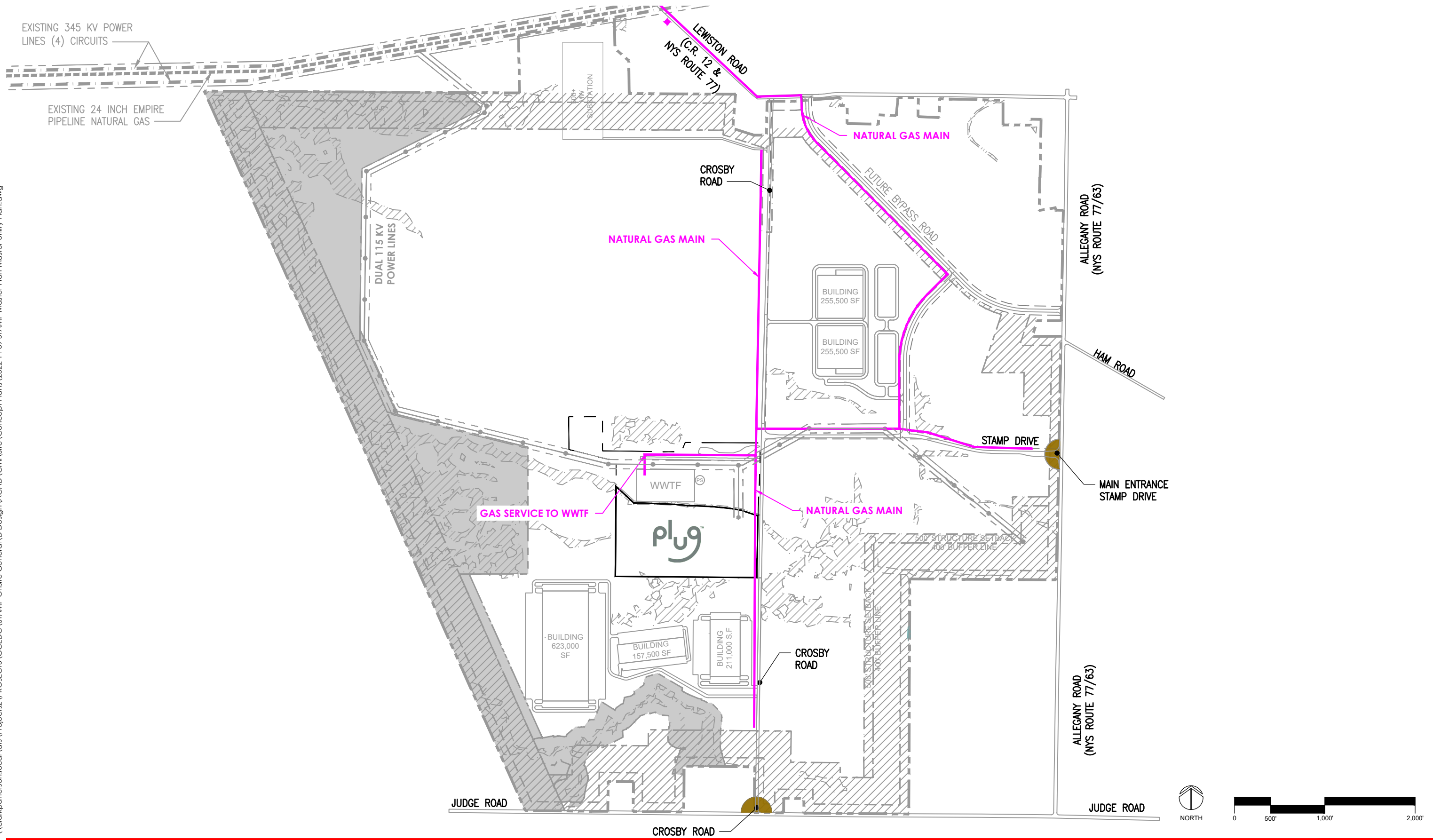
# STAMP - MASTER UTILITY PLAN - ONSITE SEWER

WNY SCIENCE AND TECHNOLOGY ADVANCED MANUFACTURING PARK (STAMP)  
DECEMBER 2022

# EXHIBIT H

# Exhibit I

\\clarkepatherson.local\dfs\Projects2\PROJECTS\GCEDC\STAMP\Onsite General\1D Design\ACAD\Civil\Site\Concept Plans\2022 11 09 STAMP Master Plan-Master Utility Plan.dwg



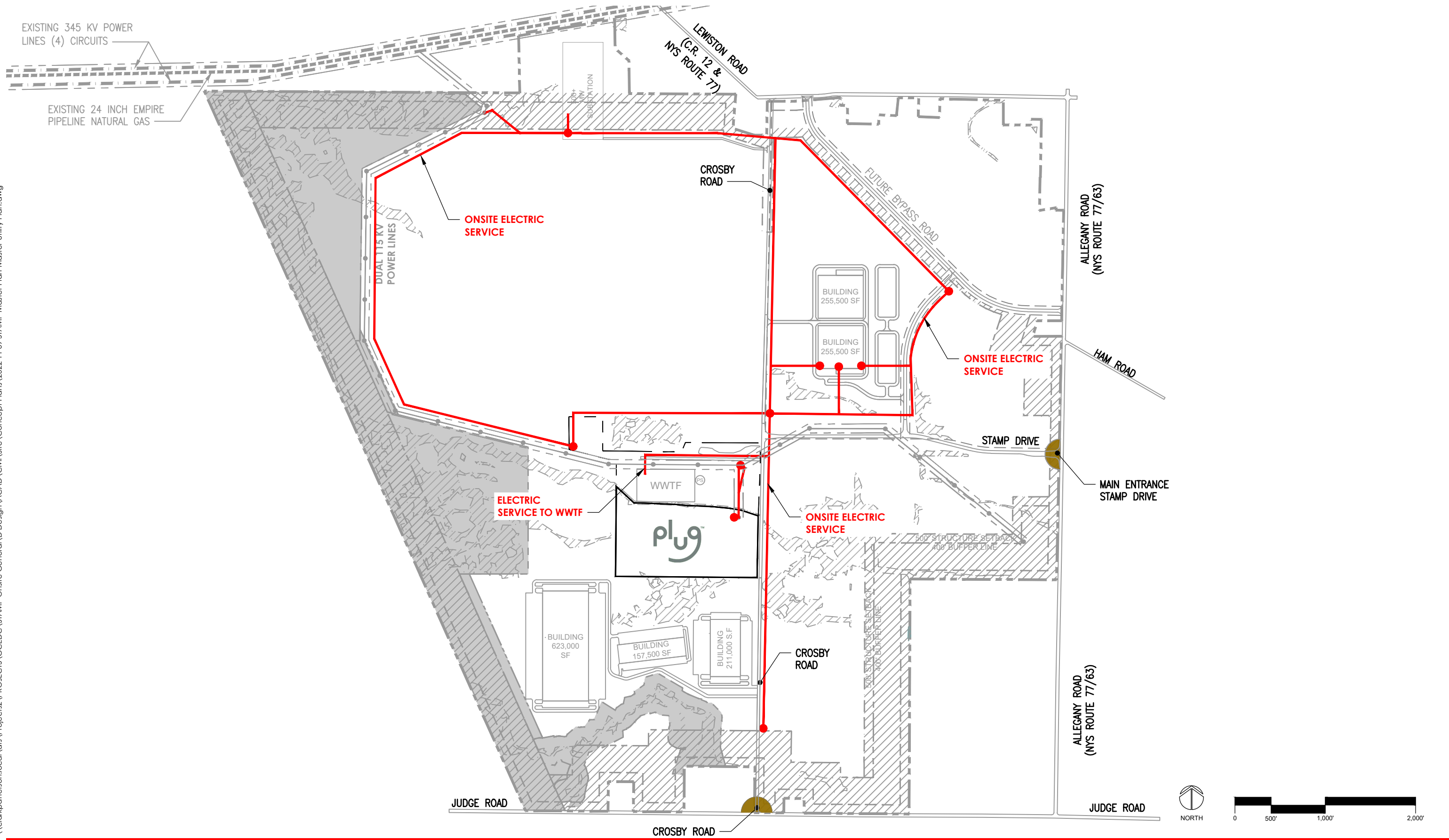
# STAMP - MASTER UTILITY PLAN - ONSITE NATURAL GAS

WNY SCIENCE AND TECHNOLOGY ADVANCED MANUFACTURING PARK (STAMP)  
DECEMBER 2022

# EXHIBIT I

# Exhibit J

\\clarkepatherson.local\dfs\Projects2\PROJECTS\GCEDC\STAMP Onsite General\D Design\ACAD\Civil\Site\Concept Plans\2022 11 09 STAMP Master Plan-Master Utility Plan.dwg



# STAMP - MASTER UTILITY PLAN - ONSITE ELECTRIC SERVICE

WNY SCIENCE AND TECHNOLOGY ADVANCED MANUFACTURING PARK (STAMP)  
DECEMBER 2022

# EXHIBIT J