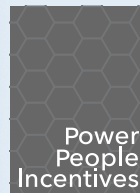


2023

ANNUAL REPORT



A Season of
Implementation



**Genesee
County
Economic
Developer
Center**

A Season of Implementation

Friends of Genesee County, we are pleased to share our 2023 Annual Report along with a deepened appreciation of our community and regional stakeholders.

Together, we've launched a **Season of Implementation** made possible by your commitment to Genesee County and its future.

This wave of activity touches every aspect of the development model guiding the GCEDC shovel-ready site development; business attraction, expansion, and retention; workforce development; and placemaking.

At the STAMP Mega-Site, historic investments by Edwards Genesee, Plug Power, and New York State are underway. This validation of our shared vision energizes our work and encourages even more advanced manufacturing projects to join our community. Empire State Development, our Economic Development Partner of the Year, is a leader in delivering the resources that enable family-sustaining careers in successful industries to fill STAMP and our county.

2023 was active across Genesee County.

In Pembroke, NEXgistics topped off a 50-foot-tall logistics facility and headquarters while the mixed-use Brickhouse Commons completed market-rate apartments nearby.

In Batavia, Rochester Regional Health, New York Bus Sales, and LandPro Equipment completed major investments that showcase our healthcare, transportation, and agricultural strengths.

In Bergen, Liberty Pumps celebrated the opening of a Materials Center.

The expansion of our manufacturing base, the growth of our workforce training programs, critical infrastructure, and our communities will continue in 2024. We can look back at 2023 and see these achievements have already started.

We conservatively estimate that the 11 projects that we record as 2023 project wins will generate over \$700 million of economic activity. In the past two decades, Genesee's over 500 wins have achieved over \$2.25 billion of investment and over 5,500 pledged jobs.

That growth is a credit to Genesee County being business-friendly, project-ready, and uniquely positioned in our region. As your economic development professionals, we're grateful to serve a mission that reinforces our strengths and guides our future.

On behalf of our team, thank you!

Sincerely,
Peter Zelif, Board Chairman
Steven G. Hyde, President and CEO



Welcome to Genesee County

Genesee County Economic Development Center (GCEDC) brings unparalleled success to Genesee County with laser focus, steadfast commitment, and strategic investments!

Genesee County Legislators continue to invest in the GCEDC's mission as the return on this investment has multiplied jobs, careers, and entrepreneurship in our county. Further targeted support of workforce development is providing multiple-level pathways of success for our families, home ownership, and education systems. Workforce initiatives are highly successful when mirrored to our economy's changing needs. Our education partners remain nimble to meet these evolving careers.

Synergies of our shovel-ready business parks can pivot to responding to federal and state priorities quickly. Their commitment to funding opportunities that fully develop our parks signals their support of our processes and strategy in Genesee County. New York State's designation of our region as a Tech Hub offers the excitement and creation of advancing new enterprises. This new regional effort demonstrates the creation and value of each local industry. We look forward to their contribution to a holistic and robust economy.

The GCEDC and Genesee County are strong partners in developing an environment where businesses can thrive and compete on the global stage. We collectively link our strengths and efforts to work towards a common goal of full employment for everyone in our community.

In 2024, our legislators will again provide economic development support to GCEDC with full confidence of continued business foundational growth. I am proud of the building blocks placed and look forward to our growing successes in the evolving economy of Genesee County.

Sincerely,
Rochelle M Stein,
Chair Genesee County Legislature



 **11**
PROJECTS CLOSED

 **348**
NEW JOBS PLEDGED

 **\$256M**
CAPITAL INVESTMENT

 **411,312 SQ FT**
NEW & RENOVATED FACILITIES

 **\$700M**
ECONOMIC IMPACT

Our Organizations

The **Genesee County Economic Development Center's (GCEDC)** mission is to facilitate local economic growth and development which fosters investment and job creation for the benefit of our residents and children. We do this by offering financial assistance, real estate solutions, workforce development programming and placemaking options in order to build back local and regional manufacturing and by supporting the continued growth and success of our local businesses all across Genesee County.

The **Genesee Gateway Local Development Corporation's (GGLDC)** mission is to assist local economic development efforts by making real estate development investment to bolster shovel ready tech and industrial park development and to provide tax and other related financial assistance to commercially viable projects in Genesee County thereby enabling the continued development of a sustainable long-term economy.

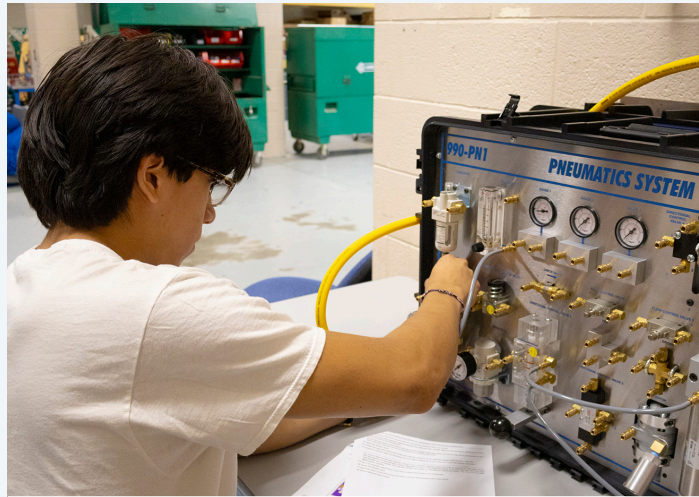
The **Genesee County Funding Corporation's (GCFC)** mission is to assist local economic development efforts by serving in a conduit financing capacity enabling the issuance of taxable and non-taxable debt to benefit the growth, expansion, on-going operations and continued viability of non-profit business enterprises in Genesee County thereby helping to maintain a sustainable long-term economy.

The **STAMP Water Works Inc.'s (SWWC)** mission is to own, operate and maintain an onsite transmission system (including storage) to provide water to all tenants within the STAMP site that would be purchased from various municipal sources.

The **STAMP Sewer Works Inc.'s (SSWC)** mission is to operate and maintain an onsite wastewater treatment system for sanitary sewer waste from tenants within the STAMP site and the Hamlet of Alabama. STAMP Sewer Works, Inc. will also own, operate, and maintain an outfall pump station and force main to accept post treated process wastewater from industrial tenants within the STAMP site.



In 2023, **LandPro Equipment** opened its regional training, sales, and support campus in Batavia. The **GCEDC** supported this project, which serves as a central hub for training and operations in western New York.



In 2023, the **Genesee Valley Pre-Apprenticeship Bootcamp** trained its largest class of mechatronics students using state-of-the-art equipment based in Batavia. The **GGLDC** supported the purchase of this equipment.



In 2023, **Rochester Regional Health** completed the four-story Batavia Medical Campus, a destination campus with more than a dozen specialty areas. The **GCFC** supported this healthcare project with tax-exempt bonding.



GCEDC Staff

Steve Hyde, President & CEO | **Mark Masse**, Senior Vice President, Operations | **Chris Suozzi**, Vice President, Business & Workforce Development | **Lezlie Farrell**, Chief Financial Officer | **Jim Krencik**, Senior Director, Marketing & Communications | **Penny Kennett**, Operations Manager | **Lauren Casey**, Financial Assistant | **Emma Finch**, Operations Assistant



GCEDC Board of Directors

Peter Zelif, Chairman | **Matthew Gray**, Vice Chairman | **Paul Battaglia**, Board member | **Chandy Kemp**, Board member | **Kathleen Manne**, Board member | **Craig Yunker**, Board member | **Marianne Clattenburg**, Legislature Liaison



GGLDC Board of Directors

Don Cunningham, Chairman | **Jonathan Tretter**, Vice Chairman | **Sarah Noble-Moag**, Secretary | **Gregg Torrey**, Treasurer | **Mark Brooks**, Board member | Not pictured: **Paul Battaglia**, Board member | **Marianne Clattenburg**, Board member | **Craig Yunker**, Board member | **Peter Zelif**, Board member

GCFC Board of Directors

Peter Zelif, Chairman | **Matthew Gray**, Vice Chairman | **Tom Turnbull**, Secretary | **Hollis Upson**, Treasurer | **Maureen Marshall Torrey**, Board member | **William Lapple**, Board member

STAMP Water Works Inc. & STAMP Sewer Works Inc.

Pete Zelif, Chairman | **Paul Battaglia**, Vice Chairman | **Steve Mountain**, Secretary | **Tim Hens**, Treasurer | **Marianne Clattenburg**, Board member | **Robert Crossen**, Board member | **Craig Yunker**, Board member

Pembroke, GCEDC open doors for NEXgistics

Needing a permanent and strategic location for a high-bay logistics facility with quick access to the Buffalo-Niagara airport, NEXgistics looked east.

“We have been searching for a suitable location to really establish a permanent headquarters, and we’re extremely excited to have found a home here in Genesee County,” said NEXgistics President Steve Northman.

With the GCEDC’s support, NEXgistics constructed a 140,000 SQ FT facility to employ 24 workers on Pembroke’s industry-ready 1-90 corridor.

In August the company led a topping-off ceremony for the \$17.6 million facility that shared why Genesee County was the ideal place for NEXgistics to grow.

“The entire GCEDC team, along with Pembroke Supervisor Tom Schneider have opened their arms as well as countless doors for us. When things got tough, these folks got cracking and I cannot genuinely thank them enough for all they have done and all they continue to do.”



2023 Projects

Atlas Copco USA & Subsidiaries (Edwards Genesee)

is investing \$212 million to construct a 236,000 sq ft semiconductor dry pump manufacturing facility that will employ 343 full-time workers in Alabama with support from the GCEDC.

NEXgistics is investing \$17.6 million to construct a 140,000 sq ft distribution center and national headquarters that will employ 24 full-time workers, including 3 new positions, in Pembroke with support from the GCEDC.

Ivy Village Corp is investing \$3.7 million to construct 20 units of market-rate adult patio homes, and employ 2 full-time workers, in LeRoy with support from the GCEDC.

Forefront Power is investing \$9.7 million to construct a 5-MW community solar farm in Elba with support from the GCEDC.

RPNY Solar 6 is investing \$5.9 million to construct a 3-MW community solar farm in Batavia with support from the GCEDC.

RPNY Solar 7 is investing \$3.5 million to construct a 1.6-MW community solar farm in Batavia with support from the GCEDC.

Batavia Solar is investing \$3.2 million to construct a 1.65-MW community solar farm in the Batavia with support from the GCEDC.

Capital Investments by **Valiant Real Estate** and **LandPro Equipment** for 2022 projects increased by \$1.5 million and \$1.3 million, respectively.

Land Sales

Land sales to **Atlas Copco USA & Subsidiaries (Edwards Genesee)** and **J-Rental** for land at the STAMP Mega-Site and Apple Tree Acres, respectively, generated \$4.6 million.

Grants

Genesee CARES Business Recovery Funds administered by the GGLDC supported \$457,000 of investments to 12 small businesses recovering from the economic hardships of the COVID-19 pandemic.

Our Model for Economic Development

Genesee County’s Economic Development Model guides our approach to attracting new investment, community growth, and a high quality of life as we develop resources and implement regional partnerships.

Genesee County has supported over 500 projects since 2003, resulting in commitments of \$2.26 billion of capital investment, 5,500 jobs, and 5.4 million sq ft of new and renovated facilities.

Shovel-Ready Site Development

Genesee County leverages our regional location, workforce, and transportation assets by developing over 1,800 acres of **shovel-ready sites**, including the **STAMP Mega-Site**. Sites are designed and located along infrastructure corridors. Our **Edge Development Strategy** grows family-supporting careers and encourages in-fill development in our city and village centers.

Business Attraction, Expansion & Retention

Investments incentivized by our **project financing programs** have placed Genesee County in the Top 10 nationally among peer communities for business growth for 19 consecutive years.

In addition to **Financial Assistance**, GCEDC staff provide **Technical Assistance** to projects through utility programs and site selection. In 2022-23, Genesee CARES also supported **Entrepreneurship & Small Business** during COVID.

Workforce Development

We implement a team-based, industry-focused **F.A.S.T. workforce strategy** with partners in career support, apprenticeships, education, and technical training. Our team convenes, designs, and supports **Stackable, Industry-Focused Programs** like New York’s top high school mechatronics lab, and effective youth apprenticeships and pre-apprenticeship programs that drive participation and success.

Placemaking

Genesee County offers a mix of rural beauty, active Main Streets, and a center city that create family-friendly lifestyles with access to cultural and healthy living assets; and strong connectivity to Buffalo and Rochester. **Housing development** is a key enabler of the GCEDC’s talent attraction and retention strategy. With municipal partners, the GCEDC’s programs incentivize new housing construction, market-rate apartments, downtown redevelopment and housing stock improvements.



Incentives for Growth

The GCEDC assists businesses locating and expanding in Genesee County with the following Incentives:

Property Tax: A Payment in Lieu of taxes (PILOT) agreement covers a set schedule for property-tax type payments made to Genesee County and a project’s municipality and school district.

Sales Tax: An exemption from the 8% state and local sales tax on non-production equipment and construction materials.

Mortgage Tax: An exemption covering 80% of the costs generated by the 1.25% mortgage recording tax.

GAIN Loan Fund: Businesses in the agricultural and food & beverage industries are eligible for assistance.

The GGLDC can assist businesses locating and expanding in Genesee County with the following Loans:

Revolving Loan Funds: Businesses pursuing manufacturing, commercial, mixed-use and redevelopment projects are eligible for gap financing.

The GCFC assists businesses locating and expanding in Genesee County with the following Bonds:

Tax Exempt Bonds: Qualified non-profit and for-profit projects are eligible for assistance.

Expansions Grow Liberty Pumps Industry Leadership

Liberty Pumps, a beacon of success since its inception in 1965, recently celebrated a remarkable achievement with the completion of their state-of-the-art material handling center and link building in Bergen.

The addition completed in 2023 has propelled the facility's total size to an impressive 350,000 sq ft. This expansion showcases Liberty Pumps' commitment to innovation and stands as a testament to their continuous contribution to community development.

The journey to this milestone is marked by a series of expansions, with the Bergen facility experiencing significant growth from an initial 60,000 sq ft in 2000. Liberty Pumps has consistently expanded its operations, generating employment opportunities for the local community.

"This has just been a great story. I've been in this position 20 years now, and I've been here for three of those major expansions," said GCEDC President and CEO Steve Hyde. "When I got the role, (Chairman) Charlie (Cook), you had just finished your first 60,000 square feet expansion. And now look at it today. You're five times bigger... and six times larger employment than back in 2003."



Shovel-Ready sites



Apple Tree Acres in Bergen, NY is located at Interstate 490 and New York State Routes 33 & 19. Home to manufacturing, distribution, and food & beverage projects.

Buffalo East Tech Park in Pembroke, NY is located at New York State Routes 5 & 77 with fast access to Interstate 90. Home to manufacturing, logistics, agri-business, and mixed-use projects. A 9-acre greenfield parcel is available for development on Brickhouse Road.



Gateway I and II Corporate Park in Batavia, NY is located at New York State Route 98 with fast access to Interstate 90. Home to manufacturing, distribution, and logistics projects. The Gateway GS build-to-suit development is available for leases on Call Parkway.

How We Develop Sites

The development of the Northeast's Dairy Hub at the Genesee Valley Agri-Business Park in Batavia shows the path to how current and future projects have activated over 2/3s of the acreage at our shovel-ready sites.

Identify Market Need: We focus on industries growing in our community and are likely to succeed in our region. Market research and our region's deep base of dairy farms identified the demand for a large agri-business park.

Use Infrastructure as the Guide: Strong transportation and utility networks, and central location between Buffalo and Rochester generated strong capacities for food and beverage potential. We matched the industry's utility demands to existing infrastructure and state highway connections to locate our site.

Build a Partner-Driven Plan: Support from industry leaders, public and private partners, and skilled engineers help us evaluate and develop sites. Guidance from O-AT-KA Milk Products and funding from a variety of partners helped identify and acquire the site that became the Ag Park.

Complete the Due-Diligence: Our team completes critical environmental and planning tasks in advance. By completing a full Generic Environmental Impact Statement, and updates to town and county zoning and development plans, Ag Park became a pre-permitted site.

Connect Project-Ready Infrastructure: Seeing infrastructure completed or underway clears a hurdle for site selectors and businesses looking at Genesee County. The expanded sites and facilities now home to HP Hood and Upstate Niagara Cooperative were selected as roads, water lines and other infrastructure was constructed.

Genesee Valley Agri-Business Park in Batavia, NY is located at New York State Routes 5 & 63 less than 5 miles to Interstate 90. Home to food & beverage manufacturing and agri-business projects. 30-acre and 3-acre greenfield parcels, including acreage with rail access, are available for development on Ag Park Drive.



Le Roy Food & Tech Park in Le Roy, NY is located at New York State Route 19 less than 4 miles to Interstates 90 and 490. Developed for food & beverage, manufacturing, and logistics projects. This 75-acre greenfield site is available for development and is subdividable.

Upstate MedTech Park in Batavia, NY is located on Hawley Drive less than 3.5 miles to Interstate 90. Located on-site and adjacent to the Genesee Community College is the Upstate MedTech Center, home to medical, education, light industrial users. Co-working and office space is available.



Learn more about our sites and opportunities





STAMP's infrastructure is ready to support Plug Power, Edwards Genesee, and future projects at our mega-site. With completed projects and projects funded for construction in 2024 and 2025, our infrastructure assets continue to meet the needs of major projects considering Genesee County.



Implementing Infrastructure at STAMP

Infrastructure construction at the STAMP mega-site achieved major milestones in 2023, with more work on the horizon joining projects like STAMP's 600-megawatt substation.

The substation is now under construction at STAMP's northern boundary. It will connect the New York Power Authority's high-capacity transmission system to an electric distribution system led by National Grid's upgraded 115-kilovolt power lines.

A \$56 million FAST NY award for STAMP announced in November supports and accelerates infrastructure projects that were ready-to-bid having completed design, engineering, and permitting activities.

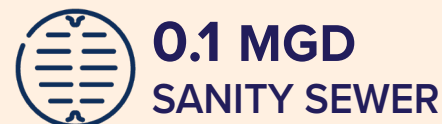
Water. In addition to a completed 1 million gallons per day water line, FAST NY is funding construction and completion of a 1.5 million gallons per day water line that connects to a redundant water source. This project will add large-capacity water lines in a system that is further upgradable with upstream improvements.

Sanitary Wastewater Treatment Plant. FAST NY is funding the construction and completion of a sanitary wastewater treatment plant in STAMP's central utility area. The plant's initial planned capacity is sized for 2,000 employees on-campus gallons/day.

Wastewater. FAST NY is funding the completion of construction for a force main for the discharge from the sanitary wastewater treatment plant and pre-treated industrial process wastewater.

Natural Gas. FAST NY is funding the construction of a medium-capacity distribution line from the Empire Pipeline transmission line to STAMP's central utility area.

Infrastructure Capacities Upon Completion of Funded Construction



Semiconductor Industry Growth with Edwards Genesee

After the US Congress passed the CHIPS and Science Act, the construction of new semiconductor facilities in the United States increased by 116%. Edwards aims to support the growth in the region with a shorter supply chain and improved responsiveness while keeping an eye on our environmental impact. The company's planned Edwards Genesee dry pump factory at STAMP, scheduled to be operational in 2025, allows Edwards to do that.

The new facility will feature state-of-the-art manufacturing and measurement equipment and will be initially capable of producing 10,000 dry pumps per year with space available for reaching a capacity of 20,000 units per year.

A big focus of the project is environmental sustainability. A LEED-certified green building, Edwards Genesee will be a fully electric site, with most of its electric power supply coming from hydroelectric sources. Only 21% of its fifty-acre site will be dedicated to building and parking, leaving the remaining 79% to permeable surface and green spaces. Furthermore, the site will provide significant CO2 emissions savings on freight – an estimated 13,000 tons per year at an operating level of 10,000 pumps

National Grid Powers Green Manufacturing

In July, National Grid completed a significant milestone to support STAMP's lead project at Plug Power and open opportunities for significant future investment.

A project with National Grid's modernization and expansion of electric distribution in the Western New York and Finger Lakes regions covered 1.9 miles of 115-kilovolt lines at STAMP. National Grid met our mega-site's current and future needs by pairing an existing power line with the first distribution line from the under-construction STAMP substation.

"The electric infrastructure and equipment needed to serve STAMP customers are state-of-the-art and will provide the necessary capacity to deliver renewable hydropower to Plug Power and Edwards, as well as future STAMP tenants," said National Grid Regional Director Ken Kujawa.

The existing line previously cut across STAMP's 1,250-acres. Now it runs adjacent to both Plug Power's under-construction green hydrogen manufacturing facility, Edwards Genesee, and a 310-acre campus enabled by the re-route.



Officials from Edwards shared their workforce goals and connected with regional training centers like the Batavia Career & Technical Education Center across multiple visits in 2023.



This rendering of Edwards Genesee's semiconductor dry pump manufacturing facility STAMP previews a project commencing construction in 2024.



Construction of a 600-megawatt substation connects high-capacity power lines to a distribution system bring renewable-sourced electricity to companies at STAMP.



Ongoing construction of Plug Power's project at STAMP was highlighted by the spheres that will store the green hydrogen manufactured on-site using electrolysis.

Workforce Development

In Genesee County, we have the team to achieve great things. This year proved it, as our trained workforce, regional partners, and local solutions delivered our largest class of ready workers. In 2023, We welcomed over 3,200 participants to our Genesee County based workforce programs, including over 1,650 students at **GLOW With Your Hands: Manufacturing and Healthcare**.

At GLOW With Your Hands, high school students excitedly pursue hands-on experiences with dozens of employers in skilled trades, advanced manufacturing, construction, agribusiness, food and beverage manufacturing, and medical careers.

Across a full calendar of programs, our future leaders are gaining even deeper connections. Students are diving into mechatronics and food processing bootcamps that totaled over 1,500 hours of classroom and lab training and over 1,000 hours of on-the-job training. Having these programs and people in place has enabled companies to make big plans.

- Investments by **HP Hood, O-AT-KA Milk Products** and **Upstate Niagara Cooperative** are pushing our Batavia dairy hub to over 1,000 workers.
- At **STAMP, Edwards** and **Plug Power** have announced projects that will grow to over 685 advanced and renewables manufacturing careers with \$80,000+ average wages and benefits.
- Many of our shovel-ready sites are nearly sold out, and our home-grown manufacturers continue to grow.

We are ready to embrace the hiring challenges of the future because the early results of these programs show we can. We've built the model. Our kids are succeeding. And we'll keep growing.

Chris "Coach SwazZ" Suozzi
GCEDC Vice President,
Business & Workforce Development
Co-Founder, GLOW With Your Hands



Youth aged 7-to-13 built their own box cars before racing them at events in Batavia and Oakfield, putting hammers and wrenches into their hands ahead of their career exploration.



Students met with leaders from HP Hood, Nortera, O-AT-KA Milk Products, Upstate Niagara Cooperative and Yancey's Fancy during Cornell in High School, including tours of manufacturing facilities.



A growing tradition in Genesee County and Greater Rochester is Youth Apprenticeship Signing Days. Students get an NFL Draft-style celebration for their job shadow and co-op experiences with local employers.



GLOW'ing Success for Workforce Development

"Where are the workers of the future? They're right here."

State Labor Commissioner Roberta Reardon's 2022 assessment of GLOW With Your Hands is shared by leaders and employers across the GLOW region.

Launched in 2019 with GCEDC Vice President of Business and Workforce Development Chris Suozzi as co-founder and co-chair, GLOW With Your Hands: Manufacturing annually welcomes over 1,100 students from Genesee County and surrounding communities each fall.

They arrive to a Genesee County Fairgrounds transformed by over 60 vendors – manufacturers, skilled trades organizations, training programs, construction firms, and agri-businesses. Hands-on demonstrations give youth experience in welding, bricklaying, heavy equipment operation and mechatronics.

"This is the greatest day of my life", co-founder Jay Lazarony was told by an inspired student at the first event.

The impact of GLOW With Your Hands is felt in a wave of engagement by students. Enrollment is surging at career and technical education programs, youth apprenticeship and pre-apprenticeship programs, and into manufacturing careers by our region's students.

The result is an answer to national and generational challenges. As a participating plant manager shared following the 2023 event, "this workforce development team is light-years ahead. They've figured it out."

The mission behind "GLOW" continues to expand. In 2023, the first ever GLOW With Your Hands: Healthcare welcomed over 575 students to experience direct connections to medical professions, nursing and emergency response demonstrations, and hands-on college and career fairs. Sister events are now growing in Rochester and the North Country.

Implementing Workforce

Cornell in High School is a three-day dairy processing bootcamp led by Cornell University College of Agriculture and Life Sciences. 50+ graduating high school seniors participated in 2023's spring and fall sessions. Students receiving dairy science and sanitation training and hands-on exposure to Genesee County's food and beverage employers.

Genesee Valley Pre-Apprenticeship Program is a six-week 'earn as you learn' advanced manufacturing training program held at Genesee Valley BOCES. 10 students participated in 2023's summer session. Students graduated with 96 hours of mechatronics training and 100+ hours of on-the-job experience at advanced manufacturing companies.

Finger Lakes Youth Apprenticeship Program is a two-year program that provides students in Genesee Valley BOCES programs with hands-on experience at local manufacturers and skilled trades employers. 40 students completed jobs shadows (11th grade) and co-ops (12th grade) in 2023.

Box Car Derbies held in Batavia and Oakfield in 2023 gave 68 youth experience with hands-on construction.



Hope Knight | President, CEO & Commissioner of ESD

Our Economic Development Partner of the Year



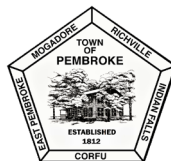
Through New York State Governor Kathy Hochul's leadership, the Science & Technology Advanced Manufacturing Park (STAMP) and Genesee County have become one of the top destinations for companies in the semiconductor, advanced manufacturing and related industries to locate their operations.

As a result of its historic support of making STAMP shovel-ready through investment in large scale infrastructure, which has resulted in commitments for \$1 billion dollars of private sector investment by Plug Power and Edwards Genesee, the Genesee County Economic Development Center is pleased to announce Empire State Development (ESD) as its 2023 Economic Development Partner of the Year.

Governor Hochul and ESD have supported Genesee County's growth across all pillars of our development model, investing in placemaking and downtowns, workforce development, and projects to grow food and beverage manufacturing, advanced manufacturing and renewables manufacturing at shovel-ready sites.

Welcoming private sector investments, creation of direct and indirect careers that sustain families and communities, is a mission shared across all levels of economic development. With Governor Hochul and leaders throughout Empire State Development, these results are achievable and accelerating in our region.

Past Economic Development Partners of the Year



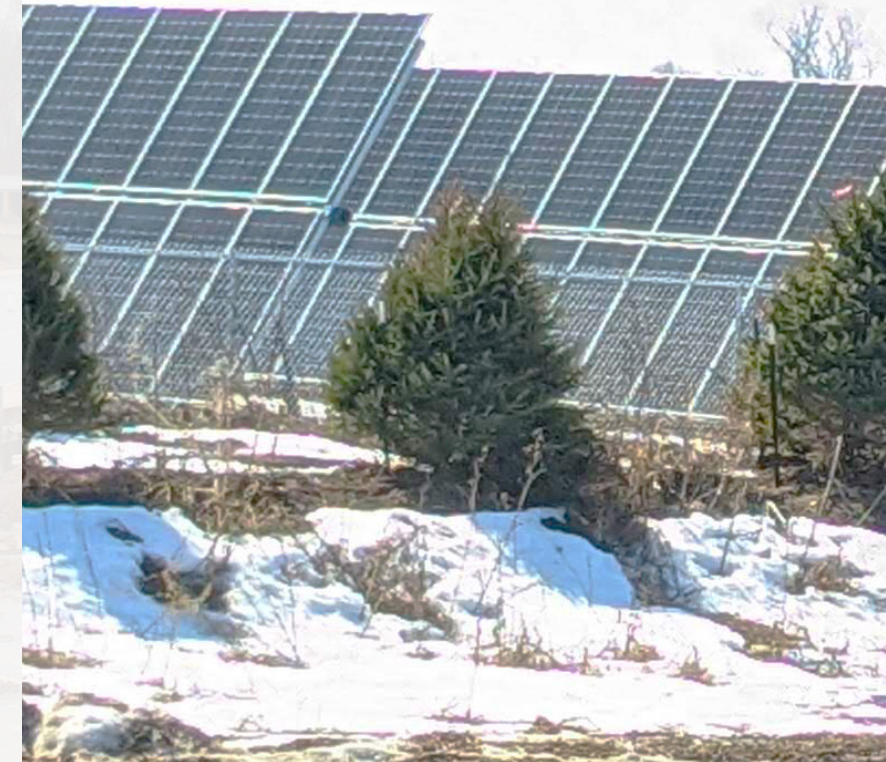
Implementing Renewable Energy

Ranging from 1.65-megawatts to 500-megawatts, over \$1 billion of completed and proposed solar energy projects in Genesee County. intend to advance a green energy grid, add construction jobs to our region, and enhance municipal revenues.

The role our agency takes with solar farms is unique compared to our business attraction, expansion and retention role. Landowners contract with developers, local and state organizations oversee siting. Outside of those actions, the GCEDC serves as a negotiator for strong local revenue alongside our municipal partners.

From 2019 to 2023, the GCEDC Board of Directors has received applications from 23 solar energy generating projects.

This cooperation leads to strong returns. Over the lifetime of all completed and proposed projects, our towns, our schools and our county are projected to receive \$127.4 million of future revenues.



Implementing Market-Rate Housing

Genesee County has a recognized need for market-rate housing as part of a 20-year demand estimated at 4,800 new single-family and rental units in 2018.

With our Housing Policy #1 and the Batavia Home Fund, the GCEDC and GGLDC and our municipal partners are accelerating efforts to match housing and economic growth.

In LeRoy, Ivy Village Corp has begun construction of 10 duplexes that will create 20 units of market-rate patio homes Targeted to empty-nesters and retirees, this project builds on a housing strategy to have quality opportunities across all sectors of our community.

In Batavia, the Batavia Home Fund has been established to leverage revenues from cluster housing developments to improve and expand Batavia's housing stock. The program opened with \$100,000 in seed funding from the GGLDC.

Economic Impact of New York's Industrial Development Agencies

The GCEDC and our peers at industrial development agencies work to grow our communities and statewide economy. An October 2023 analysis by Camoin Associates found that 2021 IDA activity supported:

- **1.3 million** permanent annual jobs
- **\$141 billion** annual wages
- **\$1.5 billion** construction wages
- **\$12.4 billion** annual tax revenue
- **\$339 million** in new revenue to schools

The creation of new housing, expansion of renewable energy, and revitalization of downtowns

[Read the full report](#)





www.gcedc.com

