



New Dry Pump Facility in Genesee County, NY

WHERE?

Located in the Western New York Science and Technology Advanced Manufacturing Park (WNY STAMP) in Genesee County, New York. Edwards Genesee aims to support growth in the U.S. semiconductor industry with a shorter supply chain and improved responsiveness.



WHY GENESEE COUNTY?

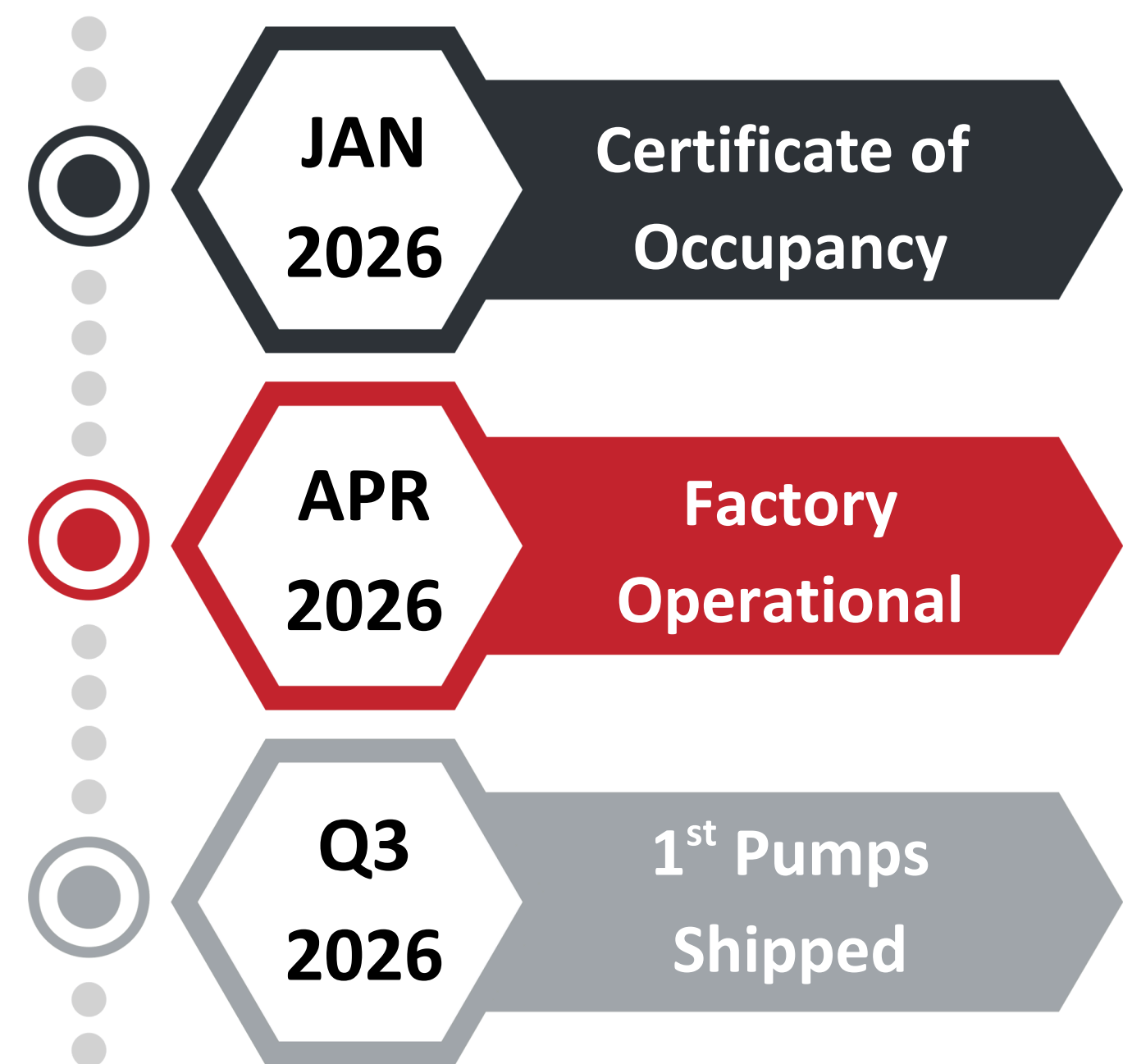
The location offers direct access to New York's semiconductor corridor, and strong support from federal, state, and local agencies. Western New York is the ideal launchpad for supporting our customers' growth in the U.S. With continued global demand and major customer investments in U.S. chip manufacturing, this facility brings production of our dry pumps closer to key markets

TIMELINE

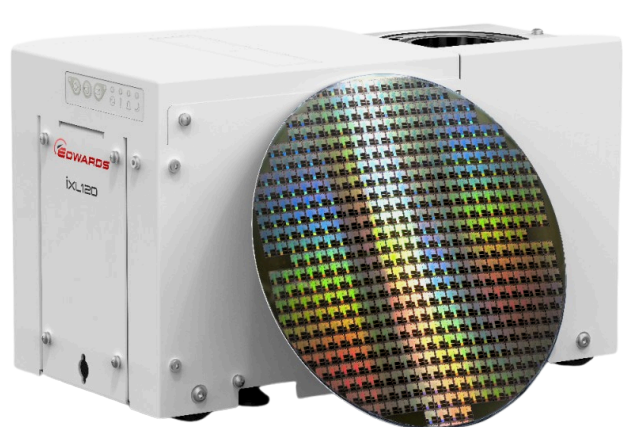
Progress continues at our 250,000-square-foot facility in Genesee County, NY. The building's exterior is largely complete, with walls up and most outside work finished. Internal mechanical systems are currently being installed, and the facility is on track.

WHAT WILL GENESEE PRODUCE?

Edwards Genesee is set to produce our renowned iXL and iXM dry pump product lines in phase one of the facility's launch. In phase 1, the facility will have a 10,000 pumps per year capacity. During phase 2 we plan to expand production for our innovative new **Ganymede** dry pumps.



iXL



iXM



Ganymede



Ganymede is our brand new line of dry pumps releasing later this year. **Ganymede** shows remarkable improvement in energy efficiency, reliability, and emission reduction all while reducing the size of the pump compared to other dry pumps.

FIND OUT MORE

Visit our website to find out how Edwards Genesee is investing in the semiconductor industry.

