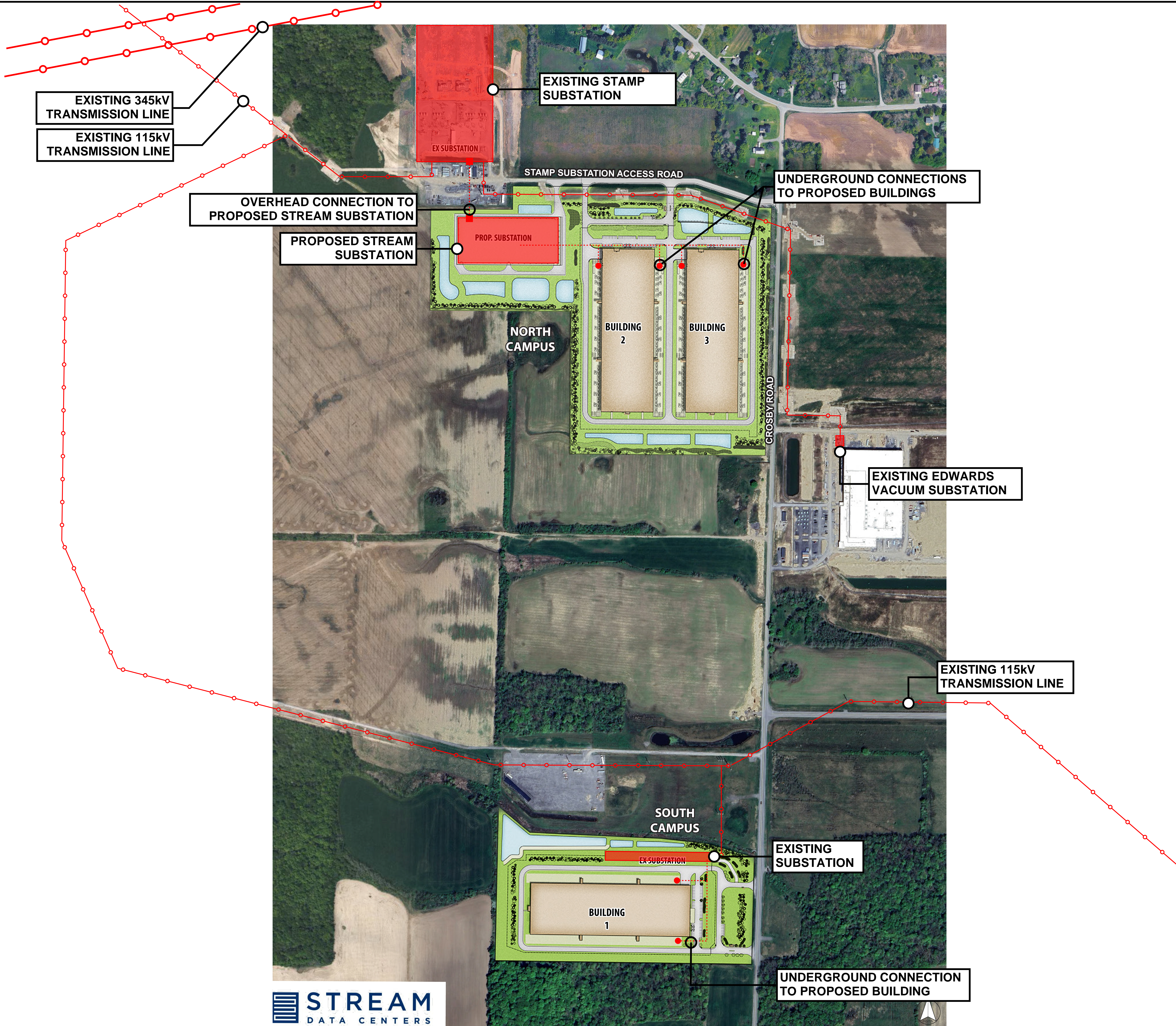


III-j | UTILITY POWER OVERALL INFRASTRUCTURE CONCEPT

V:\081591 - Stream, NY\081591-01-001 (ENR) - Buffalo, Alabama, NY\Engineering\Stream\Plan\Stream - Project - BUFFALO\Sheets\081591-01-SP-MASTER PLAN.dwg 03/17/25 01:02:38PM mcbahk.walshford, LAYOUT: C-120 MASTER PLAN



BUFA - PROJECT DOUBLE REED NORTH AND SOUTH CAMPUS OVERALL INFRASTRUCTURE EXHIBIT

TOWN OF ALABAMA, GENESEE COUNTY, NEW YORK

Bowman
Bowman Consulting Engineering, Land Surveying & Landscape Architecture
6 Campus Drive, Suite 302
Parsippany, New Jersey 07054
Phone: 973.269.2420
Fax: 973.269.4450
E-mail: NJ@Bowman.com

ERIC L. KELLER, N.Y. Professional Engineer, Lic. 085234-1

PROJ. 081591-001
DATE: JANUARY 9, 2025
CONTRACT NO. 25-001
SHEET NO. 120 OF 120
REVISIONS PER TOWN COMMENTS

| | | |
|----|----------------------------|----------|
| 1 | REVISION PER TOWN COMMENTS | 03.17.25 |
| 2 | | |
| 3 | | |
| 4 | | |
| 5 | | |
| 6 | | |
| 7 | | |
| 8 | | |
| 9 | | |
| 10 | | |
| 11 | | |
| 12 | | |

SHEET No. **EL1**