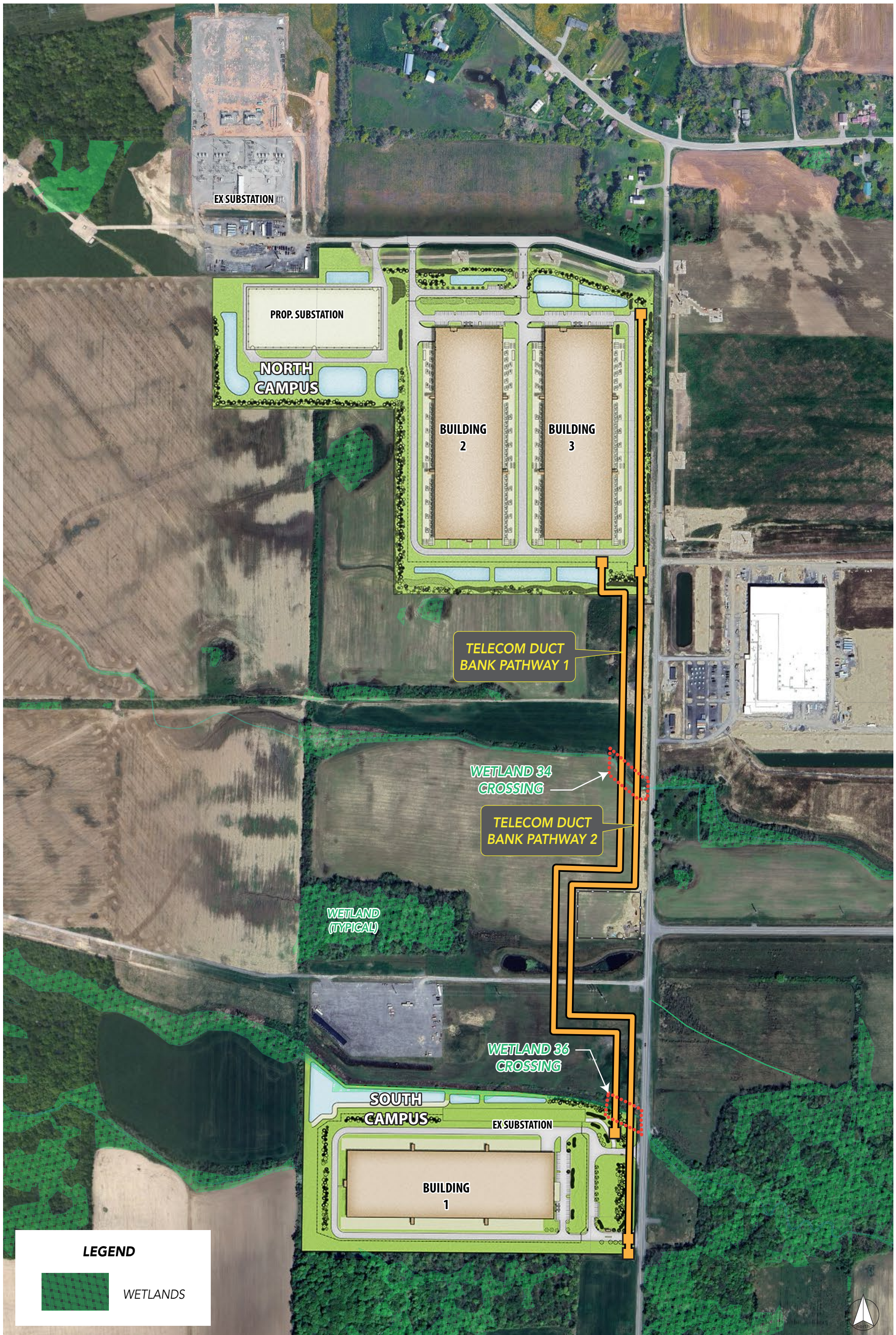
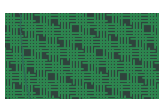


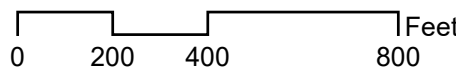
**III-c | SITE PLANS**



**LEGEND**



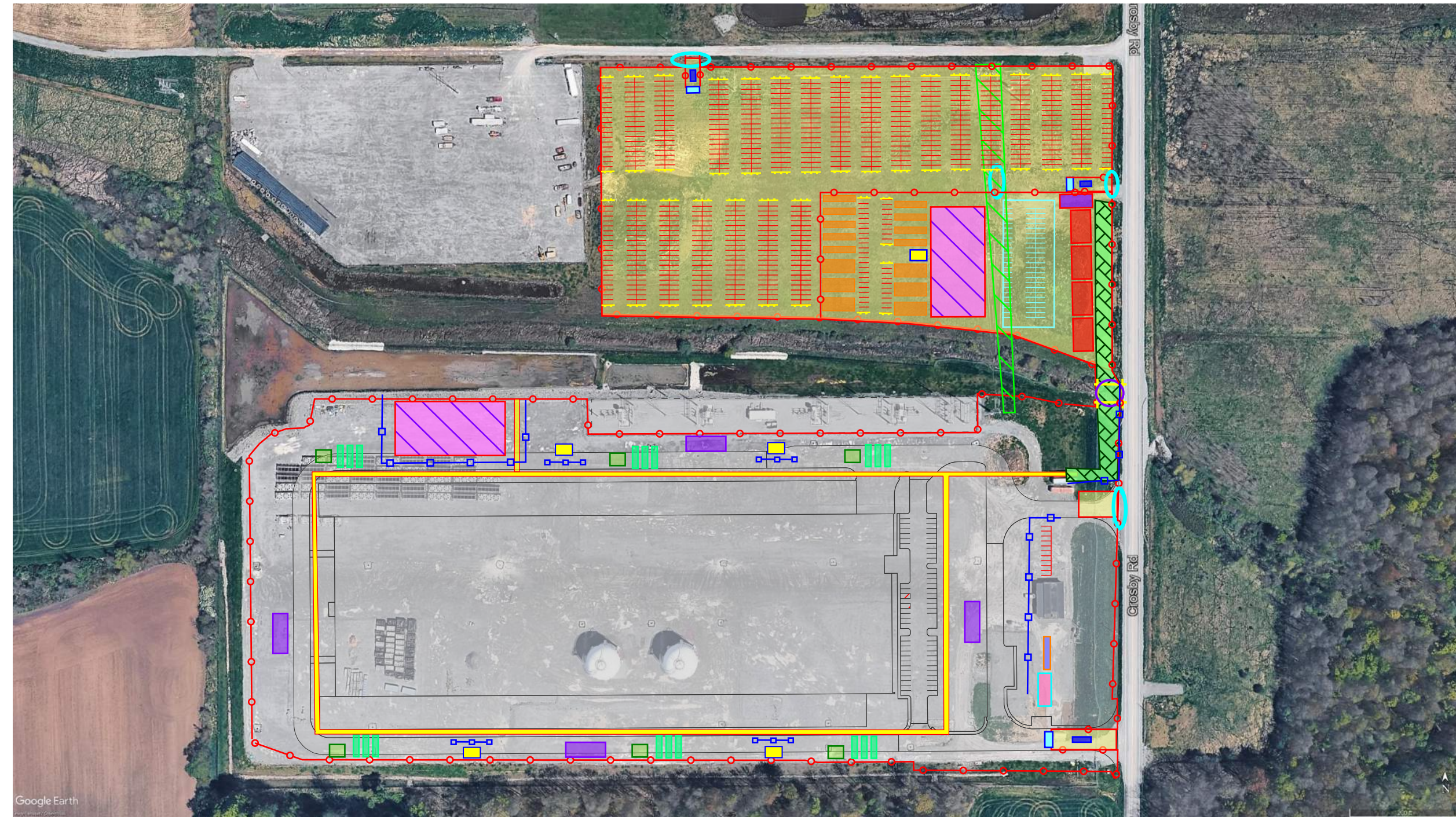
WETLANDS



**STREAM - BUFA**  
OVERALL PROJECT EXHIBIT

4-6-2026

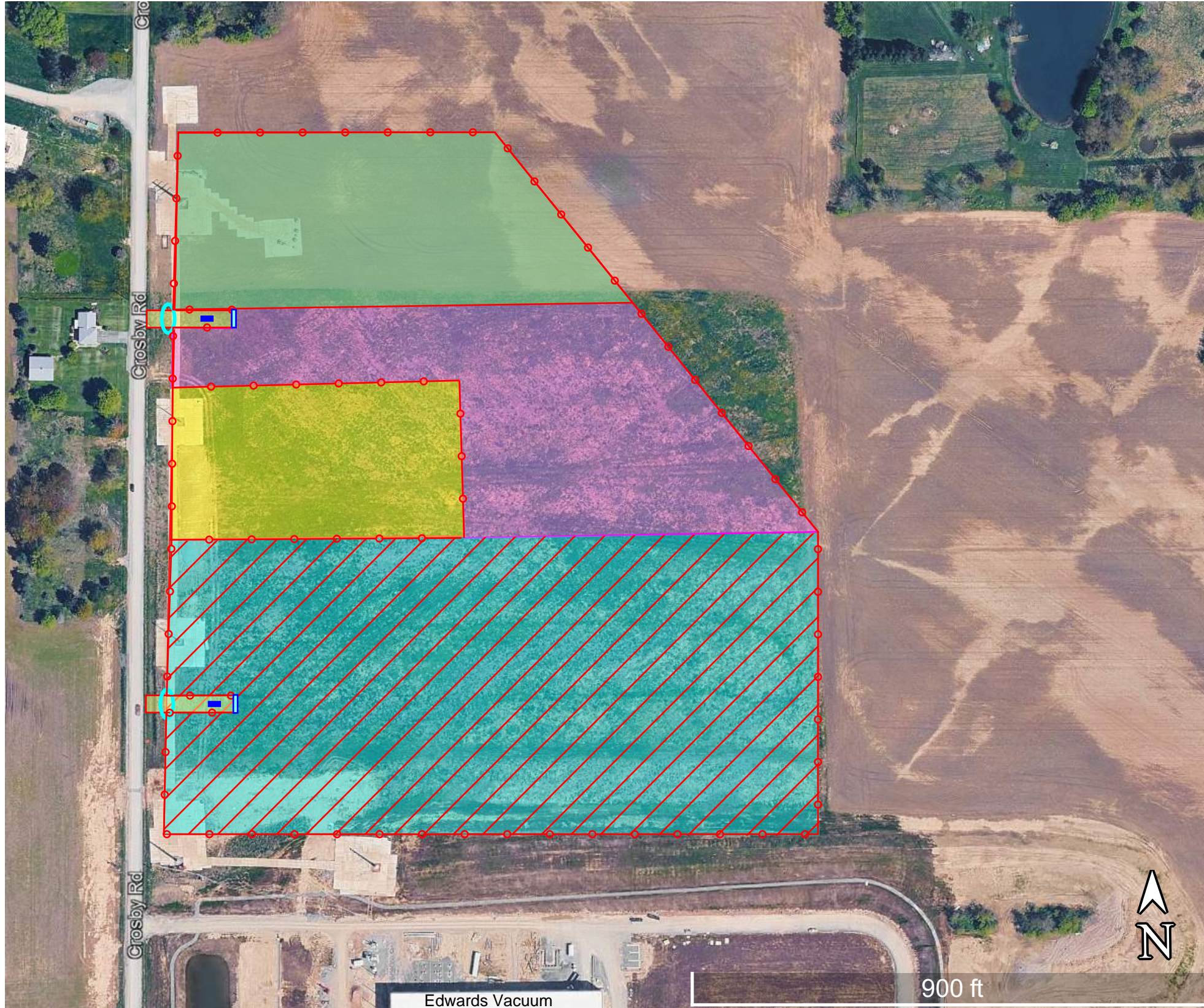




Key	
	Sliding Gate
	High Powerlines
	Perimeter Security Fencing
	Concrete Jersey Barrier
	Conex Tunnel Walkway
	Pedestrian Walkway with Plastic Barrier
	Guard House/ Access Control
	Subcontractor Trailer
	Management Trailer
	Tent (Concrete Slab)
	Employee Parking (931)
	Management Parking (66)
	Concrete Washout
	Dumpster/ Recycling
	Restroom
	Muster Point
	Office Trailer
	Medical Tent
	Goalpost Overhead Warning
	Guiderail and retaining wall modifications for walk
	Plastic Barrier
	Blacktop

# BUFA Secondary Logistics Area

2/26/2026

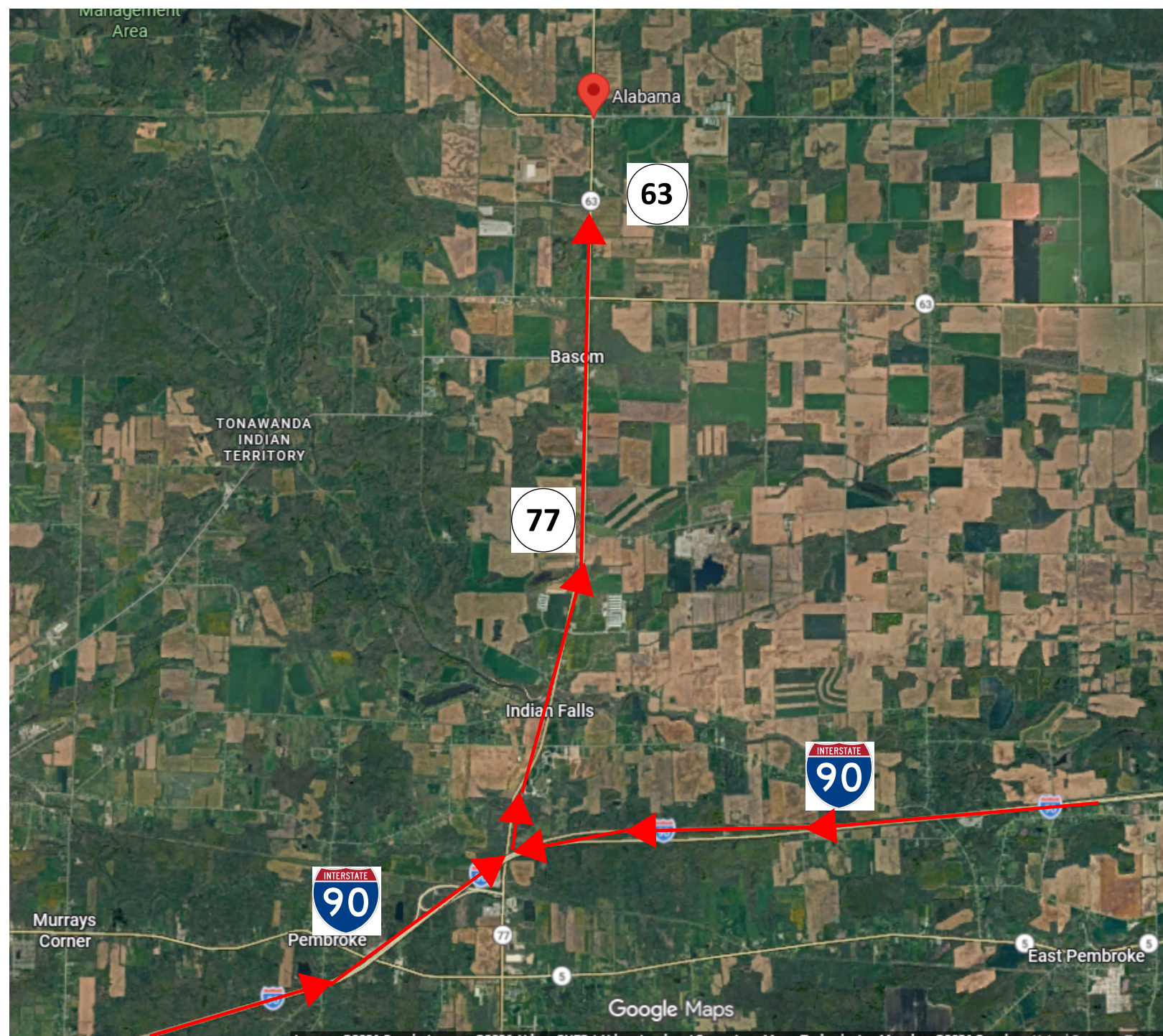


Key	
	Sliding Gate
	Perimeter Security Fencing
	Jersey Barrier
	Guardhouse / Access Control
	Staging / Laydown Area (Stone)
	Undisturbed (Soil storage)
	Equipment Storage (Blacktop)
	Overhead Power Protection
	Blacktop
	Precast Staging

# BUFA Traffic Route

2/26/2026





The designated routes are intended to minimize construction and truck traffic impacts on the more densely populated residential areas within the Town of Alabama. Stamp Drive was purpose-built to support the STAMP development and is specifically intended for this type of use. It provides a direct connection from the highway to both the north and south campuses, allowing project-related traffic to bypass local roads and significantly reduce disruption within the town.

