

## III-b | VISUAL IMPACT ANALYSIS TECHNICAL SUMMARY

The Visual Impact Analysis systematically assessed the project's presence across critical viewpoints.

**Crosby Road Viewpoints** focused on the immediate on-site experience. This analysis defined the project's scale, materiality, and landscaping treatments for the North and South campus sites within the STAMP area. This determines the visual impression for site users.

**Lewiston and Alleghany Road Viewpoints** evaluated the project's regional presence, specifically its visibility from outside the main STAMP boundaries. This assessed potential visual intrusion into the broader landscape as seen by the traveling public.

**The Tonawanda Seneca Reservation Viewpoint** provided a dedicated assessment of the visual impact from the adjacent nation's perspective.

The following localized renderings correspond to the locations shown on the Key Viewpoint Location Map below, which identifies the precise geographic context for each viewpoint rendering.



# STREAM DATA CENTERS BUFA1



Gensler

# STREAM BUFA1 SITE MAP



**VP1**

CROSBY ROAD LOOKING SOUTH



**VP1**

CROSBY ROAD LOOKING SOUTH



# VP2

CROSBY ROAD LOOKING NORTHWEST



# VP2

CROSBY ROAD LOOKING NORTHWEST



# VP3

PATTERSON RD LOOKING NORTHEAST



# VP3

PATTERSON RD LOOKING NORTHEAST



# VP4

LEWISTON RD LOOKING SOUTHWEST



# VP4

LEWISTON RD LOOKING SOUTHWEST



**VP5**

CROSBY ROAD LOOKING SOUTH



**VP5**

CROSBY ROAD LOOKING SOUTH



**VP6**

CROSBY ROAD LOOKING WEST



**VP6**

CROSBY ROAD LOOKING WEST



**VP7**

ALLEGHANY RD LOOKING WEST



**VP7**

ALLEGHANY RD LOOKING WEST



**VP8**

LEWISTON LOOKING SOUTHWEST



**VP8**

LEWISTON LOOKING SOUTHWEST



**VP9**

TONAWANDA SENECA NATION BORDER LOOKING EAST (NORTH CAMPUS)



**VP9**

TONAWANDA SENECA NATION BORDER LOOKING EAST (NORTH CAMPUS)



# VP10

PATTERSON ROAD LOOKING SOUTHEAST



# VP10

PATTERSON ROAD LOOKING SOUTHEAST



**VP11**

NORTH CAMPUS ACCESS ROAD LOOKING SOUTH



**VP11**

NORTH CAMPUS ACCESS ROAD LOOKING SOUTH



**VP12**

CROSBY ROAD LOOKING NORTH



**VP12**

CROSBY ROAD LOOKING NORTH



**VP13**

ALLEGHANY RD LOOKING WEST



**VP13**

ALLEGHANY RD LOOKING WEST



# VP14

TONAWANDA SENECA NATION BORDER LOOKING EAST (SOUTH CAMPUS)



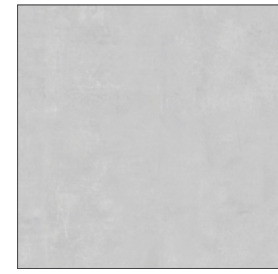
# VP14

TONAWANDA SENECA NATION BORDER LOOKING EAST (SOUTH CAMPUS)

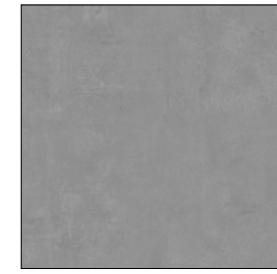




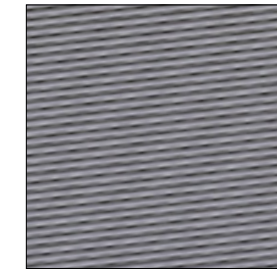
# EXTERIOR MATERIAL PALETTE



PRECAST PANEL  
NAWKAW STAINED  
COLOR: 50% BONE



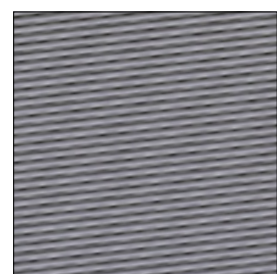
PRECAST PANEL  
NAWKAW STAINED  
COLOR: 100% BONE



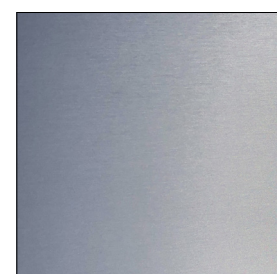
ACOUSTIC BARRIER SCREEN  
VENTEUR  
COLOR: SILVER



*Partially screened by mature vegetation*



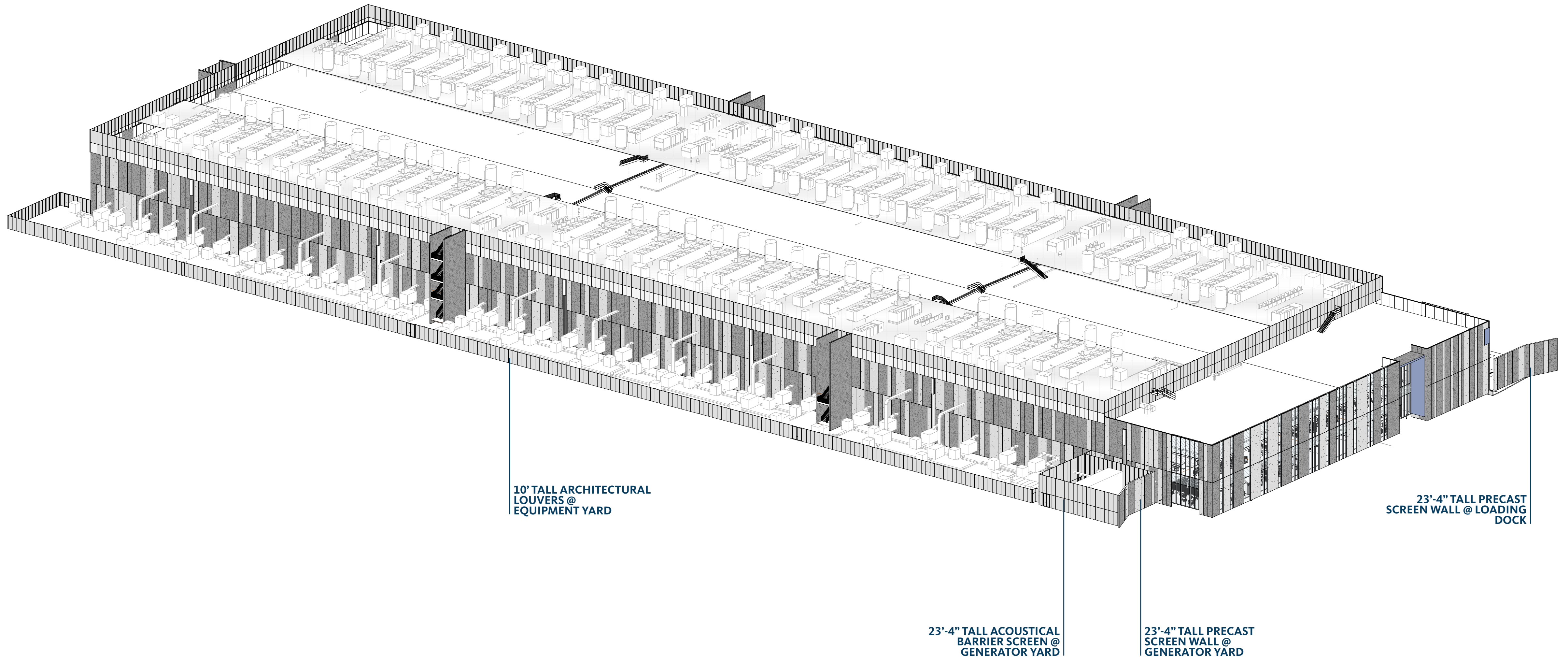
LOUVER SCREENING AT EQUIPMENT YARD  
VENTEUR  
COLOR: SILVER



DOWNSPOUTS  
COLOR: SILVER



ANTICLIMB FENCE  
AMERISTAR IMPASSE II  
COLOR: BLACK ANODIZED



**01** BUFA - OVERALL SITE AXON  
SCALE: