

**Meeting Agenda – Audit and Finance Committee**  
 Genesee County Economic Development Center  
 Thursday, December 15, 2022 – 3:00 p.m.  
 Location: 99 MedTech Drive, Innovation Zone

Page #	Topic	Discussion Leader	Desired Outcome
	1. Call To Order – Enter Public Session	M. Gray	
	<b>2. Chairman’s Report &amp; Activities</b> 2a. Agenda Additions / Other Business	M. Gray	
2-41	<b>3. Discussions / Official Recommendations to the Board:</b> 3a. Insurance Renewal	L. Farrell / J. Teresi	Disc / Vote
	<b>4. Adjournment</b>	M. Gray	Vote

## **GCEDC**

Lezlie Farrell – Finance & Operations  
**Audit & Finance Committee Report**  
**December 15, 2022**

### **Insurance Renewal**

Please see the attached email from Joe Teresi, along with the quote provided by Selective. You will notice a large increase to the General Liability premium which is related to projected cost of development contracts for 2023. Tompkins is working with Selective to see if other options are available.

Joe will attend the Audit & Finance Committee to discuss. If new or revised information becomes available prior to the board meeting, we will send that out for your review.

## Lezlie Farrell

---

**From:** Joe Teresi <jteresi@tompkinsfinancial.com> on behalf of Joe Teresi  
**Sent:** Thursday, December 8, 2022 2:45 PM  
**To:** 'Lezlie Farrell'; Mark Masse; Penny Kennett  
**Cc:** Donna Hummel  
**Subject:** FW: Genesee County Industrial - Quote  
**Attachments:** QuoteProposal (4).pdf

This message was sent securely using Cisco Email Encryption

As promised here is the primary insurance proposal. Missing is our umbrella liability terms. As we have been discussing we are fortunate Selective is continuing the coverage for the building and liability coverage. And their position on the umbrella is totally understandable and we have been very fortunate to date in the way they have treated previous renewals.

First and foremost this is not a reflection on your account nor your claims history. It has to do with your efforts as a developer and the concerns in NY State that our driven by the dreaded "scaffolding laws" aka Labor Law and the associated risks that brings to the developer. You are not alone and is a major conversation for the various entities that promote business in NY State from the Business Council, to Chamber of commerce to IDA's.

For the most part rates are not changed from previous years. The primary difference is Selective is charging for subcontractor costs and is basing their estimate of \$9,050,00 in costs on estimates supplied by Mark Masse. Rate per \$1000 is \$4.891 which appears to be a very fair rate, especially comparing to rates I have seen charged to other developers. The annual cost based on the subcontracted cost amounts to \$44,264 and final cost will be calculated at audit.

Also important is the fact that Selective is willing to consider your water and sewer operations and will be adding those names to the policy.

Now that we have the package proposal from Selective we can finalize our efforts on the umbrella and work on an umbrella program to include a limit up to \$10,000,000. Once we have that finalized we can share with you and determine how much umbrella you will be able to continue with

Two items will be required for the renewal

- 1- Updated statement of values which I will work with Donna to have prepared and forwarded to you for a signature
- 2- Updated sprinkler report for the building which is recently dated.

As always I can answer any additional questions or concerns and can be available next Thursday

Last but not least we is we did canvas the insurance marketplace and still have the same results as had in the past with no interest in the land inventory especially the stamp Site

We are very fortunate to have been able to leverage our relationship with Selective to entertain not only the existing exposures but also the Water and Sewer entities and have them included in the package policy.

Joseph Teresi, CPCU  
Vice President  
Tompkins Insurance Agencies, Inc.



	<u>Renewal</u> <u>2023</u>	<u>Annualized</u> <u>2022</u>
<b><u>SELECTIVE INSURANCE COMPANY</u></b>		
Property	\$8,573.45	\$10,338.83
General Liability	\$61,893	\$14,192
Commercial Auto	\$404	\$286
Inland Marine	\$100	\$100
Crime	<u>\$60</u>	\$60
Umbrella		<u>\$10,417</u>
Total Package	\$71,030.45	\$35,393.83
Worker's Compensation	\$3,560	\$3,566
	<b><u>Effective May 21, 2020 - 2023</u></b>	
<b><u>TRAVELERS</u></b>		
Crime	TBD	\$657
<b><u>GUARDIAN</u></b>		
Disability Benefits	TBD	TBD

Selective General Liability Includes Data Compromise Coverage with a premium of \$333. As you maintain a standalone policy you should request for us to have this coverage removed.

Current Selective general liability quote includes \$9,050,000 in subcontractor cost. This develops a premium of \$44, 464. We are reviewing with Selective if other options are available.

Named Insureds: Genesee County Industrial Development Agency, Inc.  
 dba Genesee County Economic Development Agency  
 Genesee Gateway Local Development Corporation  
 Genesee Valley Agri-Business, LLC- working with Selective to add two entities

# SELECTIVE

BE UNIQUELY INSURED<sup>SM</sup>

Quotation of Commercial Insurance

**Prepared for:**

GENESEE COUNTY INDUSTRIAL DEVELOPMENT AGENCY INC DBA GENESEE COUNTY ECONOMIC DEVELOPMENT CENTER, GENESEE GATEWAY LOCAL DEVELOPMENT CORPORATION, GENESEE VALLEY AGRI-BUSINESS LLC  
99 MED TECH DR  
BATAVIA, NY 140209712

**Presented By:**

TOMPKINS INSURANCE AGENCIES INC

Proposal Print Date: 12/08/2022

# SELECTIVE

BE UNIQUELY INSURED<sup>SM</sup>

Quotation of Commercial Insurance  
Governmental  
Renewal

**Prepared for:**

GENESEE COUNTY INDUSTRIAL DEVELOPMENT AGENCY INC DBA GENESEE COUNTY ECONOMIC DEVELOPMENT CENTER, GENESEE GATEWAY LOCAL DEVELOPMENT CORPORATION, GENESEE VALLEY AGRI-BUSINESS LLC  
99 MED TECH DR  
BATAVIA, NY 140209712

**Presented By:**

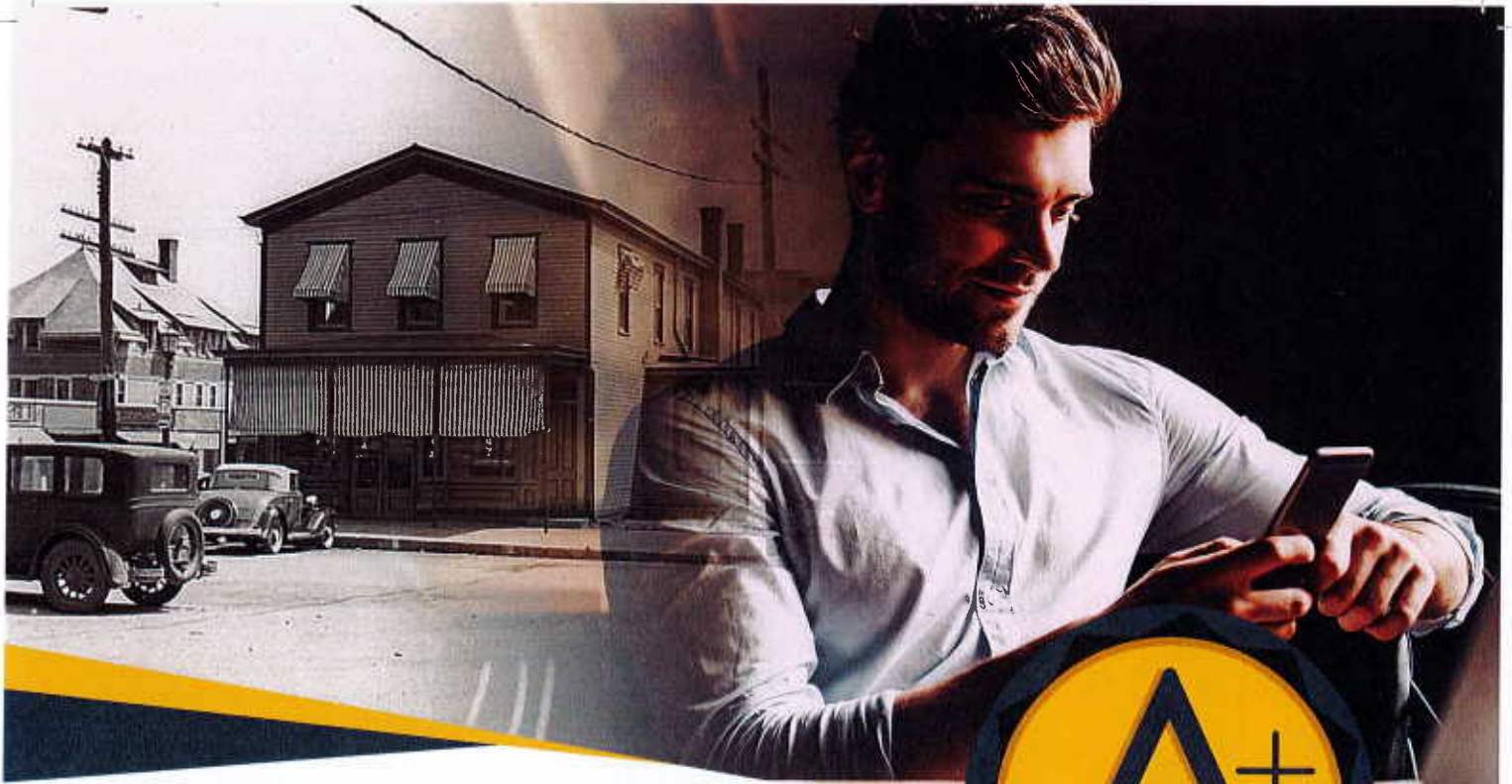
TOMPKINS INSURANCE AGENCIES INC

The following quotation of insurance has been developed for the above captioned risk.  
IT IS AGREED AND UNDERSTOOD NO COVERAGE HAS BEEN BOUND.

This quotation will expire after ( 30 ) days Or the effective date of requested coverages unless otherwise notified.

Proposal Print Date: 12/08/2022  
Underwritten By:  
Selective Ins Co of the Southeast





# PROVIDING UNIQUE INSURANCE SOLUTIONS SINCE 1926

Since its founding, Selective has built a reputation for providing unique insurance solutions backed by outstanding customer service. This reputation has recently been rewarded with an “A+” (Superior) Rating from AM Best, with an “A” or better for more than 9 decades.

Today, **Selective Insurance Group, Inc.** is a holding company for 10 property and casualty insurance companies that partner with independent agents to offer standard and specialty insurance for commercial and personal risks. Selective invites its customers to Be Uniquely Insured in partnership with independent agents, who together deliver a best-in-class customer experience.

Headquartered in Branchville, New Jersey since 1926, Selective employs a diverse workforce of more than 2,300 engaged professionals. As the 39th largest U.S. property & casualty group in 2021 (per AM Best), Selective is a super-regional insurance carrier with Commercial Lines in 27 states, Personal Lines in 15 states, Excess & Surplus Lines in 50 states, while being the 4th largest “Write Your Own” insurance carrier in the National Flood Insurance Program.

Selective’s unique position as both a leading insurance group and an employer of choice is recognized in a wide variety of awards and honors, including a listing in the Fortune 1000 and being named one of the Best Workplaces in Financial Services & Insurance™ in 2021 by Great Place to Work® and Forbes.

**SELECTIVE**  
BE UNIQUELY INSURED®

© 2022 Selective Ins. Group, Inc., Branchville, NJ. Products vary by jurisdiction, terms and conditions and are provided by Selective Ins. Co. of America and its insurer affiliates. Details at [selective.com/about/affiliated-insurers.aspx](https://selective.com/about/affiliated-insurers.aspx). SI-22-01

3a.

7-



# Safety Management Starts Here

Here's what we can do for you:



## Fleet Risk Assessment

Quickly uncover ways to protect your drivers and minimize the risk of devastating commercial vehicle losses with an interactive online assessment.



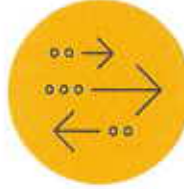
## Online Training from the Experts

Trust the safety advocates at The National Safety Council to provide online distracted driving courses to educate your team on the risks.



## Selective® Drive Fleet Management Tool

Encourage safe driving behaviors and manage fuel expenses with this advanced fleet management tool.



## Digital Services to Support Your Business

We offer a suite of online, self-service resources, including industry-specific safety programs and training to help you make our roadways safer.



## Safe Driving Policies

We can help you implement and educate your team on Permissive Use and Distracted Driving policies to ensure road safety.



Watch how Safety Management makes a difference

Watch Now







# Safety Management Starts Here

Here's what we can do for you:



## Contractual Risk Transfer (CRT)

Help protect your bottom line with CRTs that allocate liability and responsibility to the appropriate party.



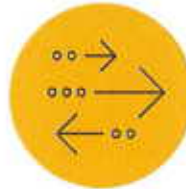
## Slip, Trip, and Fall Assessment

Evaluate the risks of slips, trips, and falls around your property and help prevent injuries with an interactive online assessment.



## Job Site Risks Assessment

Find opportunities to create a safe and compliant job site for you and your team with an interactive online assessment.



## Digital Services to Support Your Business

We offer a suite of online, self-service resources, including industry-specific safety programs and training to help you create a safer environment for all.



## Contractors Completed Operations Assessment

Determine if you've done all you can to prevent property damage or injury after the job is complete with an interactive online assessment.



Watch how Safety Management makes a difference

Watch Now





# Safety Management Starts Here

Here's what we can do for you:



## Ignitable Liquids Assessment

Proactively uncover and address vulnerabilities that may lead to spontaneous combustion in and around your property with an interactive online assessment.



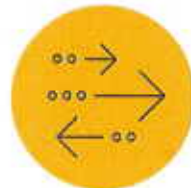
## Free Business Prep Toolkit

Prepare for flooding, wildfires, winter weather, and more with business prep guides developed by the Insurance Institute for Business & Home Safety.



## Water Escape and Intrusion Assessment

Identify potential causes for water escape and intrusion and avoid potentially costly and disruptive interruptions with an interactive online assessment.



## Digital Services to Support Your Business

We offer a suite of online, self-service resources, including industry-specific safety programs and training to help you create a safer property.



## Business Continuity Assessment

Evaluate the strength of your Business Continuity Plan and be ready for unexpected disruptions with an interactive online assessment.



Watch how Safety Management makes a difference

Watch Now



# HERE'S WHAT YOU CAN EXPECT AS A BUSINESS CUSTOMER WITH SELECTIVE.

## PRIOR TO POLICY ISSUED



Top Quality Agent



Safety Management Survey<sup>1</sup>

- Comprehensive Risk Advice
- Help Identify Unknown Risks
- A local team from Selective working in partnership with your agent

## AS A SELECTIVE CUSTOMER



Welcome Email



Digital Policy



Mobile App & Web Portal

- Sign up for **Online Access**
- View Policies, Bills, Auto ID Cards<sup>2</sup>
- Manage Account 24/7



Safety Management Evaluation



Safety Management Service Visit



License Verification with Atlas Certified

- Review Risk Mitigation Efforts
- **Online Tools & Videos**
- Validate Credentials and Increase Compliance



Electronic Billing Alerts



Automatic Payment Options

- Via Email, Text<sup>3</sup>, **Mobile App**<sup>3</sup>
- Checking/Savings Account, Credit/Debit Cards
- Various Flexible Payment Plans
- Pay as You Go<sup>4</sup>



Extended Hours Contact Center



Instant Customer Recognition

- Pay via Phone 24/7
- Communication via Phone, Email, Chat



Selective<sup>®</sup> Drive

- **Selective<sup>®</sup> Drive Mobile App**
- Reduce Distracted/Careless Driving
- Track Driver Locations
- Fleet Route Optimization



Customer Preferences



Proactive Messages



Recall Alerts

- Choice of Communication Channel
- Billing, Claims & Policy Notifications
- Customized Weather Alerts
- Product & Auto Recalls



Accident Claim



Upload Claim Photos with EZ Write



48-Hour Payment with SWIFTClaim<sup>SM</sup>

- Multiple Claim Reporting Options
- Unlimited Photo Upload
- Payment Within Two Days<sup>5</sup>



Proof of Insurance via Mobile App

- Instant Access to Proof of Insurance
- Locate Key Service Providers



Automatic Renewal Options

- Convenient Automatic Renewals
- Multi-Line Product Discount Opportunities

<sup>1</sup> Available for selected Commercial Lines Customers.

<sup>2</sup> Where Allowable by State

<sup>3</sup> Coming in 2019

<sup>4</sup> With PaySync<sup>®</sup> Products

<sup>5</sup> Only for SWIFTClaim<sup>SM</sup>

© 2019 Selective Ins. Group, Inc., Branchville, NJ. Products vary by jurisdiction, terms, and conditions and are provided by Selective Ins. Co. of America and its insurer affiliates. Details at [selective.com/about/affiliated-insurers.aspx](http://selective.com/about/affiliated-insurers.aspx). SI-19-221





Quotation of Commercial Insurance

GENESEE COUNTY INDUSTRIAL DEVELOPMENT AGENCY INC DBA GENESEE COUNTY ECONOMIC DEVELOPMENT CENTER, GENESEE GATEWAY LOCAL DEVELOPMENT CORPORATION, GENESEE VALLEY AGRI-BUSINESS LLC

Quote # 24830600

Policy Period: 01/01/23 to 01/01/24

Table Of Contents

Table with 2 columns: Item Name and Page #. Items include Premium Summary (9), Location Schedule (10), Property (11), Crime Fidelity (12), Inland Marine (13), General Liability (13), Automobile (18), Billing Information (19), Terrorism (Certified Acts) Information (20), Terrorism Exclusion Form (21), and various Appendices (I-VIII).

This non-binding proposal is only a summary of premium. It is not a guarantee that the actual premium will not exceed the amount of the proposal. No coverage is provided by this summary nor does it replace any provisions of the final policy. For specific terms and restrictions, refer to the individual policy and coverage forms.

3a.

12



Quotation of Commercial Insurance

GENESEE COUNTY INDUSTRIAL DEVELOPMENT AGENCY INC DBA GENESEE COUNTY ECONOMIC DEVELOPMENT CENTER,  
GENESEE GATEWAY LOCAL DEVELOPMENT CORPORATION, GENESEE VALLEY AGRI-BUSINESS LLC

Quote # 24830600

Policy Period: 01/01/23 to 01/01/24

**Premium Summary**

<u>Coverage</u>	<u>Premium</u>
Property	\$8,573.45
Crime Fidelity	\$60.00
Inland Marine	\$100.00
General Liability	\$61,893.00
Automobile	\$404.00
<b>Total Premium</b>	<b>\$71,030.45</b>

This non-binding proposal is only a summary of premium. It is not a guarantee that the actual premium will not exceed the amount of the proposal. No coverage is provided by this summary nor does it replace any provisions of the final policy. For specific terms and restrictions, refer to the individual policy and coverage forms.

3a.

13





Quotation of Commercial Insurance

GENESEE COUNTY INDUSTRIAL DEVELOPMENT AGENCY INC DBA GENESEE COUNTY ECONOMIC DEVELOPMENT CENTER,  
GENESEE GATEWAY LOCAL DEVELOPMENT CORPORATION, GENESEE VALLEY AGRI-BUSINESS LLC

Quote # 24830600

Policy Period: 01/01/23 to 01/01/24

**Policy Location Schedule**

<u>Loc#</u>	<u>Bldg#</u>	<u>Street</u>	<u>City</u>	<u>State</u>	<u>Zip</u>
001	001	7856 GRISWOLD ROAD	LE ROY	NY	14482
002	001	PEMBROKE PARK	CORFU	NY	14036
003	001	W/S ALLEGANY ROAD	CORFU	NY	14036
004	001	99 MED TECH DR	BATAVIA	NY	14020
Class Code		0702	Property Interest	Not Available	
Year Built		2010	Stories	2	
Total Area		40642	Protection Class	04	
Sprinklered		Y	Alarm	Not Available	
Construction Type		NON-COMBUSTIBLE			
005	001	EAST MAIN ST RD & ELLICOTT ST RD	BATAVIA	NY	14020
006	001	6608 CROSBY RD	BASOM	NY	14013
007	001	6680 CROSBY RD	BASOM	NY	14013
008	001	6590 CROSBY RD	BASOM	NY	14013
009	001	6561 CROSBY RD	ALABAMA TFPD	NY	14003
010	001	6620 CROSBY RD	BASOM	NY	14013
011	001	6576 CROSBY RD	BASOM	NY	14013
012	001	LAKE ROAD	LEROY	NY	14482
013	001	APPLE TREE ACRES	BERGEN	NY	14416
014	001	CROSBY ROAD WEST SIDE	BASOM	NY	14013
015	001	CROSBY ROAD EAST SIDE	BASOM	NY	14013
016	001	gateway II	BATAVIA	NY	14020
017	001	805 LEWISTON RD	BASOM	NY	14013

This non-binding proposal is only a summary of premium. It is not a guarantee that the actual premium will not exceed the amount of the proposal. No coverage is provided by this summary nor does it replace any provisions of the final policy. For specific terms and restrictions, refer to the individual policy and coverage forms.

3a.

14

Quotation of Commercial Insurance

GENESEE COUNTY INDUSTRIAL DEVELOPMENT AGENCY INC DBA GENESEE COUNTY ECONOMIC DEVELOPMENT CENTER,  
GENESEE GATEWAY LOCAL DEVELOPMENT CORPORATION, GENESEE VALLEY AGRI-BUSINESS LLC

Quote # 24830600

Policy Period: 01/01/23 to 01/01/24

**Property**

Policy Level

Deductible: 2,500  
Coinsurance: Bldg: 100    BPP: 100  
Loss Free Years: 2

Optional Coverages/Extensions

SelectPac Property Extension Endorsement  
**Systems Power Pac Clas Rated Deductibles**  
Combined All Coverages Ded: Follows Property Deductible

Limit

Premium

\$364.00

Location Level

Location 004/001 - 99 MED TECH DR, BATAVIA, NY

<u>Coverage</u>	<u>Limit</u>	<u>Premium</u>
Building	7,703,882	\$5,547.00
Replacement Cost		
Agreed Value		
Business Pers Prop - Business Personal Property	104,193	\$249.00
Replacement Cost		
Business Income with Extra Expense	640,000	\$685.00
Coinsurance 80 %		
Business Income including Rental Value		
waiting period- 72 hours		
Systems Power Pac		\$1,538.00
<b>Location 004/001 - Total Premium</b>		<b>\$8019</b>

Other

NY Fire Tax \$14.45  
Terrorism Premium (Certified Acts) \$176.00

**Total Property Premium \$8,573.45**

This non-binding proposal is only a summary of premium. It is not a guarantee that the actual premium will not exceed the amount of the proposal. No coverage is provided by this summary nor does it replace any provisions of the final policy. For specific terms and restrictions, refer to the individual policy and coverage forms.

3a

15

Quotation of Commercial Insurance

GENESEE COUNTY INDUSTRIAL DEVELOPMENT AGENCY INC DBA GENESEE COUNTY ECONOMIC DEVELOPMENT CENTER,  
GENESEE GATEWAY LOCAL DEVELOPMENT CORPORATION, GENESEE VALLEY AGRI-BUSINESS LLC

Quote # 24830600

Policy Period: 01/01/23 to 01/01/24

**Crime Fidelity**

Policy Level

Coverage Type	Commercial Crime Coverage		
<u>Coverages</u>	<u>Deductible</u>	<u>Limit</u>	<u>Premium</u>
Employee Theft - Per Loss	\$500.00	25,000	Included
Forgery & Alteration	\$500.00	25,000	Included
Computer Fraud	\$500.00	5,000	Included
Crime SelecPac Endorsement			\$60.00

Location Level

Location 004/001 - 99 MED TECH DR, BATAVIA, NY

<u>Coverages</u>	<u>Deductible</u>	<u>Limit</u>	<u>Premium</u>
IP - Theft of Money and Securities	\$500.00	25,000	Included
IP - Robbery or Safe Burg of Other Prop	\$500.00	25,000	Included
Outside the Premises	\$500.00	25,000	Included

**Total Crime Fidelity Premium**

**\$60.00**

This non-binding proposal is only a summary of premium. It is not a guarantee that the actual premium will not exceed the amount of the proposal. No coverage is provided by this summary nor does it replace any provisions of the final policy. For specific terms and restrictions, refer to the individual policy and coverage forms.

3a

16



Quotation of Commercial Insurance

GENESEE COUNTY INDUSTRIAL DEVELOPMENT AGENCY INC DBA GENESEE COUNTY ECONOMIC DEVELOPMENT CENTER,  
GENESEE GATEWAY LOCAL DEVELOPMENT CORPORATION, GENESEE VALLEY AGRI-BUSINESS LLC

Quote # 24830600

Policy Period: 01/01/23 to 01/01/24

**Inland Marine**

Policy Level Coverages

	<u>Limit</u>	<u>Premium</u>
Virus or Harmful Code	50,000	\$0.00

Location Level

Location 004/001 - 99 MED TECH DR, BATAVIA, NY

	<u>Limit</u>	<u>Premium</u>
Electronic Information Systems - Scheduled Equipment - Formula	25,000	\$82.00

Other

<b>Total Inland Marine Premium</b>	<b>\$100.00</b>
------------------------------------	-----------------

**General Liability**

Policy Level

	<u>Limit</u>	<u>Premium</u>
General Aggregate	2,000,000	
Products/Completed Ops	2,000,000	
Each Occurrence	1,000,000	
Personal & Advertising Injury	1,000,000	
Fire Damage	500,000	
Medical Expense	5,000	

Additional Coverages

	<u>Quantity/Limit</u>	<u>Premium</u>
Designated Person/Org CG 2026	2	\$70.00

This non-binding proposal is only a summary of premium. It is not a guarantee that the actual premium will not exceed the amount of the proposal. No coverage is provided by this summary nor does it replace any provisions of the final policy. For specific terms and restrictions, refer to the individual policy and coverage forms.

3a.

17



Quotation of Commercial Insurance

GENESEE COUNTY INDUSTRIAL DEVELOPMENT AGENCY INC DBA GENESEE COUNTY ECONOMIC DEVELOPMENT CENTER,  
GENESEE GATEWAY LOCAL DEVELOPMENT CORPORATION, GENESEE VALLEY AGRI-BUSINESS LLC

Quote # 24830600

Policy Period: 01/01/23 to 01/01/24

Data Compromise		\$333.00
• Aggregate Limit	50,000	
ElitePac General Liability Extension Endorsement		\$1,500.00

**Location Level**

Location 001/001 - 7856 GRISWOLD ROAD, LE ROY, NY  
Class 47051 - REAL ESTATE DEVELOPMENT PROPERTY

<u>Coverage</u>	<u>Exposure</u>	<u>Premium</u>
Premises Operation (Final Rate 17.933)	28	\$502.00

**Location Level**

Location 002/001 - PEMBROKE PARK, CORFU, NY  
Class 47051 - REAL ESTATE DEVELOPMENT PROPERTY

<u>Coverage</u>	<u>Exposure</u>	<u>Premium</u>
Premises Operation (Final Rate 17.933)	36	\$646.00

**Location Level**

Location 003/001 - W/S ALLEGANY ROAD, CORFU, NY  
Class 47051 - REAL ESTATE DEVELOPMENT PROPERTY

<u>Coverage</u>	<u>Exposure</u>	<u>Premium</u>
Premises Operation (Final Rate 17.933)	3	\$54.00

**Location Level**

Location 004/001 - 99 MED TECH DR, BATAVIA, NY  
Class 61212 - BUILDINGS PREM MERC MANF OTHER THA

<u>Coverage</u>	<u>Exposure</u>	<u>Premium</u>
Premises Operation (Final Rate 205.108)	38,900	\$7,979.00

**Location Level**

Location 004/001 - 99 MED TECH DR, BATAVIA, NY  
Class 61227 - BUILDINGS PREMISES NOT FOR PROFIT

<u>Coverage</u>	<u>Exposure</u>	<u>Premium</u>
Premises Operation (Final Rate 685.584)	3,100	\$2,125.00

This non-binding proposal is only a summary of premium. It is not a guarantee that the actual premium will not exceed the amount of the proposal. No coverage is provided by this summary nor does it replace any provisions of the final policy. For specific terms and restrictions, refer to the individual policy and coverage forms.

3a.

18



Quotation of Commercial Insurance

GENESEE COUNTY INDUSTRIAL DEVELOPMENT AGENCY INC DBA GENESEE COUNTY ECONOMIC DEVELOPMENT CENTER,  
GENESEE GATEWAY LOCAL DEVELOPMENT CORPORATION, GENESEE VALLEY AGRI-BUSINESS LLC

Quote # 24830600

Policy Period: 01/01/23 to 01/01/24

**Location Level**

Location 004/001 - 99 MED TECH DR, BATAVIA, NY  
Class 91585 - CONTRACTORS SUB OF BUILDINGS

<u>Coverage</u>	<u>Exposure</u>	<u>Premium</u>
Premises Operation (Final Rate 3.319)	9,050,000	\$30,037.00
Products/Completed Operations (Final Rate 1.572)	9,050,000	\$14,227.00

**Location Level**

Location 005/001 - EAST MAIN ST RD & ELLICOTT ST RD, BATAVIA, NY  
Class 47051 - REAL ESTATE DEVELOPMENT PROPERTY

<u>Coverage</u>	<u>Exposure</u>	<u>Premium</u>
Premises Operation (Final Rate 17.933)	58	\$1,040.00

**Location Level**

Location 006/001 - 6608 CROSBY RD, BASOM, NY  
Class 49452 - VACANT LAND NOT FOR PROFIT ONLY

<u>Coverage</u>	<u>Exposure</u>	<u>Premium</u>
Premises Operation (Final Rate 3.016)	1	\$3.00

**Location Level**

Location 007/001 - 6680 CROSBY RD, BASOM, NY  
Class 49452 - VACANT LAND NOT FOR PROFIT ONLY

<u>Coverage</u>	<u>Exposure</u>	<u>Premium</u>
Premises Operation (Final Rate 3.016)	2	\$6.00

**Location Level**

Location 008/001 - 6590 CROSBY RD, BASOM, NY  
Class 49452 - VACANT LAND NOT FOR PROFIT ONLY

<u>Coverage</u>	<u>Exposure</u>	<u>Premium</u>
Premises Operation (Final Rate 3.016)	1	\$3.00

**Location Level**

This non-binding proposal is only a summary of premium. It is not a guarantee that the actual premium will not exceed the amount of the proposal. No coverage is provided by this summary nor does it replace any provisions of the final policy. For specific terms and restrictions, refer to the individual policy and coverage forms.

Quotation of Commercial Insurance

GENESEE COUNTY INDUSTRIAL DEVELOPMENT AGENCY INC DBA GENESEE COUNTY ECONOMIC DEVELOPMENT CENTER,  
GENESEE GATEWAY LOCAL DEVELOPMENT CORPORATION, GENESEE VALLEY AGRI-BUSINESS LLC

Quote # 24830600

Policy Period: 01/01/23 to 01/01/24

Location 009/001 - 6561 CROSBY RD, ALABAMA TFPD, NY  
Class 49452 - VACANT LAND NOT FOR PROFIT ONLY

<u>Coverage</u>	<u>Exposure</u>	<u>Premium</u>
Premises Operation (Final Rate 3.016)	1	\$3.00

**Location Level**

Location 010/001 - 6620 CROSBY RD, BASOM, NY  
Class 49452 - VACANT LAND NOT FOR PROFIT ONLY

<u>Coverage</u>	<u>Exposure</u>	<u>Premium</u>
Premises Operation (Final Rate 3.016)	1	\$3.00

**Location Level**

Location 011/001 - 6576 CROSBY RD, BASOM, NY  
Class 49452 - VACANT LAND NOT FOR PROFIT ONLY

<u>Coverage</u>	<u>Exposure</u>	<u>Premium</u>
Premises Operation (Final Rate 3.016)	1	\$3.00

**Location Level**

Location 012/001 - LAKE ROAD, LEROY, NY  
Class 49452 - VACANT LAND NOT FOR PROFIT ONLY

<u>Coverage</u>	<u>Exposure</u>	<u>Premium</u>
Premises Operation (Final Rate 2.579)	77	\$199.00

**Location Level**

Location 013/001 - APPLE TREE ACRES, BERGEN, NY  
Class 49452 - VACANT LAND NOT FOR PROFIT ONLY

<u>Coverage</u>	<u>Exposure</u>	<u>Premium</u>
Premises Operation (Final Rate 2.579)	88	\$227.00

**Location Level**

Location 014/001 - CROSBY ROAD WEST SIDE, BASOM, NY  
Class 49452 - VACANT LAND NOT FOR PROFIT ONLY

This non-binding proposal is only a summary of premium. It is not a guarantee that the actual premium will not exceed the amount of the proposal. No coverage is provided by this summary nor does it replace any provisions of the final policy. For specific terms and restrictions, refer to the individual policy and coverage forms.

Quotation of Commercial Insurance

GENESEE COUNTY INDUSTRIAL DEVELOPMENT AGENCY INC DBA GENESEE COUNTY ECONOMIC DEVELOPMENT CENTER,  
GENESEE GATEWAY LOCAL DEVELOPMENT CORPORATION, GENESEE VALLEY AGRI-BUSINESS LLC

Quote # 24830600

Policy Period: 01/01/23 to 01/01/24

<u>Coverage</u>	<u>Exposure</u>	<u>Premium</u>
Premises Operation (Final Rate 2.579)	665	\$1,715.00

**Location Level**

Location 015/001 - CROSBY ROAD EAST SIDE, BASOM, NY  
Class 49452 - VACANT LAND NOT FOR PROFIT ONLY

<u>Coverage</u>	<u>Exposure</u>	<u>Premium</u>
Premises Operation (Final Rate 2.579)	367	\$946.00

**Location Level**

Location 016/001 - gateway II, BATAVIA, NY  
Class 47051 - REAL ESTATE DEVELOPMENT PROPERTY

<u>Coverage</u>	<u>Exposure</u>	<u>Premium</u>
Premises Operation (Final Rate 17.933)	15	\$269.00

**Location Level**

Location 017/001 - 805 LEWISTON RD, BASOM, NY  
Class 49452 - VACANT LAND NOT FOR PROFIT ONLY

<u>Coverage</u>	<u>Exposure</u>	<u>Premium</u>
Premises Operation (Final Rate 3.016)	1	\$3.00

<b>Total General Liability Premium</b>	<b>\$61,893.00</b>
--	--------------------

This non-binding proposal is only a summary of premium. It is not a guarantee that the actual premium will not exceed the amount of the proposal. No coverage is provided by this summary nor does it replace any provisions of the final policy. For specific terms and restrictions, refer to the individual policy and coverage forms.

Quotation of Commercial Insurance

GENESEE COUNTY INDUSTRIAL DEVELOPMENT AGENCY INC DBA GENESEE COUNTY ECONOMIC DEVELOPMENT CENTER,  
GENESEE GATEWAY LOCAL DEVELOPMENT CORPORATION, GENESEE VALLEY AGRI-BUSINESS LLC

Quote # 24830600

Policy Period: 01/01/23 to 01/01/24

**Automobile**

**Policy Level**

	<u>Symbol</u>	<u>Limit</u>	<u>Premium</u>
Liability Limit Type CSL			
- Liability	8,9	1,000,000	
ElitePac Commercial Auto Extension Endorsement			\$25.00

**State Level Coverages (NY)**

<u>Coverage</u>	<u>Symbol</u>	<u>Limit</u>	<u>Premium</u>
Non-Owned Employee Count		0 - 9	\$349.00
Excess Hired		IF ANY	\$30.00

**Total Automobile Premium \$404.00**

This non-binding proposal is only a summary of premium. It is not a guarantee that the actual premium will not exceed the amount of the proposal. No coverage is provided by this summary nor does it replace any provisions of the final policy. For specific terms and restrictions, refer to the individual policy and coverage forms.

Selective understands you have unique insurance needs. Working with your agent, you can select from our various premium installment plans based on eligibility to meet your needs. Your options may include:

- **1-Pay:** Due in full at policy inception
- **2-Pay:** Two equal installments due at policy inception and in the 6th month of the policy term
- **4-Pay:** Four equal installments due at policy inception and in the 3rd, 6th, and 9th months of the policy term
- **Quarterly:** Four equal installments due quarterly starting at policy inception
- **10-Pay:** 19% due at policy inception, with the remaining balance billed in nine equal monthly installments

**Note:** Policies on the same billing account may have different payment plans. Installment fees may apply.

### Manage Your Account Your Way with MySelective

Register for MySelective to start managing your insurance account with unique features like instant certificates of insurance, online claims reporting, paperless policy and billing, and more.

There are two ways to get started:

1. **Online**
  - Visit [Selective.com](https://selective.com)
  - Click Login and then select Customers > Business & Individual Customers
  - Click Create an Account
    - Activate your account using your email, mobile phone, or policy number
2. **Mobile App**
  - Visit the Apple App Store® or the Google Play™ store and search for 'MySelective'
  - Download and open the app
  - Select Create an Account

Activate your account using your email, mobile phone, or policy number

### PaySync® Flexible Payment Program

Get the cash flow flexibility you need with PaySync for your Selective Workers Compensation (WC) and Commercial Package Policy (CPP) – no down payments or special underwriting guidelines apply.

- PaySync for WC – pay your premium installments based on your payroll
- PaySync CPP – choose to have your premiums broken into 12, 24, 26, or 52 payments

You'll need to submit your payroll information to Selective each pay cycle to maintain PaySync WC eligibility. You can also have a third party, such as an accountant or payroll processor, submit your payroll on your behalf.

Visit [selective.com/paysync](https://selective.com/paysync) or contact your agent to discover more PaySync benefits.





Quotation of Commercial Insurance

GENESEE COUNTY INDUSTRIAL DEVELOPMENT AGENCY INC DBA GENESEE COUNTY ECONOMIC DEVELOPMENT CENTER,  
GENESEE GATEWAY LOCAL DEVELOPMENT CORPORATION, GENESEE VALLEY AGRI-BUSINESS LLC

Quote # 24830600

Policy Period: 01/01/23 to 01/01/24

**Terrorism (Certified Acts) Information**

Refer to attached IN 0587 1220 Policyholder Disclosure Notice – Offer of Terrorism Insurance Coverage when Terrorism Insurance Coverage Was Previously Rejected

**TERRORISM COVERAGE AS DESCRIBED ABOVE, HAS BEEN REJECTED. AS A RESULT, THIS POLICY WILL EXCLUDE CERTAIN TERRORISM LOSSES. THE PREMIUM FOR THE TERRORISM (FIRE ONLY) COVERAGE IS \$176.00.**

**TO INCLUDE TERRORISM, YOUR PREMIUM WOULD BE AS FOLLOWS:**

**TERRORISM - CERTIFIED ACTS: \$2,462.00**

**TERRORISM – AUTO \$0.00**

This non-binding proposal is only a summary of premium. It is not a guarantee that the actual premium will not exceed the amount of the proposal. No coverage is provided by this summary nor does it replace any provisions of the final policy. For specific terms and restrictions, refer to the individual policy and coverage forms.

3a.

24

**POLICYHOLDER DISCLOSURE NOTICE  
OFFER OF TERRORISM INSURANCE COVERAGE  
WHEN TERRORISM INSURANCE COVERAGE  
WAS PREVIOUSLY REJECTED**

This policy provides no coverage for losses resulting from "acts of terrorism", as defined in Section 102(1) of the Terrorism Risk Insurance Act, except for fire losses resulting from an "act of terrorism" which we are prohibited by state law from excluding. This is because you have instructed us that you did not want to purchase coverage for such losses and further instructed us not to provide coverage for such losses on any renewal terms. We are providing this offer to you, however, because the Act requires us to annually offer you the opportunity to purchase insurance coverage for losses resulting from "acts of terrorism" certified under the Act.

**Offer of Coverage:**

You are hereby notified that under the Terrorism Risk Insurance Act, as amended, you have a right to purchase insurance coverage for losses resulting from "acts of terrorism", as defined in Section 102(1) of the Act. The term "act of terrorism" means any act that is certified by the Secretary of the Treasury - in consultation with the Secretary of Homeland Security, and the Attorney General of the United States - to be an "act of terrorism"; to be a violent act or an act that is dangerous to human life, property, or infrastructure; to have resulted in damage within the United States, or outside the United States in the case of certain air carriers or vessels or the premises of a United States mission; and to have been committed by an individual or individuals as part of an effort to coerce the civilian population of the United States or to influence the policy or affect the conduct of the United States Government by coercion.

**YOU HAVE PREVIOUSLY REJECTED THIS COVERAGE AND INSTRUCTED US NOT TO PROVIDE IT ON ANY POLICY RENEWALS. THEREFORE, IN ACCORDANCE WITH THE ACT, WE HAVE ATTACHED EXCLUSION(S) ELIMINATING COVERAGE FOR CERTIFIED "ACT OF TERRORISM" LOSSES, EXCEPT FOR FIRE LOSSES RESULTING FROM AN "ACT OF TERRORISM".**

**IF YOU HAVE RECONSIDERED YOUR REJECTION AND WOULD NOW LIKE TO PURCHASE COVERAGE FOR LOSSES RESULTING FROM "ACTS OF TERRORISM" AS DEFINED IN SECTION 102(1) OF THE TERRORISM RISK INSURANCE ACT, PLEASE CONTACT YOUR AGENT FOR ASSISTANCE.**

**Disclosure of Premium:**

The portion of your annual premium for Terrorism (fire only) coverage \_\_\_\_\_ and is due regardless of whether you choose to purchase coverage for certified "acts of terrorism".

We can delete the exclusion(s) for a total annual Terrorism premium charge of \_\_\_\_\_, which includes the premium for Terrorism (fire only) coverage.

This additional premium charge does not include any charges for the portion of loss that may be covered by the federal government under the Act. Please be aware that even if you purchase coverage for losses resulting from certified "acts of terrorism", your policy will still contain other policy terms, conditions, limitations and exclusions that may impact whether coverage is available in the event of a loss resulting from a certified "act of terrorism".

**Federal Participation in Payment of Terrorism Losses:**

You should know that where coverage is provided by this policy for losses resulting from certified "acts of terrorism", such losses may be partially reimbursed by the United States Government under a formula established by federal law. However, under the formula, the United States Government generally reimburses 80% of covered terrorism losses exceeding the statutorily established deductible paid by the insurance company providing the coverage.

**Cap on Insurer Participation in Payment of Terrorism Losses:**

You should also know that the Terrorism Risk Insurance Act, as amended, contains a \$100 billion cap that limits United States Government reimbursement as well as insurers' liability for losses resulting from certified "acts of terrorism" when the amount of such losses in any one calendar year exceeds \$100 billion. If the aggregate insured losses for all insurers exceed \$100 billion, your coverage may be reduced.

**POLICYHOLDER DISCLOSURE NOTICE  
OFFER OF TERRORISM INSURANCE COVERAGE  
WHEN TERRORISM INSURANCE COVERAGE  
WAS PREVIOUSLY REJECTED**

This policy provides no coverage for losses resulting from "acts of terrorism", as defined in Section 102(1) of the Terrorism Risk Insurance Act, except for fire losses resulting from an "act of terrorism" which we are prohibited by state law from excluding. This is because you have instructed us that you did not want to purchase coverage for such losses and further instructed us not to provide coverage for such losses on any renewal terms. We are providing this offer to you, however, because the Act requires us to annually offer you the opportunity to purchase insurance coverage for losses resulting from "acts of terrorism" certified under the Act.

**Offer of Coverage:**

You are hereby notified that under the Terrorism Risk Insurance Act, as amended, you have a right to purchase insurance coverage for losses resulting from "acts of terrorism", as defined in Section 102(1) of the Act. The term "act of terrorism" means any act that is certified by the Secretary of the Treasury - in consultation with the Secretary of Homeland Security, and the Attorney General of the United States - to be an "act of terrorism"; to be a violent act or an act that is dangerous to human life, property, or infrastructure; to have resulted in damage within the United States, or outside the United States in the case of certain air carriers or vessels or the premises of a United States mission; and to have been committed by an individual or individuals as part of an effort to coerce the civilian population of the United States or to influence the policy or affect the conduct of the United States Government by coercion.

**YOU HAVE PREVIOUSLY REJECTED THIS COVERAGE AND INSTRUCTED US NOT TO PROVIDE IT ON ANY POLICY RENEWALS. THEREFORE, IN ACCORDANCE WITH THE ACT, WE HAVE ATTACHED EXCLUSION(S) ELIMINATING COVERAGE FOR CERTIFIED "ACT OF TERRORISM" LOSSES, EXCEPT FOR FIRE LOSSES RESULTING FROM AN "ACT OF TERRORISM".**

**IF YOU HAVE RECONSIDERED YOUR REJECTION AND WOULD NOW LIKE TO PURCHASE COVERAGE FOR LOSSES RESULTING FROM "ACTS OF TERRORISM" AS DEFINED IN SECTION 102(1) OF THE TERRORISM RISK INSURANCE ACT, PLEASE CONTACT YOUR AGENT FOR ASSISTANCE.**

**Disclosure of Premium:**

The portion of your annual premium for Terrorism (fire only) coverage \_\_\_\_\_ and is due regardless of whether you choose to purchase coverage for certified "acts of terrorism".

We can delete the exclusion(s) for a total annual Terrorism premium charge of \_\_\_\_\_, which includes the premium for Terrorism (fire only) coverage.

This additional premium charge does not include any charges for the portion of loss that may be covered by the federal government under the Act. Please be aware that even if you purchase coverage for losses resulting from certified "acts of terrorism", your policy will still contain other policy terms, conditions, limitations and exclusions that may impact whether coverage is available in the event of a loss resulting from a certified "act of terrorism".

3a.

27

**Federal Participation in Payment of Terrorism Losses:**

You should know that where coverage is provided by this policy for losses resulting from certified "acts of terrorism", such losses may be partially reimbursed by the United States Government under a formula established by federal law. However, under the formula, the United States Government generally reimburses 80% of covered terrorism losses exceeding the statutorily established deductible paid by the insurance company providing the coverage.

**Cap on Insurer Participation in Payment of Terrorism Losses:**

You should also know that the Terrorism Risk Insurance Act, as amended, contains a \$100 billion cap that limits United States Government reimbursement as well as insurers' liability for losses resulting from certified "acts of terrorism" when the amount of such losses in any one calendar year exceeds \$100 billion. If the aggregate insured losses for all insurers exceed \$100 billion, your coverage may be reduced.

3a.

28



# PRAESIDIUM

## WHAT YOU DON'T KNOW CAN HURT THOSE IN YOUR CARE AND YOUR ORGANIZATION.

Adopting a solid screening and selection process is your first line of defense in creating a safe environment. A thorough, consistent screening process may also discourage would-be offenders from targeting your organization. Failure to discover a known offender can affect those in your care and the organization's reputation, financial stability, and trust within the community. Who you should screen can depend on many factors, such as if the person is a new full-time hire, a season hire, or even a current employee. In determining the types of checks to utilize, organizations should follow all state, federal, and licensing regulations and consider an individual's level of access. Level of access may be influenced by:

## WHO IS PRAESIDIUM?

Praesidium is the national leader in abuse risk management. With more than two decades of experience, and serving thousands of clients, our dedicated team of researchers, psychologists, attorneys, social workers, and human resource professionals have analyzed thousands of cases of abuse in organizations and synthesized the latest scientific research. We know how abuse happens in organizations . . . and how to prevent it.

- **Frequency:** How frequently does the individual work around or interact with consumers? Is it a one-time event or every day?
- **Duration:** What is the duration of the individual's interactions? Is it a one-time, one-hour event or an entire summer?
- **Level of Supervision:** Are the individual's interactions always supervised by another adult or are they one-on-one with consumers?
- **Nature of the Relationship:** What is the nature of the relationship between the individual and the consumers in the program? Does the individual merely supervise an area during an event that has consumers, or are they getting to know individual consumers and families while counseling, tutoring, or providing personal care services?

**Selective Insurance has partnered with Praesidium to offer you discounted background screening services for your organization.**

For more information go to: [selective.com/praesidium](http://selective.com/praesidium) - (800.743.6354) - [selective@praesidiuminc.com](mailto:selective@praesidiuminc.com)  
In order to receive this exclusive benefit please identify yourself as a Selective Insurance agent or insured.

**FOUR ELEMENTS FOR A THOROUGH BUT COST EFFECTIVE BACKGROUND CHECK:**

- **Check Facts:** Aliases, DOBs, and address history all drive research and help to paint a complete picture.
- **Search Wide:** Multi State criminal and national sex offender databases will identify the unexpected.
- **Search Deep:** Targeted county level searches will give real-time information where records are most likely to be found.
- **Ask Questions:** References can provide insights on behavior and clues to non-criminal boundary issues.

**WHO SHOULD YOU SCREEN, AND HOW OFTEN?**

- **New Hires/Volunteers:** A thorough, consistently applied background screening process at the time of hire is your first and best opportunity to identify the problem.
- **Seasonal Hires/Volunteers:** Seasonal staff present a unique risk because you don't see them for months at a time, but it's often not practical to complete a full new hire process each season. An annual check-in plan is key.
- **Re-Screening:** Conducting targeted checks on your full-time employees at least every 3 years helps you identify issues before they impact your organization.

**BACKGROUND SCREENING FOR SELECTIVE INSURED**

Praesidium offers a selection of background screening packages plus a la carte services to empower your organization to conduct right-sized research. Praesidium's team can help contextualize the screening process as part of an overall culture of safety and discuss how screening works in hand with other abuse prevention efforts. Praesidium's team can also help you understand who to screen, how often, and the importance of re-screening.

	LOW ACCESS VOLUNTEERS	HIGH ACCESS VOLUNTEERS	EMPLOYEES	FINANCIAL ACCESS	A LA CARTE
	STARTING AT \$16	STARTING AT \$16	STARTING AT \$16	STARTING AT \$37	INDIVIDUAL COST PER SERVICE
Employment Credit (\$60 one-time set up fee required)				X	\$10.00
Confidence Multi State Criminal and Sex Offender Database w/Alias**	X	X	X	X	\$ 9.00
7 Yr County Criminal Records Search: Current County of Residence*	X	X	X	X	\$ 7.00
Add'l Counties Added As Needed Based on 7 yr Address History*		X	X	X	\$ 5.50
County Civil Records Search (upper): 1 County*				X	\$11.00
Motor Vehicle Records Search*					\$ 5.00
Employment Verification: 1 Position*					\$ 8.00
Education Verification: 1 Degree*					\$ 7.00
Personal Reference: 1 Reference					\$11.00
Professional Reference: 1 Reference					\$12.00
International Criminal Search 1 Jurisdiction*					\$50.00

\* 3rd Party keeper fees may apply and will be passed on at cost when incurred.

\*\* Criminal records found in the Multi State database check are subject to verification at the source and additional costs may apply.

For more information go to: [selective.com/praesidium](http://selective.com/praesidium) - (800.743.6354) - [selective@praesidiuminc.com](mailto:selective@praesidiuminc.com)

In order to receive this exclusive benefit please identify yourself as a Selective Insurance agent or insured.

3a.

30

**PRAESIDIUM**

**PREVENTING ABUSE TOGETHER**

**PRAESIDIUM'S MISSION:**

**TO HELP YOU PROTECT THOSE IN YOUR CARE FROM ABUSE AND TO HELP PRESERVE TRUST IN YOUR ORGANIZATION.**

An incident of abuse can be detrimental to an organization. That's why Selective Insurance has partnered with Praesidium to provide policy holders access to targeted solutions to help your organization strengthen its abuse prevention efforts.

**Selective insureds can access (at no additional cost):**

Praesidium Model Policies, Screening and Selection Toolkit, and Praesidium Academy online training. Insureds can also take advantage of discounted Background Screening services.

**PRAESIDIUM'S SCIENTIFIC METHODOLOGY**

Using current research and root cause analysis, Praesidium developed its own abuse risk management model, The Praesidium Safety Equation® Root-cause analysis of several thousand incidents of abuse across industries demonstrated that risks fell into eight organizational operations: Policies, Screening and Selection, Training, Monitoring and Supervision, Internal Feedback Systems, Consumer Participation, Responding, and Administrative Practices. By implementing best practices in each of these operations, Praesidium determined that risks could be reduced or eliminated.

**WHO IS PRAESIDIUM?**

Praesidium is a mission driven risk management firm that helps organizations reduce the risk of sexual abuse as well as the risk of false allegations. With over 25 years of experience and serving thousands of clients in the United States and 11 other countries, our dedicated team of researchers, psychologists, attorneys, social workers, and human resource professionals have analyzed thousands of cases of abuse in organizations and synthesized the latest scientific research.

We know how abuse happens in organizations and more importantly, how to prevent it.

Policies +	Screening & Selection	+ Training
Monitoring & Supervision +	Internal Feedback Systems	Consumer + Participation
Responding +	Administrative Practices	= A SAFE ENVIRONMENT

For more information go to: [selective.com/praesidium](http://selective.com/praesidium) — 800.743.6354 — [selective@praesidiuminc.com](mailto:selective@praesidiuminc.com)  
In order to receive this exclusive benefit please identify yourself as a Selective Insurance agent or insured.

3a.

31

# PRAESIDIUM

---

## FEATURED SERVICES

---

### Products and services offered to Selective Insureds:

- **MODEL POLICIES**

Clear policies set the stage for safe environments by defining acceptable and unacceptable employee and volunteer conduct. Policies also facilitate effective monitoring and supervision by helping others to recognize and take action when they see policy violations. Praesidium can provide model policies, review and revise existing policies, or help your organization draft policies that address the protection of your consumers.

- **SCREENING AND SELECTION TOOLKIT**

The most comprehensive package of its kind, Praesidium's Screening and Selection Tool Kit comes complete with everything your organization needs to effectively screen employees and caregivers, including more than 80 "red flag" indicators for identifying high-risk applicants and hundreds of examples of high- and low-risk applicant responses.

- **PRAESIDIUM ACADEMY LEARN TO PROTECT SYSTEM**

Praesidium Academy overcomes the limitations of traditional online training by including, an Action Plan to help learners apply what they're learning, a Discussion Guide to be used in a group setting, and a Coaching Playbook for supervisors, with each course. Your staff and volunteers get just the right training — at just the right time! And our on-site instructor-led and train-the-trainer training is perfect for large groups or specialized content.

- **DISCOUNTED BACKGROUND SCREENING**

Adopting a solid screening and selection process is your first line of defense in creating a safe environment. A thorough, consistent screening process may also discourage would-be offenders from targeting your organization. Failure to discover a known offender can affect those in your care and your organization's reputation, financial stability and trust within the community. Praesidium offers several standard and customizable criminal background screening packages plus other a la carte background screening services.

Sign up for our

complimentary tip of the month emails by going to:

<http://bit.ly/2MQeLqg>

For more information go to: [selective.com/praesidium](http://selective.com/praesidium) — 800.743.6354 — [selective@praesidiuminc.com](mailto:selective@praesidiuminc.com)  
In order to receive this exclusive benefit please identify yourself as a Selective Insurance agent or insured.

3a.

32



**PRAESIDIUM**

**PROTECTING VULNERABLE POPULATIONS WITH TRAINING**

**PRAESIDIUM'S ACADEMY  
LEARN TO PROTECT SYSTEM**

The Praesidium Academy Learn to Protect System is far more than a check-the-box collection of e-learning courses. Instead, it is a comprehensive system based on learning theory and best practices in adult learning. It helps build and sustain a culture of safety in your organization, and it helps meet the training requirements included in Praesidium's Safety Equation®, a scientifically-based framework for preventing abuse in organizations.

At the core of the Praesidium Academy Learn to Protect System is a continually expanding library of engaging courses, each with clearly defined outcomes. In fact, volunteers, employees, and executives from a diverse range of organizations have completed more than one million Praesidium Academy courses! Courses include research-based content, highly interactive multimedia activities, application scenarios, and a content mastery quiz.

The Praesidium Academy Learn to Protect System includes supporting tools that enhance both the short and long term effectiveness of the training experience and produce sustainable changes in employee and volunteer behavior.

Praesidium Academy can also be streamlined with our background screening services to provide a one-stop solution for both training and your screening prevention efforts. These screening services are available at a discount to Selective Insureds.

**COMPLIMENTARY  
PRAESIDIUM ACADEMY  
ACCESS FOR  
SELECTIVE INSURED**

Selective Insurance has partnered with Praesidium to provide policyholders access to targeted solutions to help your organization strengthen its abuse prevention efforts.

Selective insureds can access (at no additional cost) Praesidium's Model Policies, the Praesidium Screening and Selection Toolkit, and online training. Insureds can also take advantage of discounted Background Screening.

Visit [selective.com/praesidium](http://selective.com/praesidium) to access your complimentary Praesidium resources.

<p>Action Plans are printed and used with the online course. Action Plans summarize the key learning points and prompt learners to take notes throughout the course. They provide a great reference after the course.</p>	<p>Coaching Playbooks provide supervisors a high-level summary of the course, including learning objectives and key learning points. The Coaching Playbooks give supervisors practical steps they can take to reinforce the learning.</p>	<p>Discussion Guides are developed for small group and classroom discussions. A facilitator is able to reinforce important content and remind learners of what they learned in the online course.</p>
---	---	---

For more information go to: [selective.com/praesidium](http://selective.com/praesidium) — 800.743.6354 — [selective@praesidiuminc.com](mailto:selective@praesidiuminc.com) In order to receive this **EXCLUSIVE** benefit please identify yourself as a Selective Insurance agent or insured.



## SelectPac Property Extension

The following forms are included:

- CP 7628 SelectPac Property Extension Endorsement
- CP 7629 SelectPac Schedule (lists the coverages & limits in the above endorsement)

Coverage	Limit
Additional Property Covered:	
The cost of excavations, grading, backfilling or filling	Included in Bldg Limit
Foundations of buildings, structures, machinery or boilers	Included in Bldg Limit
Personal property while airborne or waterborne	Included in BPP Limit
Underground pipes, flues or drains	Included in Bldg Limit
Arson, Theft and Vandalism Rewards (not applicable in New York)	\$5,000
Back Up Of Sewer, Drain Or Sump - Direct Damage	\$50,000
Brands and Labels	Included in BPP Limit
Business Income/Extra Expense Related Additional Coverages (applicable if BI written):	
Back Up Of Sewer, Drain Or Sump - Business Income	\$50,000
Dependent Properties	\$50,000
Extended Period of Indemnity	180 Days
Extra Expense (applies if no Business Income - ALS coverage)	\$25,000
Newly Acquired Locations - Business Income	\$50,000
Utility Services - Time Element	\$25,000
Business Personal Property Seasonal Increase	10%
Change of Temperature and Humidity	Included
Claim Expenses	\$10,000
Consequential Loss to Stock	Included in Valuation
Deductible (waiver of multiple property deductibles)	Included
Deferred Payments	\$5,000
Fire Department Service Charge	\$5,000
Fire Extinguishing Equipment	\$10,000
Inland Marine Related Coverages:	
Accounts Receivable	\$25,000
Electronic Information Systems (aka Computer Equipment and Electronic Data)	\$25,000

## SelectPac Property Extension

Coverage	Limit
Fine Arts	\$10,000
Installation Property	\$25,000
Mobile Equipment	\$10,000
Personal Effects - Within the Coverage Territory	\$5,000 Per Person / \$25,000 Occurrence
Property in Transit - Within the Coverage Territory	\$25,000
Salesperson's Samples - Within the Coverage Territory	\$10,000
Tools and Equipment	\$10,000
Valuable Papers and Records	\$25,000
Lock Replacement	\$1,000
Marring and Scratching	Included
Newly Acquired or Constructed Property - Building Per Location	\$500,000
Newly Acquired or Constructed Property - Business Personal Property Per Location	\$250,000
Non-Owned Detached Trailers	\$5,000
Ordinance or Law Coverage:	
Coverage A - Undamaged Parts of a Building	Included in Bldg Limit
Coverage B - Demolition Cost	\$50,000
Coverage C - Increased Cost of Construction	\$50,000
Coverage D - Tenants' Improvements and Betterments	\$10,000
Outdoor Property	\$50,000
Outdoor Trees, Shrubs and Plants (\$2,500 any one item)	\$10,000
Personal Property At Unnamed Premises - Within the Coverage Territory	\$25,000
Personal Property of Others	Included in BPP Limit
Pollutant Clean-up and Removal	\$25,000
Premises Boundary Increased Distance	1,000 Feet
Replacement Cost Valuation for Personal Property of Others	Included
Selling Price Valuation	Included
Spoilage (formerly Refrigerated Property)	\$5,000
Tenant's Building Glass Liability	Included in BPP Limit
Theft Damage to Building	Included in BPP Limit

## SelectPac Property Extension

Coverage	Limit
Theft Limitation Amendments	
Patterns, Dies, Molds and Forms	Included in BPP Limit
Utility Service - Direct Damage	\$25,000
Voluntary Parting by Trick, Scheme or Device	Included

Confidential, unpublished property of Selective Insurance Company of America. Use and distribution limited solely to authorized personnel and appointed agents. Do not duplicate or distribute.

©2019 Selective Ins. Group, Inc., Branchville, NJ. Products vary by jurisdiction, terms, and conditions and are provided by Selective Ins. Co. of America and its insurer affiliates. Details at [selective.com/about/affiliated-insurers.aspx](http://selective.com/about/affiliated-insurers.aspx).

## Crime SelectPac Endorsement

Coverage	Limit
Crime SelectPac Endorsement CR 7914 [1]	
Employee Theft	\$25,000
Forgery Or Alteration	\$25,000
Inside The Premises – Theft of Money and Securities	\$25,000
Inside The Premises – Robbery Or Safe Burglary of Other Property	\$25,000
Outside The Premises	\$25,000
Computer Fraud	\$5,000

[1] When the SelectPac Property Extension Endorsement is purchased, the Crime SelectPac Endorsement is available under the Crime Coverage Part. The Crime SelectPac is not available if the SelectPac Property Extension Endorsement is not purchased.

Confidential, unpublished property of Selective Insurance Company of America. Use and distribution limited solely to authorized personnel and appointed agents. Do not duplicate or distribute.

©2019 Selective Ins. Group, Inc., Branchville, NJ. Products vary by jurisdiction, terms, and conditions and are provided by Selective Ins. Co. of America and its insurer affiliates. Details at [selective.com/about/affiliated-insurers.aspx](http://selective.com/about/affiliated-insurers.aspx).

3a.

37

## ElitePac® General Liability Extension Endorsement

The following forms/coverages are included:

- CG 73 00 (or CG 73 00NY, CG 73 00FL) ElitePac® General Liability Extension Endorsement
- CG 79 35 (or CG 79 35NY, CG 79 35FL) Product Recall Expense Coverage Endorsement - \$25,000 Limit
- \$15,000 Increased Limit for Medical Payments (N/A for the following Market Segments: Auto Services, Emergency Services, Governmental, Hotels, Resorts and Restaurants)

Coverage	Limit
Additional Insured – Primary and Non-Contributory Provision	Included
Blanket Additional Insureds – As Required By Contract	Included
Broad Form Vendors Coverage	Included
Damage To Premises Rented To You (Including Fire, Lightning or Explosion)	\$500,000 (Limit to be shown on Dec Page)
Electronic Data Liability	\$100,000
Employee Definition Amended	Included
Employees As Insureds Modified	Included
Employer's Liability Exclusion Amended (N/A in NY)	Included
Incidental Malpractice Exclusion Modified (N/A for Social Service and Senior Living Market Segments)	Included
Knowledge of Occurrence, Claim, Suit or Loss	Included
Liberalization Clause	Included
Medical Payments Amendments	Included
Any Insured Amendment	Included
Products Amendment	Included
Mental Anguish Amendment (N/A in NY)	Included
Newly Formed or Acquired Organizations	Included
Non-Accumulation of Limits (N/A in NY or WI)	Included
Non-Owned Aircraft	Included
Non-Owned Watercraft (under 60 feet)	Included
Not-For-Profit Organization Members as Additional Insureds	Included
Personal and Advertising Injury – Discrimination Amendment (N/A in NY)	Included



## ElitePac® General Liability Extension Endorsement

Coverage	Limit
Supplementary Payments Amended	Included
Bail Bonds	\$5,000
Loss of Earnings	\$1,000
Unintentional Failure To Disclose Hazards	Included
Waiver of Transfer of Rights of Recovery (subrogation)	Included

Confidential, unpublished property of Selective Insurance Company of America. Use and distribution limited solely to authorized personnel and appointed agents. Do not duplicate or distribute.

©2019 Selective Ins. Group, Inc., Branchville, NJ. Products vary by jurisdiction, terms, and conditions and are provided by Selective Ins. Co. of America and its insurer affiliates. Details at [selective.com/about/affiliated-insurers.aspx](http://selective.com/about/affiliated-insurers.aspx).

## ElitePac® Commercial Auto Extension Endorsement

The following forms are included:

- CA 7809NY ElitePac® Commercial Automobile Extension
- CA 7816NY Schedule ElitePac® Commercial Automobile Extension

Coverage	Limit
<b>Amendments To Section II – Liability Coverage</b>	
Newly Acquired Or Formed Organizations – qualify as named insured if majority owned with no similar insurance available	Included
Limited Liability Companies – members and managers are insureds while using an auto not owned or hired by named insured	Included
Employees As Insureds – while using an auto not owned or hired by named insured in named insured’s business	Included
Blanket Additional Insureds	Included
Expenses For Bail Bonds And Loss Of Earnings	
Bail Bonds	\$3,000 Per “Accident”
Loss Of Earnings	\$1,000 Per Day
Employee Indemnification and Employer’s Liability Amendment – exclusion does not apply to volunteer workers not entitled to Workers Compensation coverage	Included
Fellow Employee Coverage – the exclusion is deleted	Included
Care, Custody Or Control Amendment – exclusion does not apply to property owned by anyone other than an insured	\$1,000 limit Per “Accident”; \$500 Deductible Per “Accident”
<b>Amendments To Section III – Physical Damage Coverage</b>	
Towing And Labor	
Private Passenger Auto, Social Service Van or Bus, Light Truck Medium, Heavy and Extra Heavy Trucks	\$75 Per Tow \$150 Per Tow
Glass Breakage Deductible – waived when glass is repaired	Included
Additional Transportation Expenses	\$60 Per Day up to a maximum of \$1,800
Hired Auto Physical Damage Coverage	\$75,000 Per “Loss”
Hired Auto Loss of Use Coverage – for expenses named insured is legally responsible to pay for loss of use of covered auto	\$750 Per “Accident”

3a.

40

## ElitePac® Commercial Auto Extension Endorsement

Coverage	Limit
<b>Amendments To Section III – Physical Damage Coverage, Continued</b>	
Auto Loan/Lease Gap Coverage (N/A in New York)	Unpaid amount due on lease or loan, with exceptions
Personal Effects Coverage – for covered personal items in a covered auto at time of theft, no deductible applies	\$500 Per "Accident"
Airbag Coverage	Included
Expanded Audio, Visual and Data Electronic Equipment Coverage - \$50 deductible applies	Included
Comprehensive Deductible – Location Tracking Device – maximum \$50 applies if tracking device aided in recovery of the auto	Included
Physical Damage Limit Of Insurance – removes restriction related to betterment and sublimit of \$1,000 for electronic equipment	Included
<b>Amendments To Section IV – Business Auto Conditions</b>	
Duties In Event of Accident, Claim, Suit or Loss – this condition does not apply unless certain persons have knowledge of the accident, claim, suit or loss	Included
Waiver of Subrogation – blanket waiver when liability has been assumed under an insured contract	Included
Multiple Deductibles – if two or more covered autos involved in loss, only highest deductible applies	Included
Concealment, Misrepresentation or Fraud – coverage not denied if named insured unintentionally fails to disclose existing hazard	Included
Policy Period, Coverage Territory – covers any type of covered auto hired without a driver for 30 days or less anywhere in the world	Included
Two or More Coverage Forms or Policies Issued By Us – Deductibles - only the highest applicable deductible will apply subject to a minimum deductible of \$50, a minimum \$100 Collision deductible applies to private passenger autos.	Included
<b>Amendments To Section V – Definitions</b>	
Bodily Injury Including Mental Anguish (N/A in New York)	Definition

Confidential, unpublished property of Selective Insurance Company of America. Use and distribution limited solely to authorized personnel and appointed agents. Do not duplicate or distribute.

©2019 Selective Ins. Group, Inc., Branchville, NJ. Products vary by jurisdiction, terms, and conditions and are provided by Selective Ins. Co. of America and its insurer affiliates. Details at [selective.com/about/affiliated-insurers.aspx](http://selective.com/about/affiliated-insurers.aspx).

3a.

41